

Dragon Steel Products was established with the goal of providing our international customers with the highest level of professional service and quality merchandise at competitive prices. We are recognized and respected around the world for our ability to source the most ordinary and the most unusual products.

Our extensive contacts with a diverse range of Asian manufacturers enable us to ensure export to world-wide markets with attention to major international specifications.

We maintain offices in New York, Qingdao and Shanghai, China, providing around-the-clock response and service to our customers.

Product Specialization:

Steel forgings and castings, wire rope, cable and related accessories. Other products include valves, pipe fittings, wire mesh, agricultural implements, material handling equipment and cargo tie-down components. All industries and markets are accessible through our extensive contacts.

Technology:

Continually updated databases and extensive travel throughout Asia keep us in contact with the most innovative manufacturers, enabling us to offer an ever expanding range of products to meet our customer's needs. Our offices are electronically linked, around the clock and around the world, providing you with responsive customer service.

Quality:

We place the highest emphasis on quality control and inspect all orders prior to shipment. Our strategic locations near the Southern ports of Shanghai and Northern ports of Qingdao enable us to consolidate products from several manufacturers in the same shipment, ensuring that you receive the optimum product mix via the most direct route.

Products liability insurance:

Dragon Steel Products is insured by a reputable carrier. Certificates of insurance can be provided upon request.

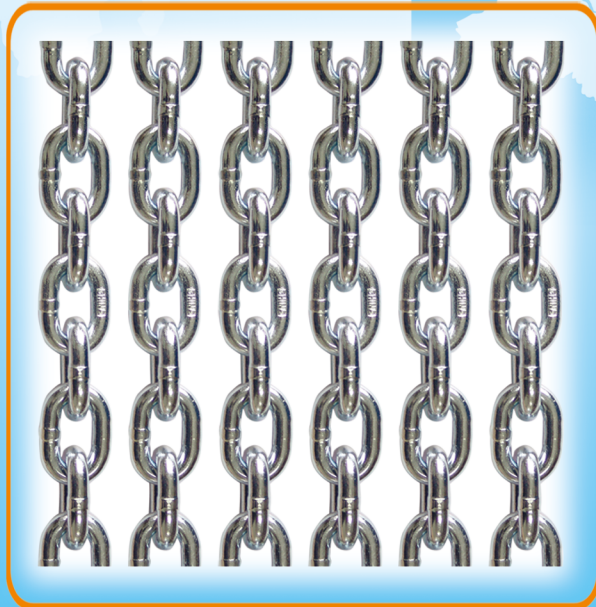
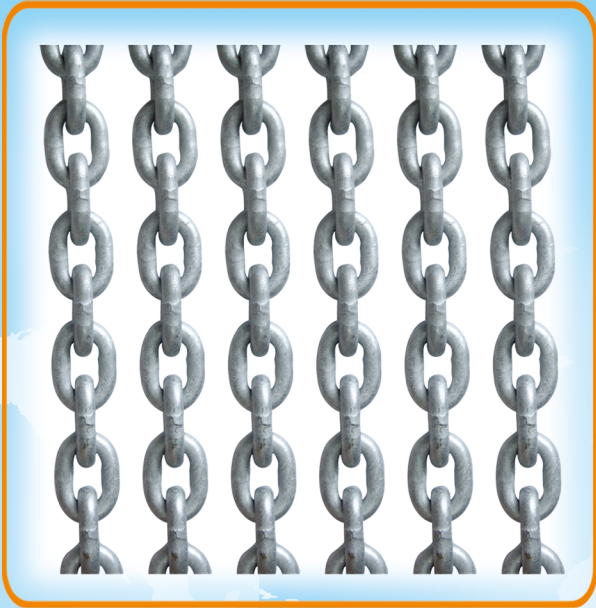
Dragon Steel Products's goal is to cultivate long term business relationships with our clients, and we place the highest priority on hands-on account and product management with your organization. Our success is a mirror of our customer's satisfaction, and we are confident our attention to detail will surpass your experience dealing with other firms.

Dragon Steel Products welcomes your enquiry and looks forward to assisting you with all your import needs. Please contact us for more information and personalized attention.

PRODUCTS INDEX

STEEL WIRE ROPE	1 - 20
PC STRANDS	21
CABLE TIE-OUTS	22 - 23
CHAIN	24 - 40
ANCHOR CHAIN	41 - 43
HOOKS	44 - 55
LINKS	56 - 62
LOAD BINDERS	63
TURNBUCKLES	64 - 67
EYE BOLTS	68 - 71
SHACKLES	72 - 75
WIRE ROPE CLIPS	76 - 77
THIMBLES	78 - 81
SNAP HOOKS	82 - 83
SLEEVES	84
SMALL ANCHORS	85 - 86
RATCHET BUCKLES	87 - 88
METAL HOOKS	89 - 91
CAM BUCKLES	92
WINCHES	93
WEBBING SLINGS	94
RATCHET STRAPS	95
PULLEYS AND BLOCKS	96 - 102
CHAIN BLOCKS	103 - 104
LEVER BLOCKS	105 - 106
CLAMPS	107 - 109
CUTTING, BENDING*SWAGING TOOLS	110 - 112
TROLLEYS	113
PALLET TRUCKS	114
WIRE ROPE WINCHES	115

CHAIN CHAIN ASSEMBLIES



U.S.A. ASTM STANDARD LINK CHAIN

PROOF COIL CHAIN ASTM80 (G30)



Nominal Size	Material Diameter		Inside Length (max.)		Inside Width (min.)		Working Load Limit (max.)		Proof Test (min.)		Min Breaking (Load)		Unit Weight Per 100'	
	in	mm	in	mm	in	mm	kg	lb	kn	lb	kn	lb	kg	lb
3/16	5.5	0.217	24.8	0.98	10.5	0.41	360	800	7.1	1,600	14.2	3,200	18.1	40
1/4	7.0	0.276	25.4	1.00	12.0	0.47	590	1,300	11.6	2,600	23.1	5,200	31.3	69
5/16	8.7	0.343	27.0	1.06	12.7	0.50	910	2,000	17.8	4,000	35.6	8,000	51.0	112
3/8	10.0	0.394	32.0	1.26	14.5	0.57	1,200	2,650	23.6	5,300	47.1	10,600	65.7	145
7/16	12.0	0.472	36.0	1.42	16.0	0.63	1,680	3,700	32.9	7,400	65.8	14,800	96	211
1/2	13.0	0.512	39.0	1.54	19.0	0.75	2,040	4,500	40.0	9,000	80.0	18,000	114	251
5/8	16.7	0.657	48.5	1.91	25.2	0.99	3,360	7,400	65.8	14,800	131.6	29,600	189	416
3/4	19.8	0.780	56.0	2.20	26.4	1.04	4,720	10,400	92.5	20,800	184.9	41,600	263	579

HIGH TEST CHAIN ASTM80 (G43)



Nominal Size	Material Diameter		Inside Length (max.)		Inside Width (min.)		Working Load Limit(max.)		Proof Test (min.)		Min Breaking Load		Unit Weight Per 100'	
	in	mm	in	mm	in	mm	kg	lb	kn	lb	kn	lb	kg	lb
1/4	7.0	0.276	25.4	1.00	12.0	0.47	1,180	2,600	19.1	4,300	34.7	7,800	31.3	69
5/16	8.7	0.343	27.0	1.06	12.7	0.50	1,770	3,900	28.4	6,400	51.6	11,600	51.0	112
3/8	10.0	0.394	30.0	1.18	14.5	0.57	2,450	5,400	39.6	8,900	72.0	16,200	67.6	149
7/16	12.0	0.472	36.0	1.42	16.0	0.63	3,270	7,200	52.9	11,900	96.0	21,600	96	211
1/2	13.0	0.512	39.0	1.54	19.0	0.75	4,180	9,200	68.0	15,300	122.7	27,600	114	251

TRANSPORT CHAIN ASTM80 (G70)



Nominal Size	Material Diameter		Inside Length (max.)		Inside Width (min.)		Working Load Limit (max.)		Proof Test (min.)		Min Breaking Load		Unit Weight Per 100'	
	in	mm	in	mm	in	mm	kg	lb	kn	lb	kn	lb	kg	lb
1/4	7.0	0.276	22.0	0.87	10.0	0.39	1,430	3,150	28.0	6,300	56.0	12,600	32.9	72
5/16	8.7	0.343	27.0	1.06	12.0	0.47	2,130	4,700	41.8	9,400	83.6	18,800	51.0	112
3/8	10.0	0.394	30.0	1.18	14.5	0.57	2,990	6,600	58.7	13,200	117.3	26,400	67.6	149
1/2	13.0	0.512	39.0	1.54	19.0	0.75	5,130	11,300	100.5	22,600	200.9	45,200	114	251

New York
Tel: 1-212-717-1496
Fax: 1-212-717-1499

<http://dragonsteelproducts.com>

E-mail: sales@dragonsteelproducts.com

Qingdao

Tel: 86-532-81970686

Fax: 86-532-81970685

E-mail: qingdao@dragonsteelproducts.com

Shanghai

Tel: 86-21-54810680

Fax: 86-21-54810003

E-mail: sho@dragonwire.com



U.S.A. NACM90 STANDARD LINK CHAIN

PROOF COIL CHAIN NACM90 (G30)



Nominal Size	Material Diameter		Inside Length (max.)		Inside Width (min.)		Working Load Limit (max.)		Proof Test (min.)		Min Breaking Load		Unit Weight Per 100'	
	in	mm	in	mm	in	mm	kg	lb	kn	lb	kn	lb	kg	lb
1/8	4.0	0.157	23.9	0.94	6.4	0.25	180	400	3.6	800	7.1	1,600	8.2	18.1
3/16	5.5	0.217	24.8	0.98	7.7	0.30	365	800	7.1	1,600	14.2	3,200	18.1	39.9
1/4	7.0	0.276	31.5	1.24	9.8	0.38	590	1,300	11.6	2,600	23.2	5,200	29.3	64.6
5/16	8.0	0.315	32.8	1.29	11.2	0.44	860	1,900	15.1	3,400	30.2	6,800	38.5	84.9
3/8	10.0	0.394	35.0	1.38	14.0	0.55	1,200	2,650	23.6	5,300	47.2	10,600	63.7	140
1/2	13.0	0.512	45.5	1.79	18.2	0.72	2,040	4,500	40.0	9,000	80.0	18,000	107.5	237
5/8	16.0	0.630	56.0	2.20	20.0	0.79	3,130	6,900	60.5	13,600	121.0	27,200	155	342
3/4	20.0	0.787	70.0	2.76	25.0	0.98	4,810	10,600	94.2	21,200	188.4	42,400	242	534
7/8	22.0	0.866	77.0	3.03	27.5	1.08	5,810	12,800	113.8	25,600	227.6	51,200	299	659
1	26.0	1.024	90.9	3.58	31.7	1.25	8,120	17,900	159.1	35,800	318.2	71,600	416	917

HIGH TEST CHAIN NACM90 (G43)



Nominal Size	Material Diameter		Inside Length (max.)		Inside Width (min.)		Working Load Limit (max.)		Proof Test (min.)		Min Breaking Load		Unit Weight Per 100'	
	in	mm	in	mm	in	mm	kg	lb	kn	lb	kn	lb	kg	lb
1/4	7.0	0.276	31.5	1.24	9.8	0.38	1,180	2,600	17.3	3,900	34.6	7,800	29.3	64.6
5/16	8.0	0.315	32.8	1.29	11.2	0.44	1,770	3,900	21.8	4,900	43.2	9,700	38.5	84.9
3/8	10.0	0.394	35.0	1.38	14.0	0.55	2,450	5,400	36.0	8,100	72.0	16,200	63.7	140
1/2	13.0	0.512	45.5	1.79	18.2	0.72	4,170	9,200	57.3	12,900	114.2	25,700	107.5	237
5/8	16.0	0.630	56.0	2.20	20.0	0.79	5,900	13,000	86.7	19,500	173.4	39,000	155	342
3/4	20.0	0.787	70.0	2.76	25.0	0.98	9,160	20,200	134.7	30,300	269.4	60,600	242	534

TRANSPORT CHAIN NACM90 (G70)



Nominal Size	Material Diameter		Inside Length (max.)		Inside Width (min.)		Working Load Limit (max.)		Proof Test (min.)		Min Breaking Load		Unit Weight Per 100'	
	in	mm	in	mm	in	mm	kg	lb	kn	lb	kn	lb	kg	lb
1/4	7.0	0.276	31.5	1.24	9.8	0.38	1,430	3,150	28.0	6,300	56.0	12,600	29.4	64.8
5/16	8.7	0.343	32.8	1.29	12.2	0.48	2,130	4,700	41.8	9,400	83.6	18,800	46.7	103
3/8	10.0	0.394	35.0	1.38	14.0	0.55	2,990	6,600	58.7	13,200	117.4	26,400	63.7	140
1/2	13.0	0.512	45.5	1.79	18.2	0.72	5,130	11,300	92.9	20,900	185.8	41,800	107.5	237
5/8	16.0	0.630	56.0	2.20	20.0	0.79	7,170	15,800	140.5	31,600	280.9	63,200	155	342



New York
Tel: 1-212-717-1496
Fax: 1-212-717-1499
<http://dragonsteelproducts.com>
E-mail: sales@dragonsteelproducts.com

Qingdao
Tel: 86-532-81970686
Fax: 86-532-81970685
E-mail: qingdao@dragonsteelproducts.com

Shanghai
Tel: 86-21-54810680
Fax: 86-21-54810003
E-mail: sho@dragonwirerope.com

U.S.A. NACM96 STANDARD LINK CHAIN

PROOF COIL CHAIN NACM96 (G30)



Nominal Size	Material Diameter		Inside Length (max.)		Inside Width (min.)		Working Load Limit (max.)		Proof Test (min.)		Min Breaking (Force)		Unit Weight Per 100'	
	in	mm	in	mm	in	mm	kg	lb	kn	lb	kn	lb	kg	lb
1/8	4.0	0.157	23.9	0.94	6.4	0.25	180	400	3.6	800	7.1	1,600	8.2	18.1
3/16	5.5	0.217	24.8	0.98	7.7	0.30	365	800	7.1	1,600	14.2	3,200	18.1	39.9
1/4	7.0	0.276	31.5	1.24	9.8	0.38	590	1,300	11.6	2,600	23.2	5,200	29.3	64.6
5/16	8.4	0.331	32.8	1.29	11.2	0.44	860	1,900	16.9	3,800	33.8	7,600	38.5	84.9
3/8	10.0	0.394	35.0	1.38	14.0	0.55	1,200	2,650	23.6	5,300	47.2	10,600	63.7	140
7/16	11.9	0.469	41.6	1.64	16.6	0.65	1,680	3,700	32.9	7,400	65.8	14,800	89.6	198
1/2	13.0	0.512	45.5	1.79	18.2	0.72	2,040	4,500	40.0	9,000	80.0	18,000	107.5	237
5/8	16.0	0.630	56.0	2.20	20.0	0.79	3,130	6,900	61.3	13,800	122.6	27,600	155	342
3/4	20.0	0.787	70.0	2.76	25.0	0.98	4,810	10,600	94.2	21,200	188.4	42,400	242	534
7/8	22.0	0.866	77.0	3.03	27.5	1.08	5,810	12,800	113.8	25,600	227.6	51,200	299	659
1	26.0	1.024	90.9	3.58	31.7	1.25	8,120	17,900	159.1	35,800	318.2	71,600	416	917

HIGH TEST CHAIN NACM96 (G43)



Nominal Size	Material Diameter		Inside Length (max.)		Inside Width (min.)		Working Load Limit (max.)		Proof Test (min.)		Min Breaking Load		Unit Weight Per 100'	
	in	mm	in	mm	in	mm	kg	lb	kn	lb	kn	lb	kg	lb
1/4	7.0	0.276	31.5	1.24	9.8	0.38	1,180	2,600	17.3	3,900	34.6	7,800	29.3	64.6
5/16	8.7	0.343	32.8	1.29	11.2	0.44	1,770	3,900	26.0	5,850	52.0	11,700	46.7	103
3/8	10.0	0.394	35.0	1.38	14.0	0.55	2,450	5,400	36.0	8,100	72.0	16,200	63.7	140
1/2	13.5	0.531	45.5	1.79	18.2	0.72	4,170	9,200	61.3	13,800	122.6	27,600	116.4	257
5/8	16.0	0.630	56.0	2.20	20.0	0.79	5,900	13,000	86.7	19,500	173.4	39,000	155	342
3/4	20.0	0.787	70.0	2.76	25.0	0.98	9,160	20,200	134.7	30,300	269.4	60,600	242	534

TRANSPORT CHAIN NACM96 (G70)



Nominal Size	Material Diameter		Inside Length (max.)		Inside Width (min.)		Working Load Limit (max.)		Proof Test (min.)		Min Breaking Load		Unit Weight Per 100'	
	in	mm	in	mm	in	mm	kg	lb	kn	lb	kn	lb	kg	lb
1/4	7.0	0.276	31.5	1.24	9.8	0.38	1,430	3,150	28.0	6,300	56.0	12,600	29.3	64.6
5/16	8.7	0.343	32.8	1.29	11.2	0.44	2,130	4,700	41.8	9,400	83.6	18,800	46.7	103
3/8	10.0	0.394	35.0	1.38	14.0	0.55	2,990	6,600	58.7	13,200	117.4	26,400	63.7	140
1/2	13.5	0.531	45.5	1.79	18.2	0.72	5,130	11,300	100.5	22,600	201.0	45,200	116.4	257
5/8	16.0	0.630	56.0	2.20	20.0	0.79	7,170	15,800	140.5	31,600	280.9	63,200	155	342

New York
Tel: 1-212-717-1496
Fax: 1-212-717-1499

<http://dragonsteelproducts.com>

E-mail: sales@dragonsteelproducts.com

Qingdao

Tel: 86-532-81970686

Fax: 86-532-81970685

E-mail: qingdao@dragonsteelproducts.com

Shanghai

Tel: 86-21-54810680

Fax: 86-21-54810003

E-mail: sho@dragonwire.com



ALLOY LINK CHAIN (G80)



Nominal Size	Material Diameter		Inside Length (max.)		Inside Width (min.)		Working Load Limit (max.)		Proof Test (min.)		Min Breaking Load		Unit Weight Per 100'	
	in	mm	in	mm	in	mm	kg	lb	kn	lb	kn	lb	kg	lb
7/32	6.0	0.236	18.0	0.71	8.7	0.34	1,150	2,550	22.7	5,100	45.4	10,200	24.4	53.8
1/4	7.0	0.276	21.0	0.83	10.5	0.41	1,570	3,500	31.1	7,000	62.2	14,000	33.4	73.6
5/16	8.0	0.315	24.0	0.94	12.0	0.47	2,050	4,500	40.0	9,000	80.0	18,000	43.6	96.0
3/8	10.0	0.394	30.0	1.18	14.5	0.57	3,200	7,100	63.0	14,200	126.0	28,400	67.7	149
1/2	13.0	0.512	39.0	1.54	19.0	0.75	5,400	12,000	107.0	24,000	214.0	48,000	114	251
5/8	16.0	0.630	48.0	1.89	23.0	0.91	8,200	18,100	161.0	36,200	322.0	72,400	170	375
3/4	20.0	0.787	60.0	2.36	28.0	1.10	12,800	28,300	252.0	56,600	503.0	113,200	262	578
7/8	22.0	0.866	66.0	2.60	30.0	1.18	15,500	34,200	304.0	68,400	608.0	136,800	325	717

ITALIAN LINK CHAIN



PROOF COIL CHAIN (G30)

Nominal Size	Material Diameter		Inside Length (max.)		Inside Width (min.)		Working Load Limit (max.)		Proof Test (min.)		Min Breaking Load		Unit Weight Per 100'	
	in	mm	in	mm	in	mm	kg	lb	kn	lb	kn	lb	kg	lb
1/8	4.0	0.157	22.9	0.90	7.0	0.28	180	400	3.56	800	7.1	1,600	8.8	19.4
3/16	5.0	0.197	24.1	0.95	10.2	0.40	300	660	5.9	1,320	11.7	2,640	15.0	33.1
1/4	6.4	0.252	25.4	1.00	12.7	0.50	490	1,080	9.6	2,160	19.2	4,320	25.4	56.0
3/8	9.7	0.382	31.2	1.23	15.8	0.62	1,130	2,500	22.2	5,000	44.5	10,000	62.6	138
1/2	12.7	0.500	39.1	1.54	20.3	0.80	1,950	4,300	38.2	8,600	76.5	17,200	109.0	240
5/8	16.0	0.630	56.0	2.20	20.8	0.82	3,130	6,900	60.5	13,600	121.0	27,200	159.0	351
3/4	20.0	0.787	70.0	2.76	27.0	1.06	4,810	10,600	94.2	21,200	188.4	42,400	250.0	551

HIGH TEST CHAIN (G43)



Nominal Size	Material Diameter		Inside Length (max.)		Inside Width (min.)		Working Load Limit(max.)		Proof Test (min.)		Min Breaking Load		Unit Weight Per 100'	
	in	mm	in	mm	in	mm	kg	lb	kn	lb	kn	lb	kg	lb
1/4	7.0	0.276	25.4	1.00	12.7	0.50	1,180	2,600	16.7	3,750	33.4	7,500	31.6	69.7
5/16	8.7	0.315	28.0	1.10	12.7	0.50	1,770	3,900	21.8	4,900	43.2	9,700	41.2	91
3/8	10.0	0.394	31.2	1.23	15.8	0.62	2,450	5,400	33.8	7,600	67.6	15,200	67.3	148
1/2	13.0	0.512	38.1	1.50	20.3	0.80	4,170	9,200	57.3	12,900	114.2	25,700	115.0	254



New York
Tel: 1-212-717-1496
Fax: 1-212-717-1499
<http://dragonsteelproducts.com>
E-mail: sales@dragonsteelproducts.com

Qingdao
Tel: 86-532-81970686
Fax: 86-532-81970685
E-mail: qingdao@dragonsteelproducts.com

Shanghai
Tel: 86-21-54810680
Fax: 86-21-54810003
E-mail: sho@dragonwirerope.com

MACHINE CHAIN

NACM90 STRAIGHT LINK MACHINE CHAIN



Trade Size	Material Diameter		Inside Length		Inside Width		Working Load		Min. Breaking Load		Unit Weight	
	No.	mm	in	mm	in	mm	in	kg	lb	kg	lb	kg/100'
4	3.05	0.120	14.0	0.55	5.3	0.21	97.5	215	390	860	5.4	11.9
3	3.43	0.135	15.0	0.59	6.1	0.24	123	270	490	1,080	6.9	15.2
2	3.8	0.148	15.5	0.61	6.6	0.26	147	325	590	1,300	8.9	19.6
1	4.1	0.162	16.0	0.63	7.1	0.28	177	390	708	1,560	10.5	23.1
1/0	4.5	0.177	18.8	0.74	7.9	0.31	211	465	844	1,860	12.3	27.1
2/0	4.9	0.192	19.8	0.78	8.6	0.34	247	545	988	2,180	14.8	32.6
3/0	5.3	0.207	21.6	0.85	9.1	0.36	288	635	1,152	2,540	17.2	37.9
4/0	5.5	0.218	25.1	0.99	9.6	0.38	318	700	1,272	2,800	17.8	39.2
5/0	6.4	0.250	27.2	1.07	11.2	0.44	420	925	1,680	3,700	24.8	54.7

NACM90 TWIST LINK MACHINE CHAIN



Trade Size	Material Diameter		Inside Length		Inside Width		Working Load		Min. Breaking Load		Unit Weight	
	No.	mm	in	mm	in	mm	in	kg	lb	kg	lb	kg/100'
4	3.05	0.120	13.1	0.52	4.3	0.17	93.0	205	372	820	5.7	12.6
3	3.43	0.135	14.2	0.56	5.1	0.20	116	255	464	1,020	7.3	16.1
2	3.8	0.148	14.7	0.58	5.3	0.21	141	310	564	1,240	9.2	20.3
1	4.1	0.162	15.0	0.59	6.1	0.24	168	370	672	1,480	11.0	24.3
1/0	4.5	0.177	17.2	0.68	6.6	0.26	200	440	800	1,760	12.9	28.4
2/0	4.9	0.192	18.5	0.73	7.1	0.28	236	520	944	2,080	15.5	34.2
3/0	5.3	0.207	20.3	0.80	7.9	0.31	274	605	1,096	2,420	16.8	37.0
4/0	5.5	0.218	22.5	0.89	8.1	0.32	304	670	1,216	2,680	18.4	40.6
5/0	6.4	0.250	25.3	1.00	9.4	0.37	400	880	1,600	3,520	26.0	57.3



NACM90 STRAIGHT LINK COIL CHAIN



Trade Size	Material Diameter		Inside Length		Inside Width		Working Load		Min. Breaking Load		Unit Weight	
	No.	mm	in	mm	in	mm	in	kg	lb	kg	lb	kg/100'
4	3.05	0.120	28.1	1.11	5.32	0.21	93	205	372	820	4.3	9.5
3	3.43	0.135	29.8	1.17	6.09	0.24	116	255	464	1,020	5.6	12.3
2	3.8	0.148	29.9	1.18	6.59	0.26	141	310	562	1,240	7.2	15.9
1	4.1	0.162	31.7	1.25	7.10	0.28	168	370	672	1,480	8.4	18.5
1/0	4.5	0.177	31.7	1.25	7.86	0.31	200	440	800	1,760	10.4	22.9
2/0	4.9	0.192	31.9	1.26	8.62	0.34	236	520	944	2,080	12.6	27.8
3/0	5.3	0.207	32.9	1.30	9.13	0.36	274	605	1,096	2,420	15.0	33.1
4/0	5.5	0.218	35.2	1.39	9.64	0.38	304	670	1,216	2,680	16.0	35.3
5/0	6.4	0.250	38.5	1.52	11.20	0.44	400	880	1,600	3,520	22.0	48.5

NACM90 TWIST LINK COIL CHAIN



Trade Size	Material Diameter		Inside Length		Inside Width		Working Load		Min. Breaking Load		Unit Weight	
	No.	mm	in	mm	in	mm	in	kg	lb	kg	lb	kg/100'
4	3.05	0.120	27.6	1.09	4.56	0.18	88.5	195	354	780	4.5	9.9
3	3.43	0.135	28.9	1.14	5.32	0.21	109	240	436	960	5.8	12.8
2	3.8	0.148	29.1	1.15	5.58	0.22	134	295	536	1,180	7.5	16.5
1	4.1	0.162	30.9	1.22	6.34	0.25	159	350	636	1,400	8.7	19.2
1/0	4.5	0.177	30.9	1.22	6.85	0.27	188	415	752	1,660	10.9	24.0
2/0	4.9	0.192	31.4	1.24	7.36	0.29	225	495	900	1,980	13.0	28.7
3/0	5.3	0.207	31.9	1.26	8.12	0.32	261	575	1,044	2,300	15.6	34.4
4/0	5.5	0.218	34.0	1.34	8.32	0.33	288	635	1,152	2,540	16.6	36.6
5/0	6.4	0.250	37.3	1.47	9.65	0.38	379	835	1,516	3,340	22.8	50.3



New York
Tel: 1-212-717-1496
Fax: 1-212-717-1499
<http://dragonsteelproducts.com>
E-mail: sales@dragonsteelproducts.com

Qingdao
Tel: 86-532-81970686
Fax: 86-532-81970685
E-mail: qingdao@dragonsteelproducts.com

Shanghai
Tel: 86-21-54810680
Fax: 86-21-54810003
E-mail: sho@dragonwirerope.com

CHAIN ASSEMBLIES

BINDER CHAIN

WITH CLEVIS/EYE GRAB HOOKS ON BOTH ENDS



Chain Size & Length	ASTM80			NACM90			NACM96			Qty Per Drum
	W.T. kg	W.L.L. lb	M.B.S. lb	W.T. kg	W.L.L. lb	M.B.S. lb	W.T. kg	W.L.L. lb	M.B.S. lb	
Grade 43										
1/4 " x 14 '	5.0	2,600	7,800	4.5	2,600	7,500	4.5	2,600	7,800	50
1/4 " x 16 '	6.0	2,600	7,800	5.0	2,600	7,500	5.0	2,600	7,800	40
5/16 " x 14 '	7.5	3,900	11,600	6.0	3,900	9,700	7.0	3,900	11,700	35
5/16 " x 16 '	8.5	3,900	11,600	6.5	3,900	9,700	8.0	3,900	11,700	30
5/16 " x 18 '	9.5	3,900	11,600	7.5	3,900	9,700	9.0	3,900	11,700	30
5/16 " x 20 '	10.5	3,900	11,600	8.0	3,900	9,700	9.5	3,900	11,700	25
5/16 " x 25 '	13.0	3,900	11,600	10.0	3,900	9,700	12.0	3,900	11,700	20
5/16 " x 30 '	15.5	3,900	11,600	12.0	3,900	9,700	14.0	3,900	11,700	20
3/8 " x 14 '	10.5	5,400	16,200	9.5	5,400	16,200	9.5	5,400	16,200	25
3/8 " x 16 '	12.0	5,400	16,200	11.0	5,400	16,200	11.0	5,400	16,200	20
3/8 " x 20 '	15.0	5,400	16,200	13.5	5,400	16,200	13.5	5,400	16,200	20
3/8 " x 25 '	18.5	5,400	16,200	16.5	5,400	16,200	16.5	5,400	16,200	15
Grade 70										
1/4 " x 14 '	5.0	3,150	12,600	4.5	3,150	12,100	4.0	3,150	12,600	50
1/4 " x 16 '	6.0	3,150	12,600	5.0	3,150	12,100	5.0	3,150	12,600	40
5/16 " x 14 '	7.5	4,700	18,800	7.0	4,700	18,800	7.0	4,700	18,800	35
5/16 " x 16 '	8.5	4,700	18,800	8.0	4,700	18,800	8.0	4,700	18,800	30
5/16 " x 18 '	9.5	4,700	18,800	9.0	4,700	18,800	9.0	4,700	18,800	30
5/16 " x 20 '	10.5	4,700	18,800	10.0	4,700	18,800	10.0	4,700	18,800	25
5/16 " x 25 '	13.0	4,700	18,800	12.0	4,700	18,800	12.0	4,700	18,800	20
5/16 " x 30 '	15.5	4,700	18,800	14.5	4,700	18,800	14.5	4,700	18,800	20
3/8 " x 14 '	10.5	6,600	26,400	9.5	6,600	26,400	9.5	6,600	26,400	25
3/8 " x 16 '	12.0	6,600	26,400	11.0	6,600	26,400	11.0	6,600	26,400	20
3/8 " x 20 '	15.0	6,600	26,400	13.5	6,600	26,400	13.5	6,600	26,400	20
3/8 " x 25 '	18.5	6,600	26,400	16.5	6,600	26,400	16.5	6,600	26,400	15

New York

Tel: 1-212-717-1496

Fax: 1-212-717-1499

<http://dragonsteelproducts.com>

E-mail: sales@dragonsteelproducts.com

Qingdao

Tel: 86-532-81970686

Fax: 86-532-81970685

E-mail: qingdao@dragonsteelproducts.com

Shanghai

Tel: 86-21-54810680

Fax: 86-21-54810003

E-mail: sho@dragonwire.com



CHAIN ASSEMBLIES

CHAIN ANCHOR WITH DELTA RING & EYE GRAB HOOK



Delta Ring Size	Enlarged Link Size	Chain Size & Grade	Qty of Chain Grade	Hook Size & Grade	Breaking Load (lbs)	Length	Unit Weight (kg/pc)	Packing (pc/bag)
A	B1 / B2	C		D				
2"	3/8"	1/4" G70	14	5/16" G43	10000	18"	0.90	50
2"	3/8"	5/16" G43	11	3/8" G43	10000	18"	1.18	50
3"	7/16"	5/16" G70	10	5/16" G70	16200	18"	1.32	35
3"	7/16"	5/16" G70	10	3/8" G43	16200	18"	1.48	35
3"	7/16"	3/8" G43	5	3/8" G43	16200	12"	1.28	35
3"	7/16"	3/8" G43	9	3/8" G43	16200	18"	1.68	35
4"	7/16"	3/8" G70	9	3/8" G70	20000	18"	1.94	35

G30 SAFETY CHAIN WITH S HOOKS ON BOTH ENDS



Chain Size	Chain Diameter	S hook Size	W.L.L. (lb)	M.B.S. (lb)
3/16"	5.5mm	3/8"	800	3200
1/4"	7.0mm	7/16"	1300	5200
5/16"	8.4mm	17/32"	1900	7600



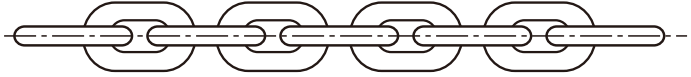
New York
Tel: 1-212-717-1496
Fax: 1-212-717-1499
<http://dragonsteelproducts.com>
E-mail: sales@dragonsteelproducts.com

Qingdao
Tel: 86-532-81970686
Fax: 86-532-81970685
E-mail: qingdao@dragonsteelproducts.com

Shanghai
Tel: 86-21-54810680
Fax: 86-21-54810003
E-mail: sho@dragonwirerope.com

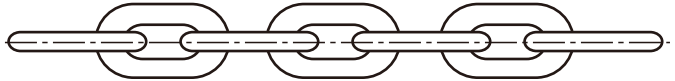
ORDINARY MILD STEEL CHAIN

SHORT LINK CHAIN



Diameter		Inside Length	Outside Width	Test Load	Breaking Load	Approx. Weight	
						Bright	HDG
in	mm	mm	mm	kg	kg	kg/100'	kg/100'
1/8	3.20	16.0	12.0	200	400	5.7	5.9
5/32	4.00	18.5	14.5	300	600	9.3	9.5
3/16	4.70	19.0	17.0	400	800	13.1	13.5
7/32	5.50	20.0	19.0	550	1,100	18.4	19.0
1/4	6.35	22.0	21.0	750	1,500	25.0	25.8
5/16	7.94	26.5	27.2	1,200	2,400	40.0	41.2
3/8	9.50	28.0	32.0	1,700	3,400	61.0	62.9
7/16	11.11	34.0	36.0	2,300	4,600	82.0	84.5
1/2	12.70	39.0	43.0	3,000	6,000	105.0	108.0
5/8	15.80	45.0	53.0	4,700	9,400	167.0	172.0
3/4	19.00	55.0	63.0	6,800	13,600	242.5	250.0
7/8	22.20	64.0	74.0	9,250	18,500	328.0	338.0
1	25.40	73.0	84.0	12,150	24,300	435.0	448.0

MEDIUM LINK CHAIN



Diameter		Inside Length	Outside Width	Test Load	Breaking Load	Approx. Weight	
						Bright	HDG
in	mm	mm	mm	kg	kg	kg/100'	kg/100'
1/8	3.20	20.0	12.0	200	400	5.4	5.5
5/32	4.00	23.0	15.0	300	600	8.7	9.0
3/16	4.70	25.0	18.0	400	800	12.2	12.5
7/32	5.50	26.0	19.0	550	1,100	17.0	17.5
1/4	6.35	26.0	23.0	750	1,500	24.4	25.0
5/16	7.94	32.0	29.0	1,200	2,400	38.0	39.0
3/8	9.50	35.0	35.0	1,700	3,400	55.5	57.0
7/16	11.11	38.0	38.0	2,300	4,600	77.0	79.0
1/2	12.70	50.0	45.5	3,000	6,000	97.0	100.0
5/8	15.80	60.0	56.7	4,700	9,400	152.0	156.0
3/4	19.00	76.0	69.0	6,800	13,600	216.0	223.0
7/8	22.20	90.0	80.0	9,250	18,500	293.0	302.0
1	25.40	105.0	95.0	12,150	24,300	385.0	396.0

New York

Tel: 1-212-717-1496

Fax: 1-212-717-1499

<http://dragonsteelproducts.com>

E-mail: sales@dragonsteelproducts.com

Qingdao

Tel: 86-532-81970686

Fax: 86-532-81970685

E-mail: qingdao@dragonsteelproducts.com

Shanghai

Tel: 86-21-54810680

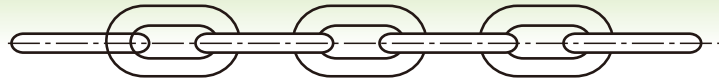
Fax: 86-21-54810003

E-mail: sho@dragonwirerope.com



ORDINARY MILD STEEL LINK CHAIN

LONG LINK CHAIN



Diameter		Inside Length mm	Outside Width mm	Test Load kg	Breaking Load kg	Approx. Weight	
in	mm					Bright kg/100'	HDG kg/100'
1/8	3.20	23.0	12.0	200	400	5.2	5.4
5/32	4.00	27.0	15.0	300	600	8.3	8.7
3/16	4.70	31.0	17.0	400	800	11.2	11.7
7/32	5.50	32.0	19.0	550	1,100	16.0	16.5
1/4	6.35	33.0	21.0	750	1,500	21.8	22.4
5/16	7.94	48.0	31.0	1,200	2,400	34.0	35.0
3/8	9.50	60.0	37.0	1,700	3,400	48.0	49.5
7/16	11.11	71.0	41.0	2,300	4,600	63.0	64.5
1/2	12.70	85.0	48.5	3,000	6,000	83.5	86.0
5/8	15.80	114.0	61.5	4,700	9,400	128.0	132.0
3/4	19.00	125.0	75.0	6,800	13,600	191.0	196.0
7/8	22.20	140.0	88.0	9,250	18,500	264.0	272.0
1	25.40	155.0	100.0	12,150	24,300	348.0	358.0

SINGLE JACK CHAIN



Trade Size No.	Wire Diameter		Inside Length		Working Load lb	Breaking Load lb	Unit Weight	
	mm	in	mm	in			kg/100'	lb/100'
18	1.19	0.047	9.90	0.39	5	20	0.79	1.75
16	1.57	0.062	13.20	0.52	10	40	1.4	3.0
14	2.03	0.080	16.00	0.63	16	65	2.3	5.0
12	2.67	0.105	19.05	0.75	29	115	3.9	8.5
10	3.43	0.135	24.10	0.95	43	170	6.7	14.7
8	4.11	0.162	27.70	1.09	60	240	9.3	20.5
6	4.88	0.192	31.00	1.22	88	350	12.9	28.5

DECORATOR CHAIN

Trade Size	Wire Diameter		WLL lb	Weight lb/100'
	mm	in		
#10	3.0	0.120	45	5



Finish: Bright Brass, Black/White Powder Coated
Antique Brass, Antique Silver



New York
Tel: 1-212-717-1496
Fax: 1-212-717-1499
<http://dragonsteelproducts.com>
E-mail: sales@dragonsteelproducts.com

Qingdao
Tel: 86-532-81970686
Fax: 86-532-81970685
E-mail: qingdao@dragonsteelproducts.com

Shanghai
Tel: 86-21-54810680
Fax: 86-21-54810003
E-mail: sho@dragonwirerope.com

DOUBLE LOOP CHAIN

U.S.A. STANDARD DOUBLE LOOP CHAIN



Trade Size	Diameter	Inside Length	Outside Width	Breaking Load	Unit Weight
	mm	mm	mm	lb	kg/100'
5	1.6	23.4	7.0	220	1.8
4	1.8	25.4	8.0	280	2.2
3	2.0	28.0	9.0	360	3.0
2	2.3	33.8	10.0	460	3.5
1	2.7	43.4	12.0	620	4.5
1L	2.7	51.6	12.0	620	4.2
1/0	3.0	45.2	14.0	800	5.7
1/0L	3.0	56.9	14.0	800	5.2
2/0	3.4	46.2	15.5	1,020	7.5
2/0L	3.4	56.9	15.5	1,020	7.0
3/0	3.8	55.6	17.0	1,220	9.4
4/0	4.1	55.6	19.0	1,460	11.0
6/0	4.9	74.0	21.0	2,080	15.7

DIN 5686 DOUBLE LOOP CHAIN



Trade Size	Diameter	Inside Length	Outside Width	Breaking Load	Unit Weight
	mm	mm	mm	kg	kg/100m
14	1.4	20.0	6.5	16	4.2
16	1.6	23.0	7.0	22	6.0
20	1.8	26.5	8.0	30	7.3
22	2.0	28.0	9.0	40	9.0
25	2.2	31.0	10.0	50	11.0
27	2.5	35.0	11.0	70	14.0
30	2.8	39.0	12.5	90	17.0
32	3.1	41.0	14.0	120	21.0
35	3.4	44.0	15.5	140	26.0
40	3.8	46.0	17.0	160	34.0
45	4.2	52.0	19.0	170	41.0
50	4.6	58.0	20.5	180	50.0
55	5.0	60.0	22.5	190	57.0



DOUBLE LOOP TIE-OUT CHAIN WITH 2 IRON SHEET HOOKS

Item #	Diameter	Length
TCDZ 2010	2.0mm	10'
TCDZ 2015	2.0mm	15'
TCDZ 2510	2.5mm	10'
TCDZ 2515	2.5mm	15'
TCDZ 2520	2.5mm	20'
TCDZ 3010	3.0mm	10'
TCDZ 3015	3.0mm	15'
TCDZ 3020	3.0mm	20'
TCDZ 3410	3.4mm	10'
TCDZ 3415	3.4mm	15'
TCDZ 3420	3.4mm	20'



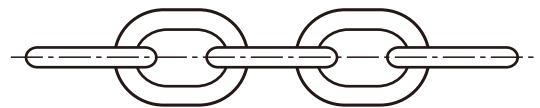
WELDED LONG LINK TIE-OUT CHAIN WITH 2 MALLEABLE SNAP HOOKS

Item #	Diameter	Length
TCWZ 3810	3.8mm	10'
TCWZ 3815	3.8mm	15'
TCWZ 3820	3.8mm	20'
TCWZ 3830	3.8mm	30'



Packing: in plastic bags with header cards, or in clamshells with inserted cards

PASSING LINK CHAIN



Trade Size	Wire Diameter		Inside Length	Inside Width	Working Load	Breaking Load	Unit Weight	
	mm	in					kg/100'	lb/100'
No.					lb	lb		
2/0	4.90	0.192	0.875	0.47	450	1800	15.0	33.1
4/0	5.50	0.218	0.875	0.50	600	2400	19.6	43.2



New York
Tel: 1-212-717-1496
Fax: 1-212-717-1499
<http://dragonsteelproducts.com>
E-mail: sales@dragonsteelproducts.com

Qingdao
Tel: 86-532-81970686
Fax: 86-532-81970685
E-mail: qingdao@dragonsteelproducts.com

Shanghai
Tel: 86-21-54810680
Fax: 86-21-54810003
E-mail: sho@dragonwirerope.com

CHAIN LEADS

TWISTED CHAIN LEAD WITH NYLON OR LEATHER HANDLE ZINC DIECAST SNAP HOOK

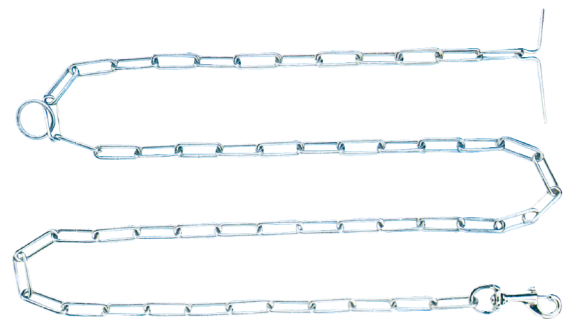
Item #	Diameter	Length
CLTN1612	1.6mm	1.2m
CLTN1610	1.6mm	1.0m
CLTN1606	1.6mm	0.6m
CLTN2012	2.0mm	1.2m
CLTN2010	2.0mm	1.0m
CLTN2006	2.0mm	0.6m
CLTN2512	2.5mm	1.2m
CLTN2510	2.5mm	1.0m
CLTN2506	2.5mm	0.6m
CLTN3012	3.0mm	1.2m
CLTN3010	3.0mm	1.0m
CLTN3006	3.0mm	0.6m
CLTN3512	3.5mm	1.2m
CLTN3510	3.5mm	1.0m
CLTN3506	3.5mm	0.6m
CLTN4012	4.0mm	1.2m
CLTN4010	4.0mm	1.0m
CLTN4006	4.0mm	0.6m



DOUBLE LOOP CHAIN LEAD WITH T HANDLE & IRON SHEET SNAP HOOK

WELDED LINK CHAIN LEAD WITH T HANDLE & MALLEABLE SNAP HOOK

Item #	Diameter	Length
Double Loop Chain		
CLDT1606	1.6mm	6 ft
CLDT1806	1.8mm	6 ft
CLDT2006	2.0mm	6 ft
CLDT2306	2.3mm	6 ft
CLDT2706	2.7mm	6 ft
CLDT3006	3.0mm	6 ft
CLDT3406	3.4mm	6 ft
CLDT3806	3.8mm	6 ft
CLDT4206	4.2mm	6 ft
Welded Long link Chain		
CLWT2506	2.5mm	6 ft
CLWT3006	3.0mm	6 ft
CLWT3506	3.5mm	6 ft
CLWT4006	4.0mm	6 ft



DIN STANDARD LINK CHAIN



DIN5685A SHORT LINK CHAIN

Diameter	Inside Length	Outside Width	Proof Load	Breaking Load	Unit Weight
mm	mm	mm	N	N	kg/100m
2.0	12	8	500	1,250	7.0
2.5	14	10	750	2,000	11.0
3.0	16	12	1,120	2,800	16.5
3.5	18	14	1,500	3,850	22.5
4.0	19	16	2,000	5,000	30.0
4.5	20	18	2,500	6,300	39.5
5.0	21	20	3,150	7,750	50.0
5.5	23	22	3,800	9,500	60.5
6.0	24	24	4,500	11,500	73.0
6.5	26	26	5,400	13,500	86.0
7.0	28	28	6,000	15,000	100
8.0	32	32	8,000	20,000	130
9.0	36	36	10,000	25,000	165
10	40	40	12,500	31,000	205
11	44	44	15,000	38,000	250
12	48	48	18,000	45,000	290
13	52	52	21,200	53,000	345

DIN5685C LONG LINK CHAIN

Diameter	Inside Length	Outside Width	Proof Load	Breaking Load	Unit Weight
mm	mm	mm	N	N	kg/100m
2.0	22	8	500	1,250	6.0
2.5	24	10	750	2,000	10.0
3.0	26	12	1,120	2,800	15.0
3.5	28	14	1,500	3,850	20.0
4.0	32	16	2,000	5,000	27.0
4.5	34	18	2,500	6,300	35.0
5.0	35	20	3,150	7,750	43.0
5.5	38.5	22	3,800	9,500	52.0
6.0	42	24	4,500	11,500	63.0
6.5	45.5	26	5,400	13,500	74.0
7.0	49	28	6,000	15,000	86.0
8.0	52	32	8,000	20,000	110
9.0	59	36	10,000	25,000	141
10	65	40	12,500	31,000	175
11	72	44	15,000	38,000	211
12	78	48	18,000	45,000	255
13	82	52	21,200	53,000	295



New York
Tel: 1-212-717-1496
Fax: 1-212-717-1499
<http://dragonsteelproducts.com>
E-mail: sales@dragonsteelproducts.com

Qingdao
Tel: 86-532-81970686
Fax: 86-532-81970685
E-mail: qingdao@dragonsteelproducts.com

Shanghai
Tel: 86-21-54810680
Fax: 86-21-54810003
E-mail: sho@dragonwirerope.com

DIN STANDARD LINK CHAIN

DIN763 LINK CHAIN

Diameter		Inside Length	Outside Width	Working Load	Test Load	Breaking Load	Approx. Weight
mm	Tolerance	mm	mm	N	N	N	kg/100m
2	+/- 0.5	22	8	25	500	1,250	6
2.5	+/- 0.5	24	10	40	800	2,000	10
3	+/- 0.5	26	12	55	1,050	3,200	15
3.5	+/- 0.5	28	14	80	1,540	3,850	20
4	+/- 0.5	32	16	100	2,000	6,000	27
4.5	+/- 0.5	34	18	128	2,500	6,300	35
5	+/- 0.5	35	20	160	3,150	10,000	43
6	+/- 0.5	42	24	224	4,500	14,000	63
7	+/- 0.5	49	28	300	6,000	18,000	86
8	+/- 0.5	52	32	400	8,000	25,000	110
9	+/- 0.5	59	36	530	10,500	32,000	141
10	+/- 1.0	65	40	630	12,500	40,000	175
11	+/- 1.0	72	44	790	15,800	47,500	211
12	+/- 1.0	78	48	940	18,800	56,500	255
13	+/- 1.0	82	52	1,000	21,200	63,000	295
16	+/- 1.0	100	64	1,600	33,000	100,000	445
18	+/- 1.0	113	70	2,120	42,300	127,000	565
19	+/- 1.0	119	72	2,370	47,300	142,000	625
20	+/- 1.0	120	75	2,500	50,000	160,000	700
22	+/- 1.0	127	82	3,170	63,300	190,000	855
25	+/- 1.0	140	88	4,090	81,700	245,000	1,090
28	+/- 1.0	152	96	6,000	120,000	300,000	1,390

DIN764 LINK CHAIN

Diameter		Inside Length	Inside Width	Outside Width	Test Load	Breaking Load	Approx. Weight
mm	Tolerance	mm	min.	max	kg	N	kg/100m
4	+/- 0.2	16	5	14.0	400	7,000	31.3
5	+/- 0.2	18	7	18.2	680	11,800	51.4
6	+/- 0.2	21	8	21.5	850	16,500	74.0
8	+/- 0.2	28	11	29	1,680	32,000	132
10	+/- 0.3	35	14	36	2,630	50,000	200
12	+/- 0.3	42	16	41	3,680	70,000	298
13	+/- 0.4	45	18	47	4,200	80,000	350
16	+/- 0.5	56	22	58	6,700	125,000	520
18	+/- 0.8	63	24	65	8,400	160,000	650
20	+/- 1.0	70	27	72	10,000	200,000	820
23	+/- 1.2	80	31	83	13,000	250,000	1,100
26	+/- 1.3	91	35	94	16,000	320,000	1,400

New York

Tel: 1-212-717-1496

Fax: 1-212-717-1499

<http://dragonsteelproducts.com>

E-mail: sales@dragonsteelproducts.com

Qingdao

Tel: 86-532-81970686

Fax: 86-532-81970685

E-mail: qingdao@dragonsteelproducts.com

Shanghai

Tel: 86-21-54810680

Fax: 86-21-54810003

E-mail: sho@dragonwirerope.com



DIN STANDARD LINK CHAIN

DIN766 LINK CHAIN



Diameter		Inside Length		Inside Width	Outside Width	Length Of 11 Links	Approx. Weight
mm	Tolerance	mm	Tolerance	mm	mm	mm	kg/m
2	+/- 0.2	12.0	+0.2/- 0.2	3.5	7.5	132	0.07
3	+/- 0.2	16.0	+0.2/- 0.2	4.2	11.0	176	0.16
4	+/- 0.2	16.0	+0.3/- 0.2	5.0	13.7	176	0.32
5	+/- 0.2	18.5	+0.4/- 0.2	6.0	17.0	203.5	0.5
6	+/- 0.2	18.5	+0.4/- 0.2	7.2	20.2	203.5	0.8
7	+/- 0.3	22.0	+0.4/- 0.2	8.4	23.8	242	1.1
8	+/- 0.3	24.0	+0.4/- 0.2	9.6	27.2	264	1.4
9	+/- 0.4	27.0	+0.5/- 0.3	10.8	30.6	297	1.8
10	+/- 0.4	28.0	+0.5/- 0.3	12.0	34.0	308	2.2
11	+/- 0.4	31.0	+0.5/- 0.3	13.2	37.4	341	2.7
12	+/- 0.5	36.0	+0.6/- 0.3	14.4	40.8	396	3.1
13	+/- 0.5	36.0	+0.6/- 0.3	15.6	44.2	396	3.8
14	+/- 0.6	41.0	+0.7/- 0.4	16.8	47.6	451	4.4
16	+/- 0.6	45.0	+0.8/- 0.4	19.2	54.4	495	5.7
18	+/- 0.9	50.0	+0.8/- 0.4	21.6	61.2	550	7.3
19	+/- 0.9	53.0	+0.9/- 0.4	22.8	64.6	583	8.0
20	+/- 1.0	56.0	+1.0/- 0.5	24.0	68.0	616	9.0
22	+/- 1.2	62.0	+1.1/- 0.5	26.4	75.0	682	11.0
23	+/- 1.2	64.0	+1.1/- 0.5	27.6	78.2	704	12.0
26	+/- 1.3	73.0	+1.2/- 0.6	31.2	88.4	803	15.0
28	+/- 1.4	78.0	+1.3/- 0.65	33.8	95.2	858	18.0
30	+/- 1.5	84.0	+1.4/- 0.7	41.0	102.0	924	19.5
32	+/- 1.6	90.0	+1.5/- 0.75	43.0	108.8	990	23.0

Packing methods for link chain:

- * Iron Drums
- * Plastic Pails
- * Plastic Reels
- * Gunny Bags
- * Wooden Crates
- * Cartons



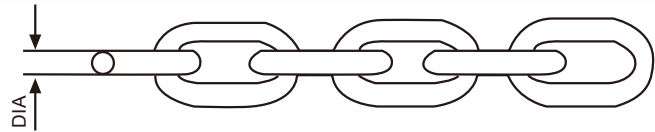
New York
Tel: 1-212-717-1496
Fax: 1-212-717-1499
<http://dragonsteelproducts.com>
E-mail: sales@dragonsteelproducts.com

Qingdao
Tel: 86-532-81970686
Fax: 86-532-81970685
E-mail: qingdao@dragonsteelproducts.com

Shanghai
Tel: 86-21-54810680
Fax: 86-21-54810003
E-mail: sho@dragonwirerope.com

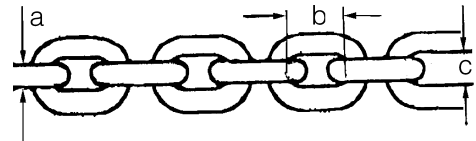
CHAIN

BARGE CHAIN



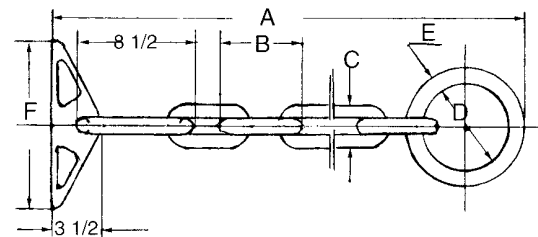
Dia (in)	Inner Length (in)	Inner Width (in)	Link #	M.B.S. (lb)	Weight (lb)
1	5	2	6	55000	20.0
1	5	2	6	80000	20.0
1	5	2	8	80000	26.0

LONG LINK LASHING CHAIN



Size a x b x c	M.B.S. (lb)	Weight (kg)/ft
1/2" x 3 1/8" x 1" 14mm x 79.36mm x 25.4mm	39000	1.06
16mm x 64mm x 24mm	36000	1.55
3/4" x 4" x 1 1/4" 18mm x 102mm x 31.75mm	38000	1.77
3/4" x 4 1/4" x 1 1/8" 18mm x 108mm x 28.6mm	38000	1.76
3/4" x 4 1/2" x 1 1/8" 18mm x 114mm x 28.6mm	38000	1.71

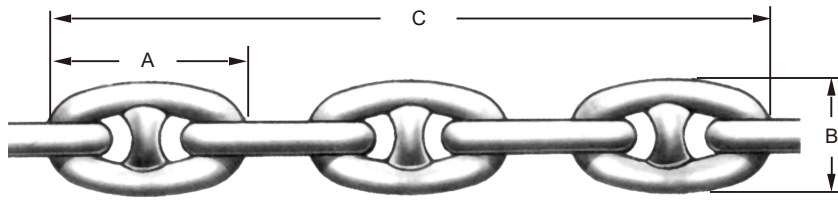
BOOM CHAIN



Size (in)	Weight (lb)	Average M.B.S. (lb)	Dimensions (in)					
			A (ft)	B	C	D	E	F
3/4	37	75000	7	4 1/2	2 5/8	5 1/2	1	12
7/8	53	75000	7	5 1/4	3 1/8	6	1 1/8	12
1	65	90000	7	6	3 1/2	6	1 1/8	12



STUD LINK ANCHOR CHAIN



Chain Size		Dimensions (in)				Test Requirements							
in	mm	Link Length A	Link Width B	Length Of 5-Links C	Weight Per 90° (lb)	Grade 1		Grade 2		Grade 3		Oil Rig Quantity	
						Proof Load	Break Load	Proof Load	Break Load	Proof Load	Break Load	Proof Load	Break Load
5/8	16	3-3/4	2-1/4	13-3/4	365	16620	23745	23745	33220	33220	47465	-	-
3/4	19	4-1/2	2-5/8	16-1/2	480	23800	34000	34000	47600	47600	68000	-	-
13/16	20	4-7/8	2-7/8	17-7/8	570	27800	39800	39800	55700	55700	79500	-	-
7/8	22	5-1/4	3-1/8	19-1/4	660	32200	46000	46000	64400	64400	91800	-	-
15/16	24	5-5/8	3-5/16	20-5/8	760	36800	52600	52600	73700	73700	105000	-	-
1	25	6	3-9/16	22	860	41800	59700	59700	83600	83600	119500	84000	129000
1-1/8	28	6-3/4	4	24-3/4	1080	52600	75000	75000	105000	105000	150000	106000	161000
1-3/16	30	7-1/8	4-1/4	26-1/8	1220	58400	83400	83400	116500	116500	167000	-	-
1-1/4	32	7-1/2	4-1/2	27-1/2	1350	64500	92200	92200	129000	129000	184000	130000	198000
1-3/8	34	8-1/4	4-15/16	30-1/4	1630	77500	111000	111000	155000	155000	222000	157000	235000
1-7/16	36	8-5/8	5-3/16	31-5/8	1780	84500	120500	120500	169000	169000	241000	-	-
1-1/2	38	9	5-3/8	33	1940	91700	131000	131000	183500	183500	262000	185000	280000
1-9/16	40	9-3/8	5-5/8	34-3/8	2090	99200	142000	142000	198500	198500	284000	-	-
1-5/8	42	9-3/4	5-7/8	35-3/4	2240	108000	153000	153000	214000	214000	306000	216000	325000
1-3/4	44	10-1/2	6-5/16	38-1/2	2590	123500	176000	176000	247000	247000	352000	249000	380000
1-13/16	46	10-7/8	6-1/2	39-7/8	2790	132000	188500	188500	264000	264000	377000	-	-
1-7/8	48	11-1/4	6-3/4	41-1/4	2980	140500	201000	201000	281000	281000	402000	285000	432000
2	50	12	7-3/16	44	3180	149500	214000	214000	299000	299000	427000	-	-
2-1/16	52	12-3/8	7-7/16	45-3/8	3570	168500	241000	241000	337000	337000	482000	342000	518000
2-1/8	54	12-3/4	7-5/8	46-3/4	3790	178500	255000	255000	357000	357000	510000	362000	548000
2-3/16	56	13-1/8	7-7/8	48-1/8	4020	188500	269000	269000	377000	377000	538000	382500	579100
2-1/4	58	13-1/2	8-1/8	49-1/2	4250	198500	284000	284000	396000	396000	570000	403000	610000
2-3/8	60	14-1/4	8-9/16	52-1/4	4730	212000	314000	314000	440000	440000	628000	447000	675000
2-7/16	62	14-5/8	8-3/4	53-5/8	4960	231000	330000	330000	462000	462000	660000	469500	709500
2-1/2	64	15	9	55	5270	242000	346000	346000	484000	484000	692000	492000	744000
2-9/16	66	15-3/8	9-1/4	56-3/8	5540	254000	363000	363000	507000	507000	726000	516000	778500
2-5/8	67	15-3/4	9-7/16	57-3/4	5820	265000	379000	379000	530000	530000	758000	540000	813000
2-11/16	68	16-1/8	9-11/16	59-1/8	6110	277000	396000	396000	554000	554000	792000	565000	849000
2-3/4	70	16-1/2	9-7/8	60-1/2	6410	289000	413000	413000	578000	578000	826000	590000	885000
2-7/8	73	17-1/4	10-3/8	63-1/4	7020	314000	449000	449000	628000	628000	897000	640000	965000
3	76	18	10-13/16	66	7650	340000	485000	485000	679000	679000	970000	693000	1045000
3-1/16	78	18-3/8	11	67-3/8	7980	353000	504000	504000	705000	705000	1008000	720500	1086500
3-3/16	81	19-1/8	11-1/2	70-1/8	8660	380000	542000	542000	759000	759000	1084000	776050	1169000
3-1/4	83	19-1/2	11-11/16	71-1/2	9010	393000	562000	562000	787000	787000	1124000	804100	1210000
3-5/16	84	19-7/8	11-15/16	72-7/8	9360	407000	582000	582000	814000	814000	1163000	833150	1253000
3-3/8	86	20-1/4	12-1/8	74-1/4	9730	421000	602000	602000	843000	843000	1204000	862200	1296000
3-7/16	87	20-5/8	12-3/8	75-5/8	10100	435000	622000	622000	871000	871000	1244000	892100	1339550
3-1/2	90	21	12-5/8	77	10300	450000	643000	643000	900000	900000	1285000	922000	1383100
3-5/8	92	21-3/4	12-15/16	79-3/4	11300	479000	685000	685000	958000	958000	1369000	1021000	1566000
3-3/4	95	22-1/2	13-3/8	82-1/8	12000	509000	728000	728000	1019000	1019000	1455000	1120000	1750000
3-7/8	98	23-1/4	14	85-1/4	12900	540000	772000	772000	1080000	1080000	1543000	1205000	1863000
4	102	24	14-3/8	88	13700	571000	816000	816000	1143000	1143000	1632000	1298000	1996500

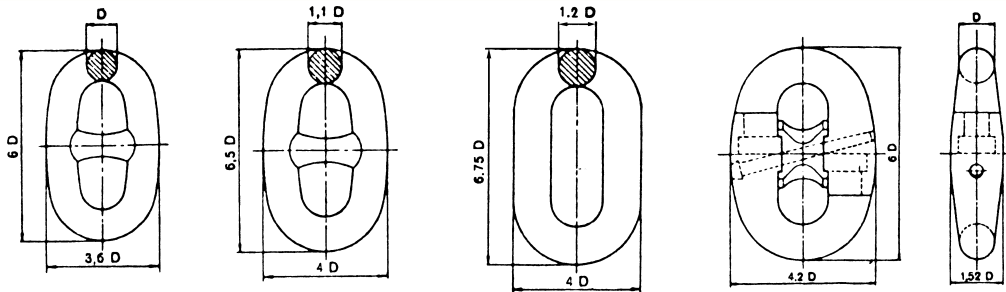


New York
Tel: 1-212-717-1496
Fax: 1-212-717-1499
<http://dragonsteelproducts.com>
E-mail: sales@dragonsteelproducts.com

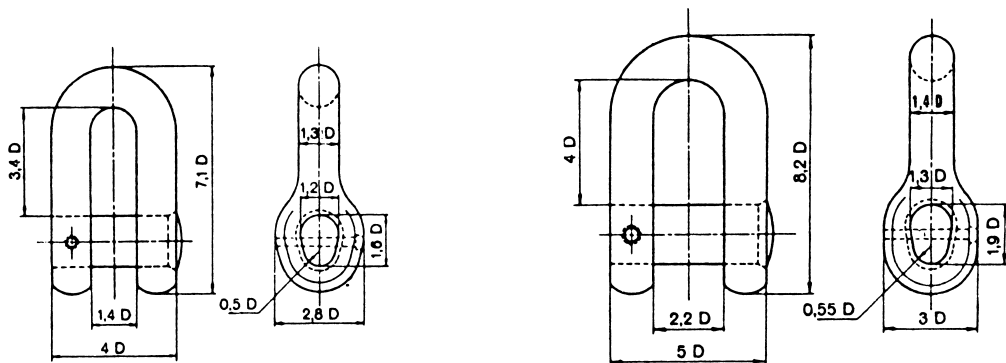
Qingdao
Tel: 86-532-81970686
Fax: 86-532-81970685
E-mail: qingdao@dragonsteelproducts.com

Shanghai
Tel: 86-21-54810680
Fax: 86-21-54810003
E-mail: sho@dragonwirerope.com

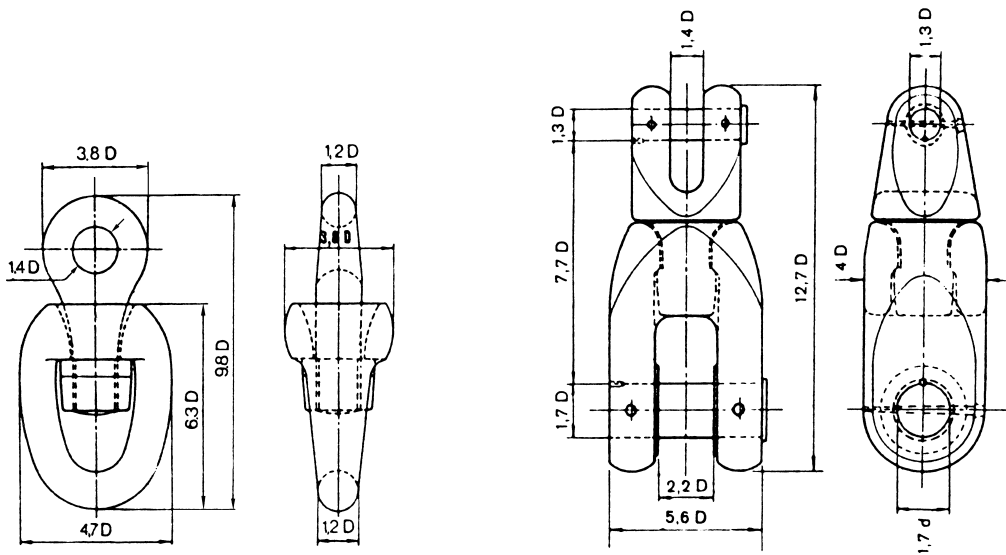
ACCESSORIES FOR ANCHOR CHAIN



a. Common Link b. Enlarged Link c. End Link d. Kenter Shackle



e. D Type Joining Shackle f. D Type Anchor Shackle



g. Swivel h. Swivel Shackle

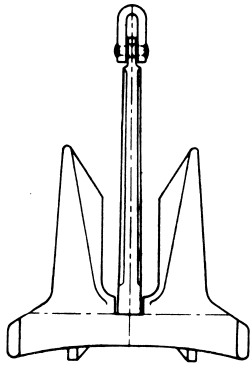
Specifications available upon request.

New York
Tel: 1-212-717-1496
Fax: 1-212-717-1499
<http://dragonsteelproducts.com>
E-mail: sales@dragonsteelproducts.com

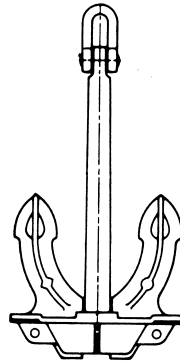
Qingdao
Tel: 86-532-81970686
Fax: 86-532-81970685
E-mail: qingdao@dragonsteelproducts.com

Shanghai
Tel: 86-21-54810680
Fax: 86-21-54810003
E-mail: sho@dragonwire.com

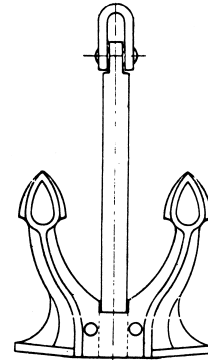




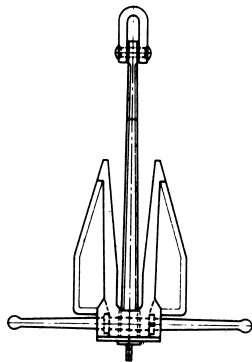
AC 14



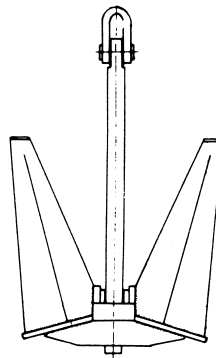
Hall



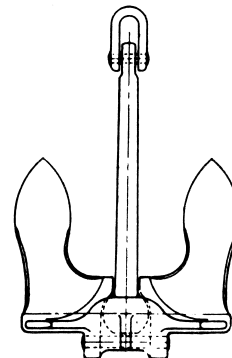
Spek



Danforth



Pool



Baldt

Specifications available upon request.



New York
Tel: 1-212-717-1496
Fax: 1-212-717-1499
<http://dragonsteelproducts.com>

Qingdao
Tel: 86-532-81970686
Fax: 86-532-81970685

Shanghai
Tel: 86-21-54810680
Fax: 86-21-54810003

E-mail: sales@dragonsteelproducts.com E-mail: qingdao@dragonsteelproducts.com E-mail: sho@dragonwirerope.com