

Dragon Steel Products was established with the goal of providing our international customers with the highest level of professional service and quality merchandise at competitive prices. We are recognized and respected around the world for our ability to source the most ordinary and the most unusual products.

Our extensive contacts with a diverse range of Asian manufacturers enable us to ensure export to world-wide markets with attention to major international specifications.

We maintain offices in New York, Qingdao and Shanghai, China, providing around-the-clock response and service to our customers.

Product Specialization:

Steel forgings and castings, wire rope, cable and related accessories. Other products include valves, pipe fittings, wire mesh, agricultural implements, material handling equipment and cargo tie-down components. All industries and markets are accessible through our extensive contacts.

Technology:

Continually updated databases and extensive travel throughout Asia keep us in contact with the most innovative manufacturers, enabling us to offer an ever expanding range of products to meet our customer's needs. Our offices are electronically linked, around the clock and around the world, providing you with responsive customer service.

Quality:

We place the highest emphasis on quality control and inspect all orders prior to shipment. Our strategic locations near the Southern ports of Shanghai and Northern ports of Qingdao enable us to consolidate products from several manufacturers in the same shipment, ensuring that you receive the optimum product mix via the most direct route.

Products liability insurance:

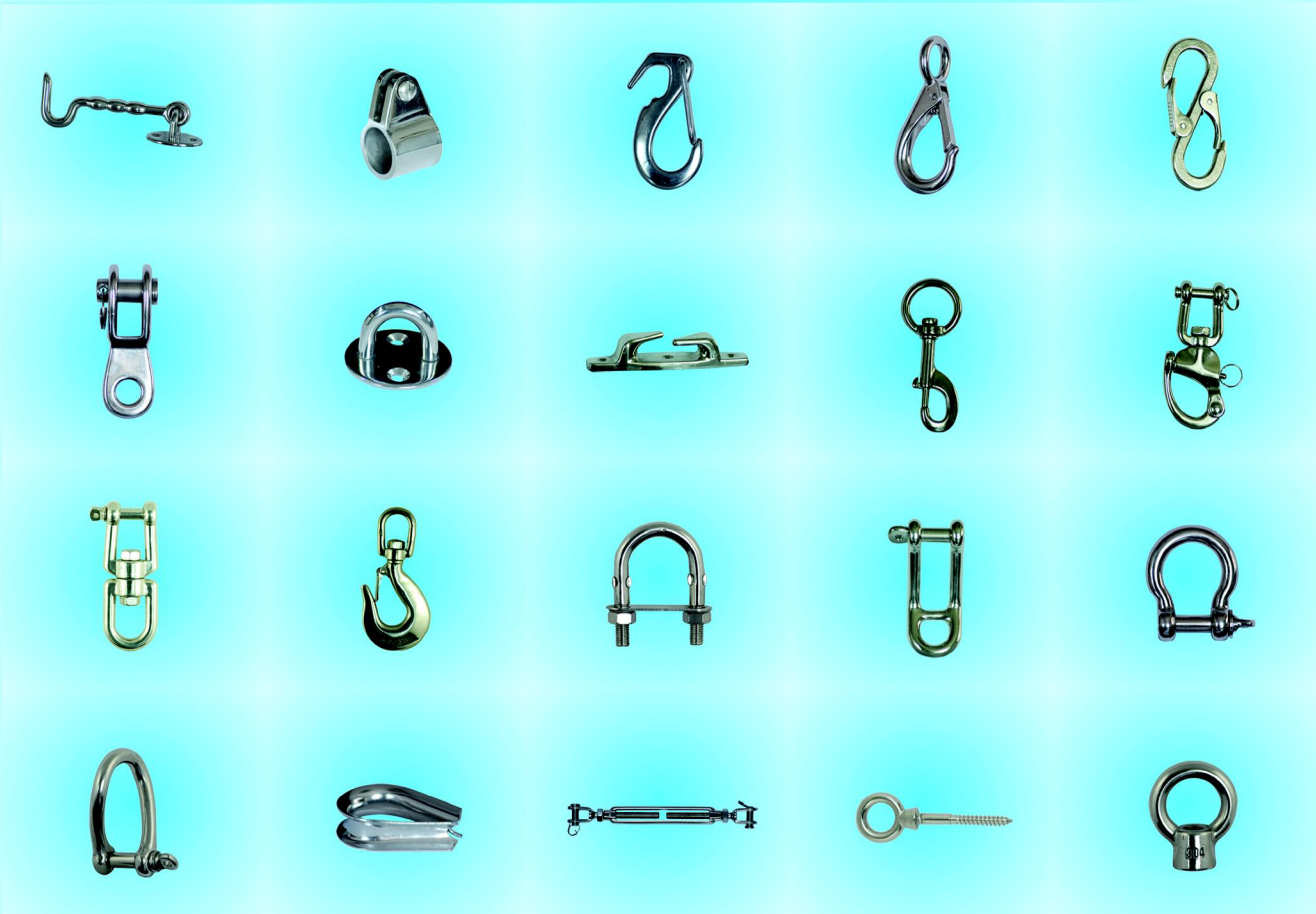
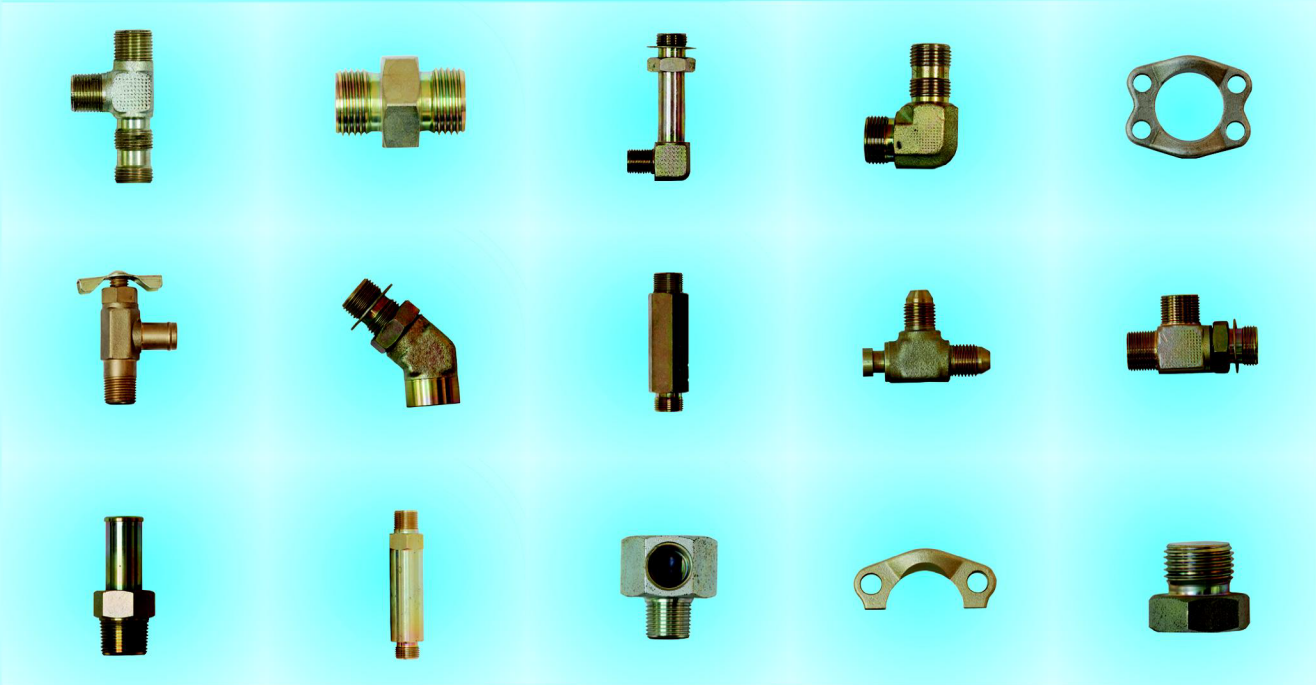
Dragon Steel Products is insured by a reputable carrier. Certificates of insurance can be provided upon request.

Dragon Steel Products's goal is to cultivate long term business relationships with our clients, and we place the highest priority on hands-on account and product management with your organization. Our success is a mirror of our customer's satisfaction, and we are confident our attention to detail will surpass your experience dealing with other firms.

Dragon Steel Products welcomes your enquiry and looks forward to assisting you with all your import needs. Please contact us for more information and personalized attention.

PRODUCTS INDEX

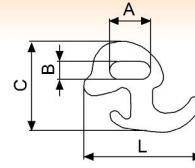
STEEL WIRE ROPE	1 - 20
PC STRANDS	21
CABLE TIE-OUTS	22 - 23
CHAIN	24 - 40
ANCHOR CHAIN	41 - 43
HOOKS	44 - 55
LINKS	56 - 62
LOAD BINDERS	63
TURNBUCKLES	64 - 67
EYE BOLTS	68 - 71
SHACKLES	72 - 75
WIRE ROPE CLIPS	76 - 77
THIMBLES	78 - 81
SNAP HOOKS	82 - 83
SLEEVES	84
SMALL ANCHORS	85 - 86
RATCHET BUCKLES	87 - 88
METAL HOOKS	89 - 91
CAM BUCKLES	92
WINCHES	93
WEBBING SLINGS	94
RATCHET STRAPS	95
PULLEYS AND BLOCKS	96 - 102
CHAIN BLOCKS	103 - 104
LEVER BLOCKS	105 - 106
CLAMPS	107 - 109
CUTTING, BENDING*SWAGING TOOLS	110 - 112
TROLLEYS	113
PALLET TRUCKS	114
WIRE ROPE WINCHES	115



HOOKS

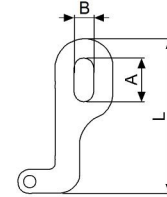
R Hook

Stock No.	Size (in)	Dimensions (mm)				M.B.S. (lbs)		Weight (lbs)
		A	B	C	L	Carbon	Alloy	
RHK516	5/16	28.95	14.22	67.05	85.60	11700	18800	0.66



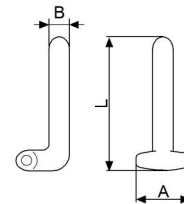
T Hook

Stock No.	Size (in)	Dimensions (mm)			M.B.S. (lbs)		Weight (lbs)
		A	B	L	Carbon	Alloy	
THK516	5/16	28.95	14.22	101.10	15600	18800	0.57



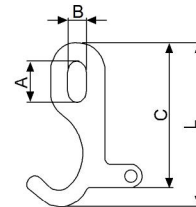
T Shank Hook

Stock No.	Size (in)	Dimensions (mm)			Weight (lbs)
		A	B	L	
TSTRAHK516	5/16	41.0	15.9	101.0	0.48



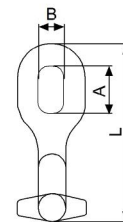
T-J Hook

Stock No.	Size (in)	M.B.S. (lbs)		Dimensions (mm)				Weight (lbs)
		Carbon	Alloy	A	B	C	L	
TJHK516	5/16	11700	15600	28.5	12.7	100.5	114.0	0.70



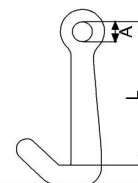
90° T-J Hook

Stock No.	Chain Size (in)	Dimensions (mm)			M.B.S. (lbs)		Weight (lbs)
		A	B	L	T Part	J Part	
TJHK516D90	5/16	27.8	14.4	101.0	15600	11200	0.77



Small J Hook

Stock No.	Size (in)	M.B.S. (lbs)	Dimensions (mm)		Weight (lbs)
			A	L	
SMJHK51638	5/16-3/8	18800	14.5	106.0	0.70

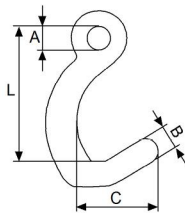




J TYPE HOOK WITH ROUND HOLE

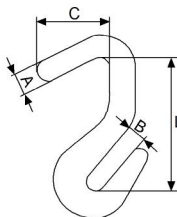
Stock No.	Size (in)	W.L.L. (lbs)	Overall Length (mm)	Dia On Eye (mm)	Weight (lbs)
JHKRHOLE08	8	5400	207.8	207.8	2.88
JHKRHOLE15	15	5400	387.7	387.7	4.89

*Ultimate load is 4 times working load limit



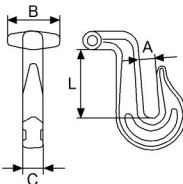
FALCATE HOOK

Stock No.	Dimensions (in)				M.B.S. (lbs)	Weight (lbs)
	A	B	C	L		
FALH01	0.55	0.55	1.86	3.35	15600	0.55
FALH02	0.56	0.59	1.92	3.21	18800	0.66



LONG FALCATE HOOK

Stock No.	Dimensions (in)				M.B.S. (lbs)	Weight (lbs)
	A	B	C	L		
LFALH01	0.57	0.46	1.85	3.38	12600	0.70
LFALH02	0.57	0.46	1.85	3.38	15600	0.79
LFALH03	0.78	0.47	1.85	3.40	18800	1.00

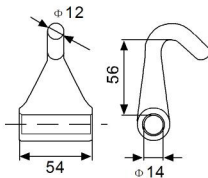


GRAB HOOK WITH T TYPE HANDLE

Stock No.	Size (in)	M.B.S. (lbs)	Dimensions (mm)				Weight (lbs)
			A	B	C	L	
GHTH516	5/16	18800	12	41	15.5	53	0.79

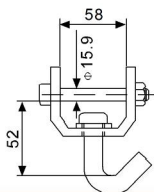
WEBBING HOOK

- Stock No. WEBH01
- Forged Alloy Steel.
- Quenched & Tempered.
- Ultimate Load is 7600 lbs.
- Weight: 0.72 lbs.



SWIVEL J HOOK

- Stock No. SWJH01
- Body Forged Alloy Steel.
- Ultimate Load is 9900 lbs.
- Weight: 1.15 lbs.



New York
Tel: 1-212-717-1496
Fax: 1-212-717-1499
<http://dragonsteelproducts.com>
E-mail: sales@dragonsteelproducts.com

Qingdao
Tel: 86-532-81970686
Fax: 86-532-81970685

Shanghai
Tel: 86-21-54810680
Fax: 86-21-54810003

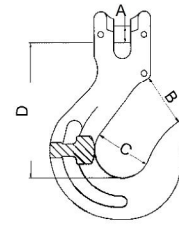
E-mail: qingdao@dragonsteelproducts.com E-mail: sho@dragonwirerope.com

HOOKS

G80 CLEVIS SLING HOOK

Stock No.	Size (in)	W.L.L. (lbs)	Dimensions (in)				Weight (lbs)	Weight (lbs) w/latch
			A	B	C	D		
G8CSHK93214/L	9/32-1/4	3500	23/64	1 7/16	1 3/4	3 23/32	0.95	0.97
G8CSHK03800/L	3/8	7100	29/64	1 15/32	2 15/64	4 47/64	2.15	2.18
G8CSHK01200/L	1/2	12000	19/32	2 1/8	2 1/2	5 21/32	4.35	4.39
G8CSHK05800/L	5/8	18100	3/4	2 11/32	2 7/8	6 19/32	8.00	8.06

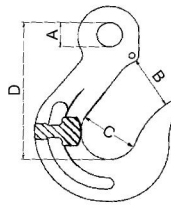
*Ultimate load is 4 times working load limit



G80 EYE SLING HOOK

Stock No.	Size (in)	W.L.L. (lbs)	Dimensions (mm)				Weight (lbs)	Weight (lbs) w/latch
			A	B	C	D		
G8ESHK93214/L	9/32-1/4	3500	14.3	36.5	44.4	94.5	0.84	0.88
G8ESHK03800/L	3/8	7100	19.1	45.2	56.8	120.3	1.85	1.92
G8ESHK01200/L	1/2	12000	23.8	54.0	63.6	143.7	3.74	3.83
G8ESHK05800/L	5/8	18100	28.6	59.5	67.0	167.5	8.08	8.21

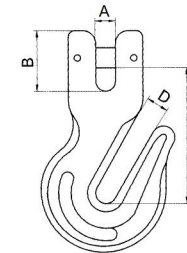
*Ultimate load is 4 times working load limit



G80 CLEVIS GRAB HOOK

Stock No.	Size (in)	W.L.L. (lbs)	Dimensions (in)				Weight (lbs)
			A	B	C	D	
G8CGHK93214/L	9/32-1/4	3500	0.37	1.10	2.56	0.38	0.62
G8CGHK03800/L	3/8	7100	0.47	1.32	3.25	0.50	1.26
G8CGHK01200/L	1/2	12000	0.57	1.61	4.19	0.62	3.45
G8CGHK05800/L	5/8	18100	0.81	2.05	5.03	0.75	5.64
G8CGHK03400/L	3/4	28300	0.88	2.71	5.95	0.88	10.40

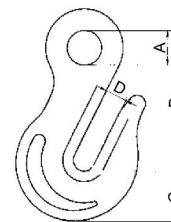
*Ultimate load is 4 times working load limit



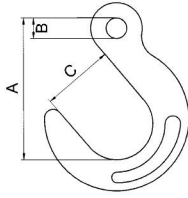
G80 EYE GRAB HOOK

Stock No.	Size (in)	W.L.L. (lbs)	Dimensions (in)				Weight (lbs)
			A	B	C	D	
G8EGHK93214	9/32-1/4	3500	0.59	2.56	0.91	0.38	0.62
G8EGHK03800	3/8	7100	0.80	3.25	1.16	0.50	1.26
G8EGHK01200	1/2	12000	0.98	4.19	1.69	0.63	3.00
G8EGHK03400	3/4	28300	1.36	5.95	2.19	0.88	8.25
G8EGHK07800	7/8	34200	1.55	6.88	2.56	1.06	11.90

*Ultimate load is 4 times working load limit



G80 EYE FOUNDRY HOOK



Stock No.	Size (in)	Dimensions (in)			W.L.L. (lbs)	Weight (lbs)
		A	B	C		
G8EFHK93214	9/32-1/4	4.75	0.63	2.50	3500	2.40
G8EFHK03800	3/8	5.75	0.75	3.00	7100	4.50
G8EFHK01200	1/2	6.88	1.00	3.50	12000	7.10
G8EFHK05800	5/8	8.06	1.25	4.00	18100	12.20
G8EFHK03400	3/4	9.25	1.50	4.50	28300	19.30
G8EFHK07800	7/8	10.38	1.75	5.00	34200	26.30

*Ultimate load is 4 times working load limit

G80 EYE GRAB HOOK WITH BRIDGE



Stock No.	Size (mm)	W.L.L. (tons)	Weight (kgs)
G8EGHKBRIG0600	6	1.12	0.16
G8EGHKBRIG0708	7 - 8	2.00	0.31
G8EGHKBRIG1000	10	3.15	0.72
G8EGHKBRIG1300	13	5.30	1.38
G8EGHKBRIG1600	16	8.00	2.39
G8EGHKBRIG1820	18 - 20	12.50	4.26
G8EGHKBRIG2200	22	15.00	5.95

*Ultimate load is 4 times working load limit

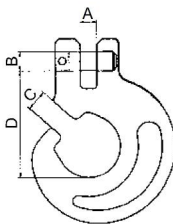
G80 CLEVIS GRAB HOOK WITH BRIDGE



Stock No.	Size (mm)	W.L.L. (tons)	Weight (kgs)
G8CGHKBRIG0600	6	1.12	0.17
G8CGHKBRIG0708	7 - 8	2.00	0.35
G8CGHKBRIG1000	10	3.15	0.81
G8CGHKBRIG1300	13	5.30	1.38
G8CGHKBRIG1600	16	8.00	2.50
G8CGHKBRIG1820	18 - 20	12.50	4.50
G8CGHKBRIG2200	22	15.00	5.90

*Ultimate load is 4 times working load limit

G80 SLING HOOK



Stock No.	Size (mm)	Dimensions (mm)				M.B.S. (tons)	Weight (kgs)
		A	B	C	D		
G8SHK67	6-7	8.7	7.9	8.6	42.0	6.2	0.26
G8SHK78	7-8	9.0	10.3	10.4	55.7	10.0	0.42
G8SHK10	10	12.2	12.5	11.6	76.0	12.0	0.82



New York
Tel: 1-212-717-1496
Fax: 1-212-717-1499
<http://dragonsteelproducts.com>
E-mail: sales@dragonsteelproducts.com

Qingdao
Tel: 86-532-81970686
Fax: 86-532-81970685

E-mail: qingdao@dragonsteelproducts.com

Shanghai
Tel: 86-21-54810680
Fax: 86-21-54810003

E-mail: sho@dragonwire rope.com

HOOKS

G80 SAFETY EYE HOOK

Stock No.	Size Of Chain (mm)	W.L.L. (tons)	Overall Length (mm)	Weight (kgs)
G8SEHK0600	6	1.12	142	0.50
G8SEHK0708	7 - 8	2.00	172	0.80
G8SEHK1000	10	3.15	216	1.50
G8SEHK1300	13	5.30	260	3.20
G8SEHK1600	16	8.00	328	5.74
G8SEHK2000	20	12.50	357	8.50
G8SEHK2200	22	15.00	425	13.00
G8SEHK2600	26	21.20	472	18.00
G8SEHK3200	32	31.50	614	44.50

*Ultimate load is 4 times working load limit



G80 SAFETY SWIVEL HOOK

Stock No.	Size Of Chain (mm)	W.L.L. (tons)	Overall Length (mm)	Weight (kgs)
G8SSHK0600	6	1.12	187	0.71
G8SSHK0708	7 - 8	2.00	225	1.10
G8SSHK1000	10	3.15	273	2.00
G8SSHK1300	13	5.30	349	4.00
G8SSHK1600	16	8.00	410	7.30
G8SSHK2000	20	12.50	460	11.60
G8SSHK2200	22	15.00	580	16.00
G8SSHK2600	26	21.20	672	21.50
G8SSHK3200	32	31.50	849	79.00

*Ultimate load is 4 times working load limit



G80 SAFETY CLEVIS HOOK

Stock No.	Size Of Chain (mm)	W.L.L. (tons)	Overall Length (mm)	Weight (kgs)
G8SCHK0600	6	1.12	142	0.50
G8SCHK0708	7 - 8	2.00	172	0.80
G8SCHK1000	10	3.15	215	1.50
G8SCHK1300	13	5.30	262	2.80
G8SCHK1600	16	8.00	328	5.60
G8SCHK2000	20	12.50	416	7.50
G8SCHK2200	22	15.00	490	11.50
G8SCHK2600	26	21.20	536	18.50

*Ultimate load is 4 times working load limit



New York

Tel: 1-212-717-1496

Fax: 1-212-717-1499

<http://dragonsteelproducts.com>

E-mail: sales@dragonsteelproducts.com

Qingdao

Tel: 86-532-81970686

Fax: 86-532-81970685

E-mail: qingdao@dragonsteelproducts.com

Shanghai

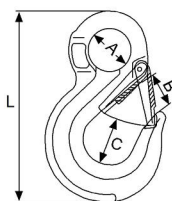
Tel: 86-21-54810680

Fax: 86-21-54810003

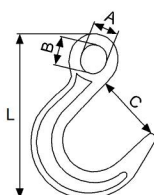
E-mail: sho@dragonwirerope.com



G80 EYE SLING HOOK WITH LATCH, NEW STYLE

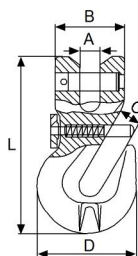


Stock No.	W.L.L. (tons)	M.B.S. (tons)	Dimensions (mm)				Weight (kgs)
			A	B	C	L	
NESHL06G8	1.12	4.48	20	24	21	108	0.3
NESHL7/8G8	2.00	8.00	25	30	26	133	0.4
NESHL10G8	3.15	12.60	38	34	39	167	0.9
NESHL13G8	5.30	21.20	43	39	54	213	1.7
NESHL16G8	8.00	32.00	50	46	64	255	3.2
NESHL20G8	12.50	50.00	62	40	80	305	5.8
NESHL22G8	15.00	60.00	62	71	80	348	8.5
NESHL26G8	21.20	84.80	64	81	82	394	13.0
NESHL32G8	31.50	126.00	88	102	112	480	17.0



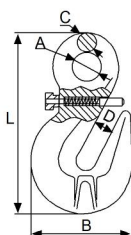
G80 LARGE OPENING EYE HOOK

Stock No.	W.L.L. (tons)	M.B.S. (tons)	Dimensions (mm)				Weight (kgs)
			A	B	C	L	
LOEH3.2TG8	3.2	12.8	31	36	60	173.5	0.84
LOEH3.8TG8	3.8	15.2	31	36	78	199.0	1.17



G80 PWB NEW TYPE CLEVIS SHORTENING HOOK

Stock No.	W.L.L. (tons)	M.B.S. (tons)	Dimensions (mm)					Weight (kgs)
			A	B	C	D	L	
PWBCH06G8	1.12	4.48	8.0	32.0	8.0	43.5	75.0	0.28
PWBCH07/8G8	2.00	8.00	9.5	35.0	11.0	49.5	89.0	0.33
PWBCH10G8	3.15	12.60	12.5	42.5	13.2	70.5	126.5	0.88
PWBCH13G8	5.30	21.20	15.0	53.0	16.5	90.0	163.5	1.85
PWBCH16G8	8.00	32.00	19.5	65.5	19.2	112.5	183.5	3.24



G80 PWB NEW TYPE EYE SHORTENING HOOK

Stock No.	W.L.L. (tons)	M.B.S. (tons)	Dimensions (mm)					Weight (kgs)
			A	B	C	D	L	
PWBEH07/8G8	2.00	8.00	17	50	9.5	11.0	88.5	0.29
PWBEH10G8	3.15	12.6	20	71	13.0	13.0	121.5	0.75
PWBEH13G8	5.30	21.2	26	96	15.5	16.5	158.0	1.62



G80 HIGH TENSILE HOOK

Stock No.	W.L.L. (tons)	M.B.S. (tons)	Weight (kgs)
HTH09G8	2.50	10	0.65
HTH11G8	3.75	15	0.95
HTH13G8	5.40	21.6	1.40



New York
Tel: 1-212-717-1496
Fax: 1-212-717-1499
<http://dragonsteelproducts.com>
E-mail: sales@dragonsteelproducts.com

Qingdao
Tel: 86-532-81970686
Fax: 86-532-81970685

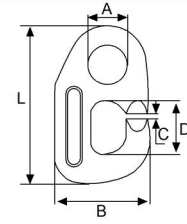
Shanghai
Tel: 86-21-54810680
Fax: 86-21-54810003

E-mail: qingdao@dragonsteelproducts.com E-mail: sho@dragonwire rope.com

HOOKS

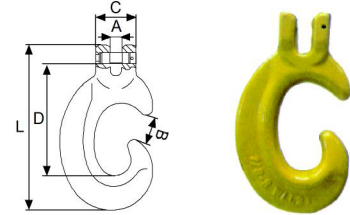
G80 FORGED "DV" HOOK

Stock No.	W.L.L. (tons)	M.B.S. (tons)	Dimensions (mm)					Weight (kgs)
			A	B	C	D	L	
FDVH1.5TG8	1.5	7.5	28	61.0	3	35	102	0.50
FDVH3.0TG8	3.0	15.0	30	72.0	3	41	119	0.73
FDVH5.0TG8	5.0	25.0	35	84.5	3	42	137	1.20
FDVH8.0TG8	8.0	40.0	42	96.0	3	42	153	1.60



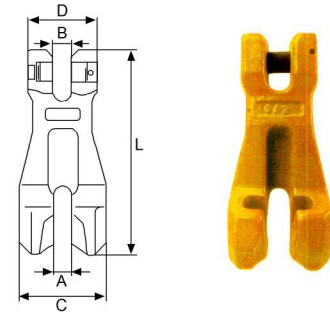
G80 SPECIAL CLEVIS "C" HOOK

Stock No.	W.L.L. (tons)	M.B.S. (tons)	Dimensions (mm)					Weight (kgs)
			A	B	C	D	L	
SPCCH7/8G8	2.00	8.0	9.5	20.0	35	90.0	136	0.57
SPCCH10G8	3.15	12.6	13.0	29.5	46	127.0	189	1.40
SPCCH13G8	5.30	21.2	16.5	39.5	59	166.5	246	3.00
SPCCH16G8	8.00	32.0	18.5	46.5	72	206.0	298	5.40



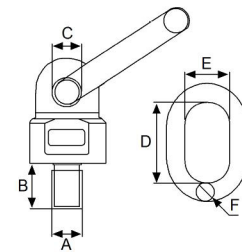
G80 CLEVIS CHAIN CLUTCH

Stock No.	W.L.L. (tons)	M.B.S. (tons)	Dimensions (mm)					Weight (kgs)
			A	B	C	D	L	
CCC06G8	1.12	4.48	7.5	7.5	33	26	73.5	0.17
CCC7/8G8	2.00	8.00	9.5	9.5	45	36	101	0.41
CCC10G8	3.15	12.60	13.0	13.0	55	48	138	0.97
CCC13G8	5.30	21.20	18.0	16.0	75	59	177	2.01
CCC16G8	8.00	32.00	21.0	21.0	93	73	220	3.32
CCC18/20G8	12.50	50.00	22.0	22.0	99	78	238	6.20
CCC22G8	15.00	60.00	25.5	25.5	118	98	295	8.50

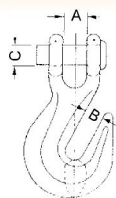


G80 MULTI-DIRECTIONAL USING LIFTING SWIVEL

Stock No.	W.L.L. (4 :1) (tons)		Dimensions (mm)					Weight (kgs)
	90°	0°	AxB	C	D	E	F	
MDULSM08G8	0.30	0.6	M8x13	15.0	55	30	13	0.41
MDULSM10G8	0.45	0.9	M10x18	15.0	55	30	13	0.43
MDULSM12G8	0.50	1.0	M12x18	15.0	55	30	13	0.44
MDULSM16G8	1.12	2.0	M16x20	15.0	55	30	13	0.46
MDULSM20G8	2.00	4.0	M20x30	19.0	70	35	16	0.96
MDULSM24G8	3.15	6.3	M24x30	22.0	85	40	18	1.45
MDULSM27G8	3.15	6.3	M27x35	22.0	85	40	18	1.51
MDULSM30G8	5.30	10.6	M30x35	23.5	85	40	20	2.17
MDULSM30BG8	8.00	11.8	M30x35	28.0	115	50	22	3.57
MDULSM36G8	8.00	11.8	M36x50	27.0	115	50	22	3.60
MDULSM39G8	8.00	11.8	M39x50	27.0	115	50	22	4.10
MDULSM42G8	10.00	15.00	M42x50	27.0	115	50	22	3.73



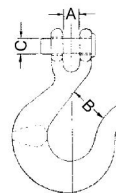
CLEVIS GRAB HOOK



Stock No.	Size Of Chain (in)	W.L.L. (lbs)		Dimensions (in)			Weight (lbs)	Weight (lbs) w/latch
		Carbon	Alloy	A	B	C		
CG014G43/G7/L	1/4	2600	3500	0.36	0.40	0.38	0.40	0.62
CG516G43/G7/L	5/16	3900	4700	0.40	0.44	0.44	0.79	0.95
CG038G43/G7/L	3/8	5400	7100	0.48	0.50	0.47	1.00	1.28
CG716G43/G7/L	7/16	7200	8750	0.66	0.56	0.56	1.50	-
CG012G43/G7/L	1/2	9200	12000	0.75	0.66	0.63	2.10	2.60
CG058G43/G7/L	5/8	13000	15800	0.91	0.78	0.75	4.20	4.67
CG034G43/G7/L	3/4	20200	24700	0.94	0.94	0.88	6.50	-

*Ultimate load is 4 times working load limit

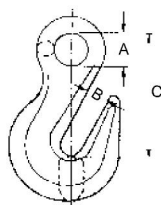
CLEVIS SLIP HOOK



Stock No.	Size Of Chain (in)	W.L.L. (lbs)		Dimensions (in)			Weight (lbs)	Weight (lbs) w/latch
		Carbon	Alloy	A	B	C		
CS014G43/G7/L	1/4	1950	2750	0.44	0.94	0.38	0.50	0.52
CS516G43/G7/L	5/16	2875	4300	0.50	1.06	0.44	0.75	0.77
CS038G43/G7/L	3/8	4000	5250	0.59	1.31	0.47	1.20	1.23
CS716G43/G7/L	7/16	5000	7000	0.66	1.56	0.56	2.06	2.10
CS012G43/G7/L	1/2	6500	9000	0.75	1.69	0.63	2.80	2.85
CS058G43/G7/L	5/8	9250	13500	0.91	2.00	0.75	4.75	5.18
CS034G43/G7/L	3/4	12500	19250	1.31	2.50	1.00	10.30	10.45

*Ultimate load is 4 times working load limit

EYE GRAB HOOK



Stock No.	Size Of Chain (in)	W.L.L. (lbs)		Dimensions (in)			Weight (lbs)
		Carbon	Alloy	A	B	C	
EG014G43/G7	1/4	2600	3500	0.50	0.34	1.97	0.28
EG516G43/G7	5/16	3900	4700	0.56	0.44	2.25	0.45
EG038G43/G7	3/8	5400	7100	0.66	0.50	2.56	0.79
EG716G43/G7	7/16	7200	8750	0.75	0.56	2.94	1.19
EG012G43/G7	1/2	9200	12000	0.88	0.66	3.38	1.80
EG058G43/G7	5/8	13000	15800	1.06	0.78	4.11	3.30
EG034G43/G7	3/4	20200	24700	1.38	0.94	5.16	6.00

*Ultimate load is 4 times working load limit



New York
Tel: 1-212-717-1496
Fax: 1-212-717-1499
<http://dragonsteelproducts.com>
E-mail: sales@dragonsteelproducts.com

Qingdao
Tel: 86-532-81970686
Fax: 86-532-81970685

E-mail: qingdao@dragonsteelproducts.com

Shanghai
Tel: 86-21-54810680
Fax: 86-21-54810003

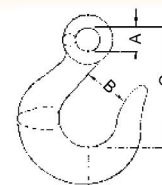
E-mail: sho@dragonwirerope.com

HOOKS

EYE SLIP HOOK

Stock No.	Size Of Chain (in)	W.L.L. (lbs)		Dimensions (in)			Weight (lbs)	Weight (lbs) w/latch
		Carbon	Alloy	A	B	C		
ES014G43/G7/L	1/4	1950	2750	0.50	0.94	2.56	0.40	0.42
ES516G43/G7/L	5/16	2875	4300	0.63	1.06	2.95	0.70	0.72
ES038G43/G7/L	3/8	4000	5250	0.72	1.31	3.36	1.00	1.03
ES716G43/G7/L	7/16	5000	7000	0.81	1.56	3.88	1.60	1.64
ES012G43/G7/L	1/2	6500	9000	0.94	1.69	4.28	2.40	2.45
ES058G43/G7/L	5/8	9250	13500	1.13	2.00	5.22	4.00	4.13
ES034G43/G7/L	3/4	12500	19250	1.38	2.14	5.80	6.50	6.76

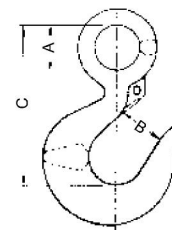
*Ultimate load is 4 times working load limit



EYE HOIST HOOK

Stock No.	Working Load Limit (tons)		Dimensions (in)			Weight (lbs)	Weight (lbs) w/latch
	Carbon	Alloy	A	B	C		
EH012/034G43/G7/L	1/2	3/4	0.63	0.87	2.80	0.35	0.37
EH034/001G43/G7/L	3/4	1	0.75	0.94	3.22	0.55	0.57
EH001/112G43/G7/L	1	1 1/2	0.91	1.03	3.66	0.75	0.77
EH112/002G43/G7/L	1 1/2	2	1.12	1.06	4.09	1.25	1.28
EH002/003G43/G7/L	2	3	1.25	1.22	4.69	1.70	1.73
EH003/005G43/G7/L	3	5	1.56	1.50	5.78	3.60	3.66
EH005/007G43/G7/L	5	7	2.00	1.88	7.38	7.08	7.19
EH712/011G43/G7/L	7 1/2	11	2.44	2.25	9.06	13.00	13.17
EH010/015G43/G7/L	10	15	2.83	2.52	10.09	22.00	22.15
EH015/022G43/G7/L	15	22	3.54	3.46	12.20	39.50	39.55

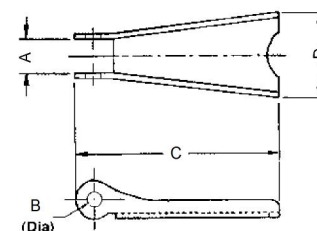
*Ultimate load is 5 times working load limit



HOOK LATCH

*Stainless steel or galvanized carbon steel

Stock No.	Hook size (tons)		Dimensions (in)				Weight (lbs)
	Carbon	Alloy	A	B	C	D	
SS/CSLATCH012/034	1/2	3/4	0.36	0.14	1.30	0.51	0.02
SS/CSLATCH034/001	3/4	1	0.41	0.14	1.48	0.59	0.02
SS/CSLATCH001/112	1	1 1/2	0.41	0.14	1.84	0.67	0.02
SS/CSLATCH112/002	1 1/2	2	0.49	0.18	1.84	0.75	0.03
SS/CSLATCH002/003	2	3	0.49	0.18	2.02	0.87	0.03
SS/CSLATCH003/412	3	4 1/2	0.63	0.18	2.41	1.00	0.06
SS/CSLATCH005/007	5	7	0.71	0.20	2.99	1.42	0.11
SS/CSLATCH712/011	7 1/2	11	0.79	0.20	3.68	1.57	0.17
SS/CSLATCH010/015	10	15	0.59	0.26	3.66	1.50	0.15
SS/CSLATCH015/020	15	20	0.87	0.39	5.13	1.88	0.29



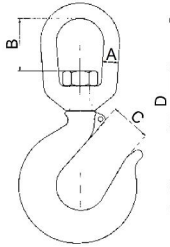
New York
Tel: 1-212-717-1496
Fax: 1-212-717-1499
<http://dragonsteelproducts.com>
E-mail: sales@dragonsteelproducts.com

Qingdao
Tel: 86-532-81970686
Fax: 86-532-81970685
E-mail: qingdao@dragonsteelproducts.com

Shanghai
Tel: 86-21-54810680
Fax: 86-21-54810003
E-mail: sho@dragonwire rope.com



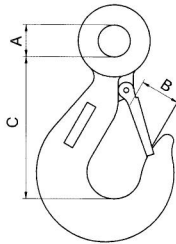
SWIVEL HOIST HOOK



Stock No.	W.L.L. (tons)		Dimensions (in)				Weight (lbs)	Weight (lbs) w/latch
	Carbon	Alloy	A	B	C	D		
SEH034/001G43/G7/L	3/4	1	3/8	15/16	15/16	4 15/32	0.75	0.77
SEH001/112G43/G7/L	1	1 1/2	1/2	1 5/16	1 1/32	5 9/32	1.25	1.27
SEH112/002G43/G7/L	1 1/2	2	5/8	1 5/8	1 1/16	6 1/64	2.25	2.28
SEH002/003G43/G7/L	2	3	5/8	1 9/16	1 7/32	6 3/8	2.57	2.60
SEH003/412G43/G7/L	3	5	3/4	1 3/4	1 1/2	7 13/32	4.75	4.81
SEH005/007G43/G7/L	5	7	1	2 5/16	1 7/8	9 19/32	10.29	10.40
SEH712/011G43/G7/L	7 1/2	11	1 1/8	2 3/8	2 1/4	11 1/8	16.25	16.42
SEH010/015G43/G7/L	10	15	1 1/4	2 13/16	2 1/2	11 15/16	23.25	23.40
SEH015/022G43/G7/L	15	22	1 1/2	4	3 2/5	16 5/16	54.25	54.90

*Ultimate load is 5 times working load limit

DIN689 EYE HOOK



Stock No.	W.L.L. (kgs)	Dimensions (mm)			Weight (kgs)
		A	B	C	
EH689LATCH0250	250	12	18	64	0.35
EH689LATCH0500	500	16	24	85	0.79
EH689LATCH1000	1000	20	33	116	1.78
EH689LATCH1600	1600	26	39	138	3.19
EH689LATCH2500	2500	32	49	174	6.49
EH689LATCH3200	3200	36	54	190	7.70
EH689LATCH4000	4000	40	62	219	12.87
EH689LATCH5000	5000	46	69	246	18.26
EH689LATCH6300	6300	52	78	277	25.74

*Ultimate load is 4 times working load limit

SORTING HOOK



Stock No.	W.L.L. At Tip (tons)	W.L.L. At Bottom (tons)	Overall Length (in)	Inside Dia Of eye (in)	Weight (lbs)
DFSORTHK2	2	7 1/2	9 11/16	1 3/8	6.25

*Ultimate load is 5 times working load limit

TRACTOR TOW HOOK



Stock No.	W.L.L. (lbs)	Opening Of Hook (mm)	Inside Length Of Top (mm)	Weight (lbs)
TRACTOWHK33	3300	12.7	38	1.63
TRACTOWHK92	9200	18.0	41	3.04



New York
Tel: 1-212-717-1496
Fax: 1-212-717-1499
<http://dragonsteelproducts.com>
E-mail: sales@dragonsteelproducts.com

Qingdao
Tel: 86-532-81970686
Fax: 86-532-81970685
E-mail: qingdao@dragonsteelproducts.com

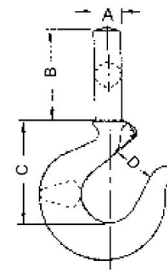
Shanghai
Tel: 86-21-54810680
Fax: 86-21-54810003
E-mail: sho@dragonwirerope.com

HOOKS

SHANK HOOK

Stock No.	W.L.L. (tons)		Dimensions (in)				Weight (lbs)	Weight (lbs) w/latch
	Carbon	Alloy	A	B	C	D		
SHANKHKC034/A010	3/4	1	0.59	2.00	2.28	0.94	0.50	0.52
SHANKHKC001/A112	1	1 1/2	0.66	2.25	2.53	1.03	0.75	0.77
SHANKHKC112/A002	1 1/2	2	0.72	2.50	2.69	1.06	1.00	1.03
SHANKHKC002/A003	2	3	0.88	2.75	3.06	1.22	1.85	1.88
SHANKHKC003/A412	3	5	1.16	3.25	3.78	1.50	3.85	3.91
SHANKHKC005/A007	5	7	1.41	3.75	4.75	1.88	7.25	7.36
SHANKHKC712/A011	7 1/2	11	1.69	4.25	5.88	2.25	13.00	13.15
SHANKHKC010/A015	10	15	1.75	4.50	6.41	2.52	19.40	19.55

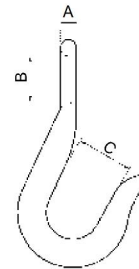
*Ultimate load is 5 times working load limit



REVERSE EYE HOOK

Stock No.	Size (in)	W.L.L. (lbs)	Dimensions (mm)			Weight (lbs)
			A	B	C	
REVERSEHK012000	1/2	300	7.2	20.6	25.0	0.40
REVERSEHK058000	5/8	400	7.9	23.9	29.2	0.60
REVERSEHK034000	3/4	700	9.7	28.4	33.9	1.10
REVERSEHK078000	7/8	1200	11.2	30.2	35.5	1.61
REVERSEHK001118	1-1 1/8	1800	15.9	38.0	44.0	2.00
REVERSEHK114138	1 1/4-1 3/8	2700	20.6	47.8	52.4	5.24

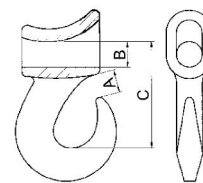
*Ultimate load is 4 times working load limit



SLIDING CHOKER HOOK

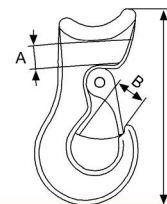
Stock No.	Size (in)	W.L.L. (lbs)	Dimensions (in)			Weight (lbs)
			A	B	C	
SLIDHK38	3/8	2500	0.63	0.63	2.59	0.92
SLIDHK12	1/2	3300	0.78	0.75	3.09	1.45
SLIDHK58	5/8	5500	0.94	0.75	3.88	3.80
SLIDHK34	3/4	8000	1.16	1.00	4.56	5.75

*Ultimate load is 5 times working load limit



SLIDING CHOKER HOOK WITH LATCH

Stock No.	W.L.L. (tons)	M.B.S. (tons)	Dimensions (mm)			Weight (lbs)
			A	B	L	
SLIDHK38/12L	1.6	8	17.0	21	132.0	1.50
SLIDHK58L	2.0	10	22.0	23	151.5	2.66
SLIDHK34L	3.0	15	28.0	29	170.0	4.38
SLIDHK10L	5.0	25	32.5	38	213.0	9.20



New York

Tel: 1-212-717-1496

Fax: 1-212-717-1499

<http://dragonsteelproducts.com>

E-mail: sales@dragonsteelproducts.com

Qingdao

Tel: 86-532-81970686

Fax: 86-532-81970685

E-mail: qingdao@dragonsteelproducts.com

Shanghai

Tel: 86-21-54810680

Fax: 86-21-54810003

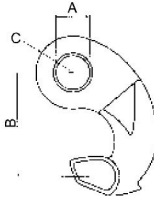
E-mail: sho@dragonwire rope.com





HOLDRITE HOOK

Stock No.	Size	Rope Dia (in)	M.B.S. (tons)	Weight (lbs)
HOLDRITE12916	Sleeve Type	1/2 - 9/16	25	1.80



BALL HOOK

Stock No.	M.B.S. (tons)	Dimensions (mm)			Weight (lbs)
		A	B	C	
DFBALLHK0200	20.0	26.2	81	28.5	3.08
DFBALLHK318A	31.8	26.9	92	30.2	5.53
DFBALLHK318B	31.8	30.2	92	30.2	5.44



FORGED SNAP HOOK

Stock No.	Size (in)	W.L.L. (lbs)	Inside Dia Of Eye (in)	Overall Length (in)	Weight (lbs)
DFSNAF716	7/16	750	0.75	3.94	0.24
DFSNAF916	9/16	1000	1.12	4.75	0.50

*Ultimate load is 4 times working load limit



WINCH HOOK

Stock No.	Size (in)	W.L.L. (lbs)	Inside Dia Of Eye (in)	Opening Of Latch (in)	Weight (lbs)
WINCHK58	5/8	6000	0.75	0.71	0.418



TRAILER HOOK

Stock No.	Size (in)	M.B.S. (lbs)	Inside Dia Of Eye (in)	Opening Of Latch (in)	Weight (lbs)
TRAILERHK34	3/4	7500	0.75	0.71	0.42



WELDED HOOK

Stock No.	Size (in)	W.L.L. (lbs)	Opening (mm)		Weight (lbs)
			width	depth	
WELDHK516	5/16	3900	31	11.0	0.42
WELDHK012	1/2	9200	44	16.5	1.89
WELDHK058	5/8	12750	51	20.6	2.71

*Ultimate load is 4 times working load limit



LOGGING CHOKER HOOK

Stock No.	Size	Rope Dia (in)	Weight (lbs)
CHOKER038	Micro Midget	3/8 - 7/16	0.75
CHOKER012	Midget	1/2 - 9/16	1.50
CHOKER916	Dwarf	9/16 - 5/8	2.00
CHOKER058	Bantam	5/8 - 3/4	3.00
CHOKER034	Light	3/4 - 1	5.00



New York
Tel: 1-212-717-1496
Fax: 1-212-717-1499
<http://dragonsteelproducts.com>
E-mail: sales@dragonsteelproducts.com

Qingdao
Tel: 86-532-81970686
Fax: 86-532-81970685
E-mail: qingdao@dragonsteelproducts.com

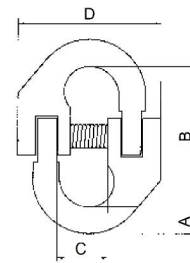
Shanghai
Tel: 86-21-54810680
Fax: 86-21-54810003
E-mail: sho@dragonwirerope.com

LINKS

CONNECTING LINK, U.S. TYPE

Stock No.	Size (in)	W.L.L. (lbs)	Dimensions (in)				Weight (lbs)
			A	B	C	D	
CLUSG8014	1/4	3500	0.35	1.85	0.68	1.81	0.28
CLUSG8516	5/16	4500	0.38	2.20	0.77	1.98	0.55
CLUSG8038	3/8	7100	0.52	2.60	0.94	2.56	0.84
CLUSG8012	1/2	12000	0.64	3.40	1.27	3.30	1.60
CLUSG8058	5/8	18100	0.75	4.13	1.48	3.65	2.86
CLUSG8034	3/4	28300	0.96	5.08	1.75	4.70	5.00
CLUSG8078	7/8	34200	1.06	5.47	2.18	5.63	7.50
CLUSG8001	1	47700	1.22	6.10	2.50	6.22	11.03
CLUSG8114	1 1/4	72300	1.50	7.99	2.76	8.12	20.39

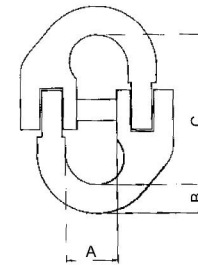
*Ultimate load is 4 times working load limit



CONNECTING LINK, EUROPEAN TYPE

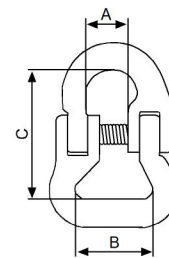
Stock No.	Size (mm)	W.L.L. (tons)	Dimensions (mm)			Weight (kgs)
			A	B	C	
CLEUG806	6	1.12	18	7.0	45	0.07
CLEUG807	7	1.60	19	8.3	52	0.10
CLEUG808	8	2.00	23	9.5	65	0.25
CLEUG810	10	3.15	27	11.5	73	0.35
CLEUG813	13	5.30	34	15.5	88	0.68
CLEUG816	16	8.00	39	19.0	103	1.10
CLEUG818	18	10.00	47	22.5	116	1.90
CLEUG820	20	12.50	47	24.0	116	2.20
CLEUG822	22	15.00	55	26.5	133	2.72
CLEUG826	26	21.20	66	29.5	148	5.05
CLEUG832	32	31.50	79	38.0	183	10.02

*Ultimate load is 4 times working load limit



WEBBING CONNECTING LINK

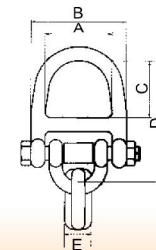
Stock No.	W.L.L. (tons)	M.B.S. (tons)	Dimensions (mm)			Weight (kgs)
			A	B	C	
WCL0600G8	1.12	4.48	15.0	40.0	56.0	0.20
WCL0708G8	2.00	8.00	20.0	40.0	63.7	0.30
WCL1000G8	3.15	12.60	24.0	49.0	83.0	0.68
WCL1300G8	5.30	21.20	28.0	55.0	93.7	1.47
WCL1600G8	8.00	32.00	34.5	65.5	120.0	2.30
WCL1820G8	12.50	50.00	41.0	80.0	138.0	3.30



CONNECTING RING

Stock No.	W.L.L. (lbs)	Dimensions (mm)					Weight (lbs)
		A	B	C	D	E	
CR15000	15000	63.5	90.5	54.0	116.8	25.4	2.31
CR30000	30000	69.9	104.7	55.6	136.5	28.7	3.79

*Ultimate load is 1.5 times working load limit



New York
Tel: 1-212-717-1496
Fax: 1-212-717-1499
<http://dragonsteelproducts.com>
E-mail: sales@dragonsteelproducts.com

Qingdao
Tel: 86-532-81970686
Fax: 86-532-81970685
E-mail: qingdao@dragonsteelproducts.com

Shanghai
Tel: 86-21-54810680
Fax: 86-21-54810003
E-mail: sho@dragonwire rope.com



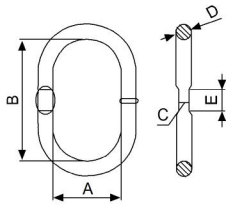
MASTER LINK



Stock No.	Size (in)	W.L.L. (lbs)	Inside Length (in)	Inside Width (in)	Weight (lbs)
ML038	3/8	3720	3.00	1.50	0.56
ML012	1/2	7000	5.00	2.50	0.89
ML058	5/8	9000	6.00	3.00	1.63
ML034	3/4	12300	5.50	2.75	2.25
ML078	7/8	15000	7.00	3.50	3.53
ML001	1	24360	7.00	3.50	5.00
ML114	1 1/4	36200	8.75	4.38	9.75
ML112	1 1/2	54300	10.50	5.25	17.12
ML134	1 3/4	84900	12.00	6.00	26.12
ML002	2	102600	14.00	7.00	38.00

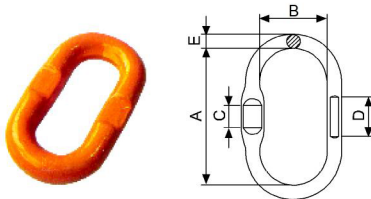
*Ultimate load is 5 times working load limit

WELDED ALLOY MASTER LINK



Stock No.	Size (in)	W.L.L. (lbs)		Dimensions (mm)					Weight (lbs)
		4 : 1	5 : 1	A	B	C	D	E	
ML0716W	7/16	3500	2800	59.9	100.1	6.1	12	21	0.62
ML0012W	1/2	6100	4900	59.9	100.1	7.6	14	21	0.84
ML1116W	11/16	8800	7100	89.9	160.0	8.5	18	21	2.12
ML0034W	3/4	14300	11500	89.9	160.0	10.4	20	21	2.65
ML0078W	7/8	18100	14500	100.1	180.1	13.5	22	21	3.59
ML0001W	1	25300	20300	100.1	180.1	16.5	25	25	4.76
ML0118W	1 1/8	26000	20800	140.0	270.0	16.5	28	25	8.47
ML0114W	1 1/4	35300	28300	140.0	270.0	18.5	32	25	13.68

FLAT ALLOY MASTER LINK



Stock No.	W.L.L. (tons)	Dimensions (mm)					Weight (lbs)
		A	B	C	D	E	
FAML058	3.12	154.0	75.6	24.5	43.5	15.9	1.52
FAML034	5.25	154.0	75.6	33.5	43.5	19.1	2.35
FAML001	8.00	181.6	90.0	40.0	69.0	25.4	4.71

WAIST LINK



Stock No.	Size (in)	M.B.S. (lbs)	Bar Dia (mm)	Inside Length (mm)	Max. Inside Width (mm)	Min. Inside Width (mm)	Weight (lbs)
WAL38	3/8	31000	19	139	59	13.6	2.03

GRAB LINK



Stock No.	Size (in)	M.B.S. (lbs)	Bar Dia (mm)	Inside Length (mm)	Max. Inside Width (mm)	Min. Inside Width (mm)	Weight (lbs)
GRL5878	5/8x7/8	44000	15.9	162	98.4	22.2	3.19
GRL0178	1x7/8	44000	25.4	162	98.4	22.2	3.22



New York
Tel: 1-212-717-1496
Fax: 1-212-717-1499
<http://dragonsteelproducts.com>
E-mail: sales@dragonsteelproducts.com

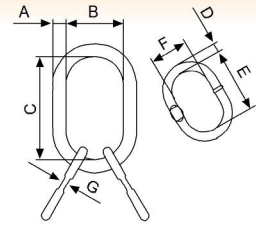
Qingdao
Tel: 86-532-81970686
Fax: 86-532-81970685
E-mail: qingdao@dragonsteelproducts.com

Shanghai
Tel: 86-21-54810680
Fax: 86-21-54810003
E-mail: sho@dragonwirerope.com

LINKS

MASTER LINK ASSEMBLY

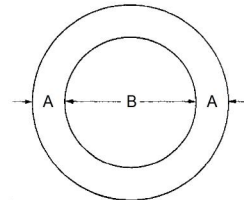
Stock No.	Size (in)	W.L.L. (lbs)	Dimensions (mm)							Weight (lbs)
			A	B	C	D	E	F	G	
MLAA058	5/8	6000	15.9	76.2	152.4	12.7	76.2	31.8	6.4	2.62
MLAA034	3/4	9100	19.1	69.9	139.7	14.2	85.1	39.9	7.6	2.95
MLAA078	7/8	14450	22.2	88.9	177.8	15.9	100.1	59.9	7.6	4.62
MLAA001	1	18400	25.4	88.9	177.8	17.5	100.1	59.9	8.4	6.34
MLAA114	1 1/4	31200	31.8	111.1	222.3	22.4	100.1	59.9	13.5	13.07
MLAA112	1 1/2	47000	38.1	133.4	266.7	28.7	150.1	70.1	16.5	23.96
MLAA134	1 3/4	73500	44.5	152.4	304.8	31.8	160.0	89.9	18.5	35.25
MLAA002	2	88900	50.8	177.8	355.6	38.1	180.1	100.1	-	56.75



*Ultimate load is 5 times working load limit

WELDLESS ROUND RING

Stock No.	Dimensions(in)		W.L.L. (lbs)	Weight (lbs)
	A	B		
DFR038002	3/8	2	2200	0.23
DFR038214	3/8	2 1/4	2200	0.26
DFR038312	3/8	3 1/2	2200	0.37
DFR012002	1/2	2	2200	0.44
DFR012003	1/2	3	2200	0.62
DFR012312	1/2	3 1/2	2200	0.71
DFR058212	5/8	2 1/2	3300	0.86
DFR058003	5/8	3	3300	1.00
DFR583516	5/8	3 5/16	3300	1.08
DFR058004	5/8	4	3300	1.28
DFR034003	3/4	3	3700	1.63
DFR034312	3/4	3 1/2	3700	1.68
DFR034004	3/4	4	3700	1.89
DFR078312	7/8	3 1/2	7200	2.34
DFR078004	7/8	4	7200	2.70
DFR078512	7/8	5 1/2	5600	3.47
DFR001004	1	4	10800	3.69
DFR001512	1	5 1/2	10800	4.54
DFR001006	1	6	10800	4.85
DFR118006	1 1/8	6	10800	6.60
DFR114005	1 1/4	5	17000	7.00
DFR114512	1 1/4	5 1/2	17000	7.41
DFR114006	1 1/4	6	17000	7.94
DFR138006	1 3/8	6	19000	10.63
DFR112008	1 1/2	8	22000	14.95
DFR112010	1 1/2	10	22000	18.08
DFR002012	2	12	25000	39.16



*Ultimate load is 5 times working load limit

New York

Tel: 1-212-717-1496

Fax: 1-212-717-1499

<http://dragonsteelproducts.com>

E-mail: sales@dragonsteelproducts.com

Qingdao

Tel: 86-532-81970686

Fax: 86-532-81970685

E-mail: qingdao@dragonsteelproducts.com

Shanghai

Tel: 86-21-54810680

Fax: 86-21-54810003

E-mail: sho@dragonwirerope.com



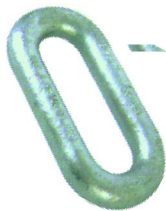
WELDLESS SLING LINK



Stock No.	Size (in)	W.L.L.(lbs)		Inside Length (in)	Inside Width (in)		Weight (lbs)
		Carbon	Alloy		Small End	Large End	
PL038G43/70	3/8	1600	-	2 1/4	3/4	1 1/2	0.23
PL012G43/70	1/2	2900	7000	3	1	2	0.55
PL058G43/70	5/8	4200	9000	3 3/4	1 1/4	2 1/2	1.10
PL034G43/70	3/4	6000	12300	4 1/2	1 1/2	3	1.95
PL078G43/70	7/8	8300	14000	5 1/4	1 3/4	3 1/2	2.78
PL001G43/70	1	10800	24360	6	2	4	4.30
PL114G43/70	1 1/4	16750	36000	7 3/4	2 1/2	5	8.50
PL138G43/70	1 3/8	20500	43000	8 1/4	2 3/4	5 1/2	11.50
PL112G43/70	1 1/2	-	54300	9	3	6	14.25
PL134G43/70	1 3/4	-	84900	10 1/2	3 1/2	7	22.50
PL002G43/70	2	-	102600	12	4	8	34.00

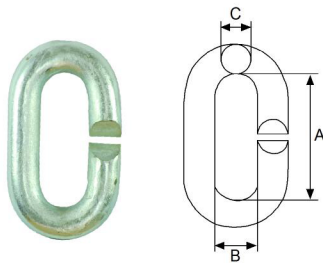
*Ultimate load is 5 times working load limit

WELDLESS END LINK



Stock No.	Dia. (in)	W.L.L. (lbs)	Inside Length (in)	Inside Width (in)	Weight (lbs)
WEL516	5/16	2500	1 3/4	1/2	0.15
WEL038	3/8	3800	1 7/8	9/16	0.23
WEL012	1/2	6500	2 3/8	3/4	0.45
WEL058	5/8	9300	3 1/4	1	0.95
WEL034	3/4	14000	3 1/2	1 1/8	1.51
WEL078	7/8	12000	5 1/8	2	2.75
WEL001	1	15200	5 3/4	2 1/4	3.95
WEL114	1 1/4	26400	7	2 1/2	7.30
WEL138	1 3/8	30000	7 3/4	2 3/4	10.38

OPENING LINK



Stock No.	W.L.L. (tons)	M.B.S. (tons)	Dimensions (mm)			Weight (kgs)
			A	B	C	
OL10A	0.2	1.0	50	16	10	0.09
OL12A	0.4	2.0	55	18	12	0.15
OL14A	0.6	3.0	60	18	14	0.23
OL16A	0.7	3.5	72	21	16	0.35
OL19A	1.4	7.0	80	24	19	0.55
OL22A	1.8	9.0	88	27	22	0.83
OL25A	2.2	11.0	94	35	25	1.18



New York
Tel: 1-212-717-1496
Fax: 1-212-717-1499
<http://dragonsteelproducts.com>
E-mail: sales@dragonsteelproducts.com

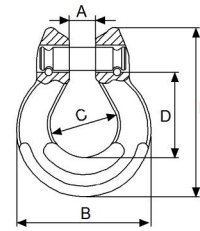
Qingdao
Tel: 86-532-81970686
Fax: 86-532-81970685
E-mail: qingdao@dragonsteelproducts.com

Shanghai
Tel: 86-21-54810680
Fax: 86-21-54810003
E-mail: sho@dragonwireurope.com

LINKS

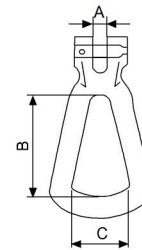
G80 OMEGA LINK

Stock No.	W.L.L. (tons)	M.B.S. (tons)	Dimensions (mm)					Weight (kgs)
			A	B	C	D	L	
OMGL06G8	1.12	4.48	8	41	20.5	25.0	52.0	0.12
OMGL7/8G8	2.00	8.00	10	52	23.5	35.0	68.5	0.22
OMGL10G8	3.15	12.60	12	62	31.5	40.5	81.5	0.36
OMGL13G8	5.30	21.20	15	81	41.0	54.0	108.0	0.71
OMGL16G8	8.00	32.00	19	99	49.5	64.0	126.0	1.30
OMGL20G8	12.50	50.00	23	118	58.0	75.6	152.0	2.20



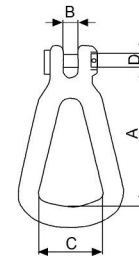
CLEVIS STYLE REEVING RING

Stock No.	Size (in)	M.B.S. (tons)	Dimensions (mm)			Weight (lbs)
			A	B	C	
CREEVING014	1/4	6	8.9	66.6	38.1	0.66
CREEVING516	5/16	10	11.4	74.9	47.0	1.12
CREEVING038	3/8	12	15.2	93.0	52.6	1.87



CLEVIS STYLE REEVING RING, EUROPEAN TYPE

Stock No.	Chain Size		W.L.L. (kgs)	Dimensions (mm)				Weight (kgs)
	(in)	(mm)		A	B	C	D	
CREEVINGEU06	1/4	6	1250	89.5	9.0	40	9	0.26
CREEVINGEU08	5/16	8	1500	106.5	10.0	46	10	0.42
CREEVINGEU10	3/8	10	2500	128.5	15.0	54	12	0.75
CREEVINGEU13	1/2	13	4000	158.0	17.3	60	16	1.31
CREEVINGEU16	5/8	16	5300	192.0	21.0	80	19	2.71
CREEVINGEU20	3/4	20	8000	235.0	24.0	100	22	5.72



EYE ELEPHANT FOOT

Stock No.	M.B.S. (tons)	Weight (lbs)
EELEPHANFT20	20	1.63
EELEPHANFT50	50	2.90



CLEVIS ELEPHANT FOOT

Stock No.	M.B.S. (tons)	Weight (lbs)
CELEPHANFT20	20	1.98

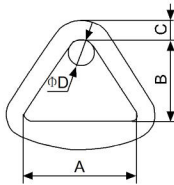


DELTA RING



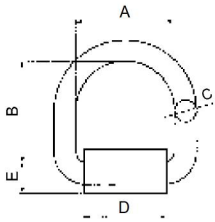
Stock No.	Size (in)	M.B.S. (lbs)	Bar Dia (mm)	Outside Length (mm)	Inside Width (mm)	Weight (lbs)
DELTA2	2	11000	12	80.3	45	0.44
DELTA3	3	18000	14	109.4	60	0.79
DELTA4	4	20000	16	142.0	74	1.37

FLAT DELTA RING



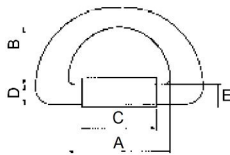
Stock No.	Size (in)	M.B.S. (lbs)	Dimensions (mm)				Weight (lbs)
			A	B	C	D	
DELTA3F	3	14400	81	85.7	17.0	35	1.63
DELTA4F	4	19200	108	101.6	22.2	50	3.15

D RING WITH STRAP, TYPE A



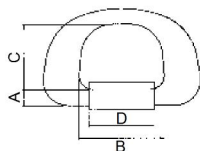
Stock No.	M.B.S. (lbs)	Dimensions (in)					Weight (lbs)
		A	B	C	D	E	
DRINGA12	12000	2.25	2.50	0.50	1.76	0.61	0.94
DRINGA18	18000	3.00	3.00	0.63	2.48	0.92	1.87
DRINGA34	26500	3.00	3.00	0.75	2.48	1.00	2.70
DRINGA1A	47000	3.00	3.00	1.00	2.52	1.21	4.21
DRINGA1B	47000	3.00	4.00	1.00	2.52	1.21	4.74

D RING WITH STRAP, TYPE B



Stock No.	M.B.S. (tons)	Dimensions (mm)					Weight (lbs)
		A	B	C	D	E	
DRINGB36	36	136	80	120	21	25.5	5.42
DRINGB41	41	144	88	125	25	30.0	8.15
DRINGB50	50	151	90	130	27	32.0	9.71

D RING WITH STRAP, TYPE C



Stock No.	M.B.S. (tons)	Dimensions (mm)				Weight (lbs)
		A	B	C	D	
DRINGC07	7	12.5	66.7	51.3	50.0	1.19
DRINGC41	41	25.4	127.0	93.0	101.6	7.71



New York
Tel: 1-212-717-1496
Fax: 1-212-717-1499
<http://dragonsteelproducts.com>
E-mail: sales@dragonsteelproducts.com

Qingdao
Tel: 86-532-81970686
Fax: 86-532-81970685
E-mail: qingdao@dragonsteelproducts.com

Shanghai
Tel: 86-21-54810680
Fax: 86-21-54810003
E-mail: sho@dragonwireurope.com

LINKS

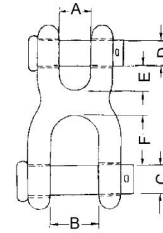
CLEVIS

Stock No.	Body Size (in)	W.L.L. (lbs)	Weight (lbs)
CLEVIS200	2	3500	1.0
CLEVIS212	2 1/2	7500	2.5
CLEVIS300	3	15000	4.0
CLEVIS312	3 1/2	18000	6.0
CLEVIS400	4	21000	8.0



DOUBLE CLEVIS LINK

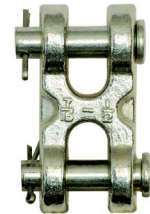
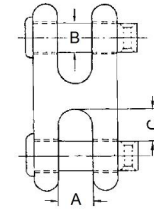
Stock No.	Size (in)	W.L.L. (lbs)	Dimensions (in)						Weight (lbs)
			A	B	C	D	E	F	
DCLG01400	1/4	2600	0.50	0.75	0.50	0.31	0.38	0.75	0.44
DCLG51638	5/16 - 3/8	5400	0.56	1.00	0.63	0.44	0.47	1.00	0.81
DCLG71600	7/16	7000	0.69	1.13	0.69	0.56	0.59	1.09	1.28
DCLG01200	1/2	9200	0.81	1.25	0.75	0.63	0.66	1.25	1.68
DCLG05800	5/8	17500	0.78	1.63	1.00	0.75	0.83	1.51	2.91



*Ultimate load is 4 times working load limit

TWIN CLEVIS LINK

Stock No.	Size (in)	W.L.L. (lbs)	Dimensions (in)			Weight (lbs)
			A	B	C	
TCLG14516	1/4 - 5/16	4700	0.47	0.38	0.43	0.32
TCLG38000	3/8	6600	0.53	0.47	0.48	0.44
TCLG71612	7/16 - 1/2	11250	0.65	0.56	0.63	1.00
TCLG58000	5/8	16500	0.78	0.69	0.75	1.32



*Ultimate load is 4 times working load limit

HOT DIP GALVANIZED DROP FORGED SWIVEL

Stock No.	Size (in)	W.L.L. (lbs)	Weight (lbs)		
			Eye/Eye	Jaw/Eye	Ring/Eye
SWHG014EE/EJ/RE	1/4	850	0.21	0.21	0.13
SWHG516EE/EJ/RE	5/16	1250	0.39	0.34	0.26
SWHG038EE/EJ/RE	3/8	2250	0.75	0.66	0.55
SWHG012EE/EJ/RE	1/2	3600	1.43	1.34	1.12
SWHG058EE/EJ/RE	5/8	5200	2.50	2.48	2.09
SWHG034EE/EJ/RE	3/4	7200	4.13	3.88	3.19
SWHG078EE/EJ/RE	7/8	10000	6.25	5.87	5.06
SWHG001EE/EJ/RE	1	12500	8.95	9.84	7.94
SWHG118EE/EJ/RE	1 1/8	16500	11.00	-	11.99
SWHG114EE/EJ/RE	1 1/4	18000	16.37	15.75	15.40
SWHG112EE/EJ/RE	1 1/2	45200	49.06	54.75	33.09



*Ultimate load is 5 times working load limit



LOAD BINDERS

ORANGE TENSIONER



Stock No.	Size (mm)	M.B.S. (tons)	Weight (lbs)
TENSION09	9	10	7.70
TENSION11	11	15	8.58
TENSION13	13	20	13.20

STANDARD LEVER TYPE LOAD BINDER



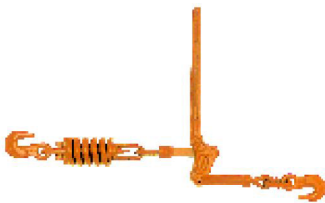
Stock No.	Chain Size (in)	W.L.L. (lbs)	M.B.S. (lbs)	Weight (lbs)
LLB00014	1/4	2600	9200	4.20
LLB51638	5/16-3/8	5400	19000	7.02
LLB03812	3/8-1/2	9200	33000	12.47
LLB01258	1/2-5/8	13000	46000	13.90

STANDARD RATCHET TYPE LOAD BINDER



Stock No.	Chain Size (in)	W.L.L. (lbs)	M.B.S. (lbs)	Weight (lbs)
RLB000014	1/4	2600	9200	3.75
RLB51638A	5/16-3/8	5400	19000	10.50
RLB51638B	5/16-3/8	6600	26000	11.23
RLB038012	3/8-1/2	9200	33000	12.90
RLB012058	1/2-5/8	13000	46000	14.55

SNUBBER SPRING LOAD BINDER



Stock No.	Chain Size (in)	W.L.L. (lbs)	M.B.S. (lbs)	Weight (lbs)
SSLB51638	5/16-3/8	5400	16200	11.25
SSLB03812	3/8-1/2	9200	30300	18.69

ANTI LOCK LOADBINDER



Stock No.	Chain Size (in)	W.L.L. (lbs)	M.B.S. (lbs)	Weight (lbs)
ATLB51638	5/16-3/8	5400	19000	8.58
ATLB03812	3/8-1/2	9200	33000	13.75



New York
Tel: 1-212-717-1496
Fax: 1-212-717-1499
<http://dragonsteelproducts.com>
E-mail: sales@dragonsteelproducts.com

Qingdao
Tel: 86-532-81970686
Fax: 86-532-81970685
E-mail: qingdao@dragonsteelproducts.com

Shanghai
Tel: 86-21-54810680
Fax: 86-21-54810003
E-mail: sho@dragonwirerope.com

TURNBUCKLES

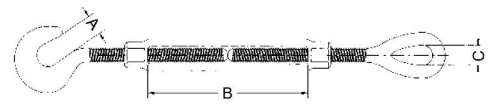
HOT DIP GALVANIZED DROP FORGED TURNBUCKLE HOOK & EYE, HOOK & HOOK

Stock No.	Thread Dia & Take Up	W.L.L. (lbs)	Weight (lbs)	Dimensions (in)		
				A	B	C
TBHG014004HE/HH	1/4 x 4'	400	0.30	0.45	4.00	0.34
TBHG516412HE/HH	5/16 x 4 1/2'	700	0.47	0.50	4.50	0.44
TBHG038006HE/HH	3/8 x 6'	1000	0.75	0.56	6.00	0.53
TBHG012006HE/HH	1/2 x 6'	1500	1.60	0.66	6.00	0.72
TBHG012009HE/HH	1/2 x 9'	1500	1.83	0.66	9.00	0.72
TBHG012012HE/HH	1/2 x 12'	1500	2.08	0.66	12.00	0.72
TBHG058006HE/HH	5/8 x 6'	2250	2.75	0.84	6.00	0.88
TBHG058009HE/HH	5/8 x 9'	2250	3.13	0.84	9.00	0.88
TBHG058012HE/HH	5/8 x 12'	2250	3.50	0.84	12.00	0.88
TBHG034006HE/HH	3/4 x 6'	3000	3.89	0.98	6.00	1.00
TBHG034009HE/HH	3/4 x 9'	3000	4.61	0.98	9.00	1.00
TBHG034012HE/HH	3/4 x 12'	3000	5.43	0.98	12.00	1.00
TBHG034018HE/HH	3/4 x 18'	3000	7.25	0.98	18.00	1.00
TBHG078012HE/HH	7/8 x 12'	4000	8.10	1.13	12.00	1.25
TBHG078018HE/HH	7/8 x 18'	4000	9.95	1.13	18.00	1.25
TBHG001006HE/HH	1 x 6'	5000	9.33	1.25	6.00	1.44
TBHG001012HE/HH	1 x 12'	5000	11.93	1.25	12.00	1.44
TBHG001018HE/HH	1 x 18'	5000	14.00	1.25	18.00	1.44
TBHG001024HE/HH	1 x 24'	5000	17.25	1.25	24.00	1.44
TBHG114012HE/HH	1 1/4 x 12'	6500	19.00	1.50	12.00	1.81
TBHG114018HE/HH	1 1/4 x 18'	6500	23.00	1.50	18.00	1.81
TBHG114024HE/HH	1 1/4 x 24'	6500	27.00	1.50	24.00	1.81
TBHG112012HE/HH	1 1/2 x 12'	7500	27.50	1.88	12.00	2.12
TBHG112018HE/HH	1 1/2 x 18'	7500	31.00	1.88	18.00	2.12
TBHG112024HE/HH	1 1/2 x 24'	7500	37.50	1.88	24.00	2.12

*Ultimate load is 5 times working load limit

DD-TURNBUCKLE SELF COLORED

Stock No.	Size (mm)	Body Length (mm)	Weight (lbs)
TBDDS20400	20	400	5.06
TBDDS22400	22	400	5.95
TBDDS24400	24	400	6.60
TBDDS24500	24	500	7.26
TBDDS27400	27	400	8.80
TBDDS27500	27	500	9.62
TBDDS30400	30	400	10.56
TBDDS30500	30	500	12.54
TBDDS36400	36	400	14.96
TBDDS36500	36	500	16.72



New York
Tel: 1-212-717-1496
Fax: 1-212-717-1499
<http://dragonsteelproducts.com>
E-mail: sales@dragonsteelproducts.com

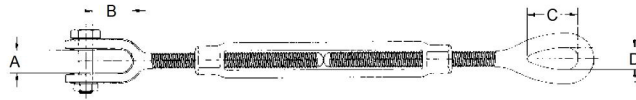
Qingdao
Tel: 86-532-81970686
Fax: 86-532-81970685
E-mail: qingdao@dragonsteelproducts.com

Shanghai
Tel: 86-21-54810680
Fax: 86-21-54810003
E-mail: sho@dragonwire rope.com



TURNBUCKLES

HOT DIP GALVANIZED DROP FORGED TURNBUCKLE EYE & EYE, JAW & EYE, JAW & JAW



Stock No.	Thread Dia & Take Up	W.L.L. (lbs)	Dimensions (in)				Weight (lbs) Eye/Eye	Weight (lbs) Jaw/Eye	Weight (lbs) Jaw/Jaw
			A	B	C	D			
TBHG014004EE/JE/JJ	1/4×4	500	0.45	0.62	0.78	0.34	0.30	0.32	0.39
TBHG516412EE/JE/JJ	5/16×4 1/2	800	0.50	0.87	0.94	0.44	0.46	0.47	0.54
TBHG038006EE/JE/JJ	3/8×6	1200	0.54	0.87	1.12	0.53	0.73	0.76	0.83
TBHG012006EE/JE/JJ	1/2×6	2200	0.63	1.06	1.44	0.72	1.46	1.53	1.57
TBHG012009EE/JE/JJ	1/2×9	2200	0.55	1.06	1.44	0.72	1.71	1.76	1.95
TBHG012012EE/JE/JJ	1/2×12	2200	0.55	1.06	1.44	0.72	2.19	2.20	2.24
TBHG058006EE/JE/JJ	5/8×6	3500	0.82	1.31	1.75	0.88	2.47	2.65	2.80
TBHG058009EE/JE/JJ	5/8×9	3500	0.82	1.31	1.75	0.88	2.90	3.06	3.35
TBHG058012EE/JE/JJ	5/8×12	3500	0.82	1.31	1.75	0.88	3.48	3.78	4.00
TBHG034006EE/JE/JJ	3/4×6	5200	1.03	1.50	2.09	1.00	3.90	4.00	4.30
TBHG034009EE/JE/JJ	3/4×9	5200	1.03	1.50	2.09	1.00	4.60	4.75	4.89
TBHG034012EE/JE/JJ	3/4×12	5200	1.03	1.50	2.09	1.00	5.46	5.76	5.90
TBHG034018EE/JE/JJ	3/4×18	5200	1.03	1.50	2.09	1.00	6.97	7.00	7.52
TBHG078006EE/JE/JJ	7/8×6	7200	1.23	1.75	2.38	1.25	5.85	6.29	6.84
TBHG078012EE/JE/JJ	7/8×12	7200	1.23	1.75	2.38	1.25	7.65	8.00	8.60
TBHG078018EE/JE/JJ	7/8×18	7200	1.23	1.75	2.38	1.25	10.25	10.60	11.44
TBHG001006EE/JE/JJ	1×6	10000	1.31	2.06	3.00	1.44	8.98	9.16	9.44
TBHG001012EE/JE/JJ	1×12	10000	1.31	2.06	3.00	1.44	11.31	11.40	11.53
TBHG001018EE/JE/JJ	1×18	10000	1.31	2.06	3.00	1.44	14.00	14.75	16.10
TBHG001024EE/JE/JJ	1×24	10000	1.31	2.06	3.00	1.44	16.02	17.50	18.60
TBHG114006EE/JE/JJ	1 1/4×6	15200	1.86	2.81	3.56	1.81	15.45	16.03	16.69
TBHG114012EE/JE/JJ	1 1/4×12	15200	1.86	2.81	3.56	1.81	19.00	20.00	23.00
TBHG114018EE/JE/JJ	1 1/4×18	15200	1.86	2.81	3.56	1.81	22.50	24.18	26.60
TBHG114024EE/JE/JJ	1 1/4×24	15200	1.86	2.81	3.56	1.81	25.00	28.50	31.20
TBHG112012EE/JE/JJ	1 1/2×12	21400	2.25	2.81	4.06	2.12	27.00	31.10	35.50
TBHG112018EE/JE/JJ	1 1/2×18	21400	2.25	2.81	4.06	2.12	31.69	35.00	40.70
TBHG112024EE/JE/JJ	1 1/2×24	21400	2.25	2.81	4.06	2.12	38.20	44.20	47.60
TBHG134018EE/JE/JJ	1 3/4×18	28000	2.60	3.38	4.62	2.38	45.20	48.80	52.40
TBHG134024EE/JE/JJ	1 3/4×24	28000	2.60	3.38	4.62	2.38	58.00	60.00	64.00
TBHG002024EE/JE/JJ	2×24	37000	2.62	3.69	5.75	2.69	81.57	102.00	115.00
TBHG212024EE/JE/JJ	2 1/2×24	60000	3.06	4.44	6.50	3.12	180.00	183.00	200.00
TBHG234024EE/JE/JJ	2 3/4×24	75000	3.68	4.19	7.00	3.25	210.00	214.00	248.00

*Ultimate load is 5 times working load limit



New York
Tel: 1-212-717-1496
Fax: 1-212-717-1499
http://dragonsteelproducts.com
E-mail:sales@dragonsteelproducts.com

Qingdao
Tel: 86-532-81970686
Fax: 86-532-81970685
E-mail:qingdao@dragonsteelproducts.com

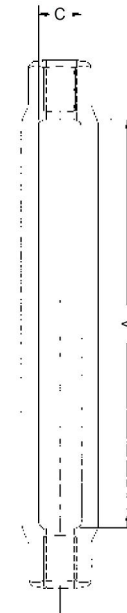
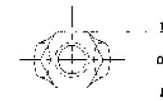
Shanghai
Tel: 86-21-54810680
Fax: 86-21-54810003
E-mail:sho@dragonwire rope.com

TURNBUCKLES

DROP FORGED TURNBUCKLE BODY ONLY

Stock No.	Size (in)	W.L.L. (lbs)	Weight (lbs)	Dimensions (in)		
				A	B	C
TBBODY014004	1/4 x 4	500	0.15	4.00	0.50	0.38
TBBODY516412	5/16 x 4 1/2	800	0.19	4.50	0.56	0.44
TBBODY038006	3/8 x 6	1200	0.29	6.00	0.62	0.50
TBBODY012006	1/2 x 6	2200	0.60	6.00	0.81	0.62
TBBODY012009	1/2 x 9	2200	0.68	9.00	0.81	0.62
TBBODY012012	1/2 x 12	2200	1.00	12.00	0.81	0.62
TBBODY058006	5/8 x 6	3500	0.90	6.00	1.00	0.75
TBBODY058009	5/8 x 9	3500	1.18	9.00	1.00	0.75
TBBODY058012	5/8 x 12	3500	1.43	12.00	1.00	0.75
TBBODY034006	3/4 x 6	5200	1.30	6.00	1.12	0.94
TBBODY034009	3/4 x 9	5200	1.75	9.00	1.12	0.94
TBBODY034012	3/4 x 12	5200	2.08	12.00	1.12	0.94
TBBODY034018	3/4 x 18	5200	2.50	18.00	1.12	0.94
TBBODY078006	7/8 x 6	7200	1.86	6.00	1.31	1.06
TBBODY078012	7/8 x 12	7200	2.70	12.00	1.31	1.06
TBBODY078018	7/8 x 18	7200	3.80	18.00	1.31	1.06
TBBODY001006	1 x 6	10000	2.48	6.00	1.50	1.25
TBBODY001012	1 x 12	10000	3.93	12.00	1.50	1.25
TBBODY001018	1 x 18	10000	5.28	18.00	1.50	1.25
TBBODY001024	1 x 24	10000	7.38	24.00	1.50	1.25
TBBODY114006	1 1/4 x 6	15200	3.90	6.00	1.88	1.50
TBBODY114012	1 1/4 x 12	15200	5.25	12.00	1.88	1.50
TBBODY114018	1 1/4 x 18	15200	7.75	18.00	1.88	1.50
TBBODY114024	1 1/4 x 24	15200	9.93	24.00	1.88	1.50
TBBODY112006	1 1/2 x 6	21400	5.80	6.00	2.25	1.75
TBBODY112012	1 1/2 x 12	21400	8.75	12.00	2.25	1.75
TBBODY112018	1 1/2 x 18	21400	11.00	18.00	2.25	1.75
TBBODY112024	1 1/2 x 24	21400	13.69	24.00	2.25	1.75
TBBODY134018	1 3/4 x 18	28000	16.38	18.00	2.62	2.12
TBBODY134024	1 3/4 x 24	28000	21.25	24.00	2.62	2.12
TBBODY002006	2 x 6	37000	12.50	6.00	3.00	2.38
TBBODY002024	2 x 24	37000	27.60	24.00	3.00	2.38
TBBODY212006	2 1/2 x 6	60000	27.00	6.00	3.88	3.12
TBBODY212024	2 1/2 x 24	60000	54.00	24.00	3.88	3.12
TBBODY234024	2 3/4 x 24	75000	54.00	24.00	3.88	3.12

*Ultimate load is 5 times working load limit



New York

Tel: 1-212-717-1496

Fax: 1-212-717-1499

<http://dragonsteelproducts.com>

E-mail: sales@dragonsteelproducts.com

Qingdao

Tel: 86-532-81970686

Fax: 86-532-81970685

E-mail: qingdao@dragonsteelproducts.com

Shanghai

Tel: 86-21-54810680

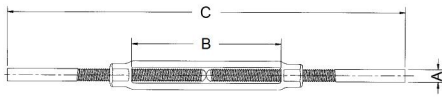
Fax: 86-21-54810003

E-mail: sho@dragonwire rope.com



TURNBUCKLES

DROP FORGED STUB END TURNBUCKLE



Stock No.	Thread Dia & Take Up	W.L.L. (lbs)	Weight (lbs)	Dimensions (in)		
				A	B	C
TBSTUBS038006	3/8 x 6	1200	0.75	0.38	6.00	16.00
TBSTUBS012006	1/2 x 6	2200	1.25	0.50	6.00	16.00
TBSTUBS058006	5/8 x 6	3500	2.11	0.63	6.00	16.00
TBSTUBS034006	3/4 x 6	5200	3.27	0.75	6.00	17.00
TBSTUBS078006	7/8 x 6	7200	4.78	0.88	6.00	18.00
TBSTUBS001006	1 x 6	10000	6.36	1.00	6.00	19.00
TBSTUBS001012	1 x 12	10000	8.80	1.00	12.00	25.00
TBSTUBS118006	1 1/8 x 6	12400	8.88	1.13	6.00	19.00
TBSTUBS114006	1 1/4 x 6	15200	10.18	1.25	6.00	20.00
TBSTUBS114012	1 1/4 x 12	15200	13.60	1.25	12.00	26.00
TBSTUBS112012	1 1/2 x 12	21400	20.44	1.50	12.00	26.50

SPLIT BODY TURNBUCKLE



Stock No.	Size (in)	Type	W.L.L. (lbs)	Weight (lbs)
SBTBEE3412	3/4 x 12	Eye & Eye	3620	5.00
SBTBJJ3412	3/4 x 12	Jaw & Jaw	3620	5.80
SBTBEE3418	3/4 x 18	Eye & Eye	3620	7.00
SBTBJJ3418	3/4 x 18	Jaw & Jaw	3620	8.57
SBTBEE7818	7/8 x 18	Eye & Eye	4500	9.46
SBTBJJ7818	7/8 x 18	Jaw & Jaw	4500	9.50
SBTBEE0112	1 x 12	Eye & Eye	6620	9.50
SBTBJJ0112	1 x 12	Jaw & Jaw	6620	10.00
SBTBEE0118	1 x 18	Eye & Eye	6620	13.00
SBTBJJ0118	1 x 18	Jaw & Jaw	6620	14.00

DIN 1480 GALVANIZED TURNBUCKLE

Hook & Eye, Eye & Eye, Hook & Hook



Stock No.	Dia of Thread (mm)	Body Length (mm)	Weight (kgs)
TB1480EG05050HE/EE/HH	5	50	0.03
TB1480EG06110HE/EE/HH	6	110	0.11
TB1480EG08110HE/EE/HH	8	110	0.15
TB1480EG10125HE/EE/HH	10	125	0.28
TB1480EG12125HE/EE/HH	12	125	0.42
TB1480EG14140HE/EE/HH	14	140	0.55
TB1480EG16170HE/EE/HH	16	170	1.00
TB1480EG20200HE/EE/HH	20	200	1.60
TB1480EG22225HE/EE/HH	22	225	2.00
TB1480EG24255HE/EE/HH	24	255	2.10
TB1480EG30255HE/EE/HH	30	255	3.90
TB1480EG33295HE/EE/HH	33	295	5.80
TB1480EG36295HE/EE/HH	36	295	7.10



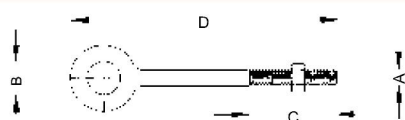
New York
Tel: 1-212-717-1496
Fax: 1-212-717-1499
<http://dragonsteelproducts.com>
E-mail: sales@dragonsteelproducts.com

Qingdao
Tel: 86-532-81970686
Fax: 86-532-81970685
E-mail: qingdao@dragonsteelproducts.com

Shanghai
Tel: 86-21-54810680
Fax: 86-21-54810003
E-mail: sho@dragonwire rope.com

EYE BOLTS

HOT DIP GALVANIZED DROP FORGED REGULAR NUT EYE BOLT



Stock No.	Shank Dia & Length (in)	Working Load Limit (lbs)	Weight per 100 (lbs)	Dimensions (in)			
				A	B	C	D
RNEBHG014002	1/4×2	500	8.20	0.25	0.50	1.50	3.06
RNEBHG014004	1/4×4	500	11.70	0.25	0.50	2.50	5.06
RNEBHG516214	5/16×2 1/4	800	13.30	0.31	0.62	1.50	3.56
RNEBHG516414	5/16×4 1/4	800	25.00	0.31	0.62	2.50	5.56
RNEBHG038212	3/8×2 1/2	1200	23.30	0.38	0.75	1.50	4.12
RNEBHG038412	3/8×4 1/2	1200	29.50	0.38	0.75	2.50	6.12
RNEBHG038006	3/8×6	1200	35.20	0.38	0.75	2.50	7.62
RNEBHG012314	1/2×3 1/4	2200	50.30	0.50	1.00	1.50	5.38
RNEBHG012006	1/2×6	2200	66.10	0.50	1.00	3.00	8.12
RNEBHG012008	1/2×8	2200	82.00	0.50	1.00	3.00	10.12
RNEBHG012010	1/2×10	2200	88.00	0.50	1.00	3.00	12.12
RNEBHG012012	1/2×12	2200	114.20	0.50	1.00	3.00	14.12
RNEBHG012015	1/2×15	2200	116.85	0.50	1.00	4.00	17.12
RNEBHG058004	5/8×4	3500	103.10	0.62	1.25	2.00	6.69
RNEBHG058006	5/8×6	3500	118.20	0.62	1.25	3.00	8.69
RNEBHG058008	5/8×8	3500	135.10	0.62	1.25	3.00	10.69
RNEBHG058010	5/8×10	3500	153.60	0.62	1.25	3.00	12.69
RNEBHG058012	5/8×12	3500	167.10	0.62	1.25	4.00	14.69
RNEBHG058015	5/8×15	3500	201.16	0.62	1.25	5.00	17.69
RNEBHG058024	5/8×24	3500	279.10	0.62	1.25	6.00	26.69
RNEBHG034412	3/4×4 1/2	5200	168.60	0.75	1.50	2.00	7.69
RNEBHG034006	3/4×6	5200	184.50	0.75	1.50	3.00	9.19
RNEBHG034008	3/4×8	5200	207.90	0.75	1.50	3.00	11.19
RNEBHG034010	3/4×10	5200	235.00	0.75	1.50	3.00	13.19
RNEBHG034012	3/4×12	5200	257.50	0.75	1.50	4.00	15.19
RNEBHG034015	3/4×15	5200	298.00	0.75	1.50	5.00	18.19
RNEBHG078005	7/8×5	7200	270.00	0.88	1.75	2.50	8.75
RNEBHG078008	7/8×8	7200	308.00	0.88	1.75	4.00	11.75
RNEBHG078012	7/8×12	7200	400.00	0.88	1.75	4.00	15.75
RNEBHG001006	1×6	10000	421.00	1.00	2.00	3.00	10.31
RNEBHG001009	1×9	10000	468.50	1.00	2.00	4.00	13.31
RNEBHG001012	1×12	10000	540.00	1.00	2.00	4.00	16.31
RNEBHG001018	1×18	10000	650.00	1.00	2.00	7.00	22.31
RNEBHG114008	1 1/4×8	15200	750.00	1.25	2.50	4.00	13.38
RNEBHG114012	1 1/4×12	15200	900.00	1.25	2.50	4.00	17.38
RNEBHG114020	1 1/4×20	15200	1210.00	1.25	2.50	6.00	25.38

*Ultimate load is 5 times working load limit

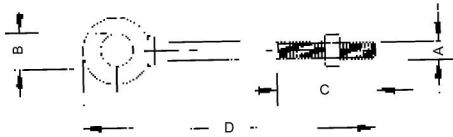
New York
Tel: 1-212-717-1496
Fax: 1-212-717-1499
<http://dragonsteelproducts.com>
E-mail: sales@dragonsteelproducts.com

Qingdao
Tel: 86-532-81970686
Fax: 86-532-81970685
E-mail: qingdao@dragonsteelproducts.com

Shanghai
Tel: 86-21-54810680
Fax: 86-21-54810003
E-mail: sho@dragonwirerope.com



HOT DIP GALVANIZED DROP FORGED SHOULDER NUT EYE BOLT



Stock No.	Shank Dia & Length (in)	W.L.L. (lbs)	Dimensions (in)				Weight per 100 (lbs)
			A	B	C	D	
SNEBHG014002	1/4 x 2'	500	0.25	0.50	1.50	2.94	6.60
SNEBHG014004	1/4 x 4'	500	0.25	0.50	2.50	4.94	9.10
SNEBHG516214	5/16 x 2' 1/4'	800	0.31	0.62	1.50	3.50	12.50
SNEBHG516414	5/16 x 4' 1/4'	800	0.31	0.62	2.50	5.50	18.80
SNEBHG038212	3/8 x 2' 1/2'	1200	0.38	0.75	1.50	3.97	21.40
SNEBHG038412	3/8 x 4' 1/2'	1200	0.38	0.75	2.50	5.97	25.30
SNEBHG012314	1/2 x 3' 1/4'	2200	0.50	1.00	1.50	5.12	42.60
SNEBHG012006	1/2 x 6'	2200	0.50	1.00	3.00	7.88	56.80
SNEBHG058004	5/8 x 4'	3500	0.62	1.25	2.00	6.44	68.60
SNEBHG058006	5/8 x 6'	3500	0.62	1.25	3.00	8.44	102.40
SNEBHG034412	3/4 x 4' 1/2'	5200	0.75	1.50	2.00	7.44	144.50
SNEBHG034006	3/4 x 6'	5200	0.75	1.50	3.00	8.94	167.50
SNEBHG078005	7/8 x 5'	7200	0.88	1.75	2.50	8.46	225.00
SNEBHG001006	1 x 6'	10000	1.00	2.00	3.00	9.97	366.30
SNEBHG001009	1 x 9'	10000	1.00	2.00	4.00	12.97	422.50
SNEBHG114008	1 1/4 x 8'	15200	1.25	2.50	4.00	12.72	650.00
SNEBHG114012	1 1/4 x 12'	15200	1.25	2.50	4.00	16.72	795.00
SNEBHG112015	1 1/2 x 15'	21400	1.50	3.00	6.00	20.75	1425.00

*Ultimate load is 5 times working load limit

HOT DIP GALVANIZED MACHINE EYE BOLT WITH SQUARE HEAD AND NUT



Stock No.	Size (in)	M.B.S. (lbs)	Weight (lbs)
MEB5808	5/8 x 8	12400	0.82
MEB5810	5/8 x 10	12400	0.89
MEB5812	5/8 x 12	12400	1.04
MEB5814	5/8 x 14	12400	1.19
MEB5816	5/8 x 16	12400	1.32
MEB5818	5/8 x 18	12400	1.47
MEB5820	5/8 x 20	12400	1.66
MEB5824	5/8 x 24	12400	2.00

ELECTRO GALVANIZED J LAG



Stock No.	Size (in)	Weight (lbs)
JLH14004R/L	1/4 x 4	0.06
JLH38412R/L	3/8 x 4-1/2	0.17
JLH12006R/L	1/2 x 6	0.37
JLH58006R/L	5/8 x 6	0.62



New York
Tel: 1-212-717-1496
Fax: 1-212-717-1499
<http://dragonsteelproducts.com>
E-mail: sales@dragonsteelproducts.com

Qingdao
Tel: 86-532-81970686
Fax: 86-532-81970685
E-mail: qingdao@dragonsteelproducts.com

Shanghai
Tel: 86-21-54810680
Fax: 86-21-54810003
E-mail: sho@dragonwirepe.com

EYE BOLTS

HOT DIP GALVANIZED THIMBLE EYE BOLT

Stock No.	Size (in)	Weight (lbs)
TEB5808	5/8 x 8	1.17
TEB5810	5/8 x 10	1.28
TEB5812	5/8 x 12	1.44
TEB5814	5/8 x 14	1.56
TEB5816	5/8 x 16	1.74
TEB5818	5/8 x 18	1.94
TEB5820	5/8 x 20	2.00
TEB5822	5/8 x 22	2.15
TEB5824	5/8 x 24	2.24
TEB5826	5/8 x 26	2.35
TEB5830	5/8 x 30	3.05
TEB5836	5/8 x 36	3.29



HOT DIP GALVANIZED THIMBLE EYE BOLT ANGLE TYPE

Stock No.	Size (in)	Weight (lbs)
TEBA5808	5/8 x 8	1.22
TEBA5810	5/8 x 10	1.32
TEBA5812	5/8 x 12	1.44
TEBA5814	5/8 x 14	1.59
TEBA5816	5/8 x 16	1.72
TEBA5818	5/8 x 18	1.86



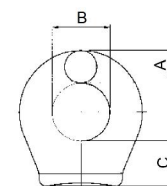
HOT DIP GALVANIZED DROP FORGED SCREW EYE BOLT

Stock No.	Size (in)	Thread Length (in)	ID Of Eye (in)	Weight (lbs)
SEBHG014002	1/4 x 2	1.50	0.88	0.043
SEBHG516214	5/16 x 2 1/4	1.69	1.13	0.063
SEBHG038212	3/8 x 2 1/2	1.88	1.38	0.188
SEBHG012314	1/2 x 3 1/4	2.44	1.75	0.375
SEBHG058004	5/8 x 4	3.00	2.25	0.688



PAD EYE

Stock No.	Item	Dimensions (mm)			Weight (lbs)
		A	B	C	
PADE1	#1	14.2	25.4	19.8	0.53
PADE2	#2	17.5	31.8	20.6	0.82



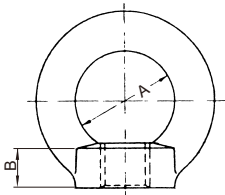
DROP FORGED SHOULDER MACHINERY EYE BOLT



Stock No.	Size (in)	W.L.L. (lbs)	Thread Length (in)	ID Of Eye (in)	Weight (lbs)
SMEBS/G014001	1/4 x 1	650	1.00	0.88	0.032
SMEBS/G516118	5/16 x 1 1/8	1200	1.13	1.12	0.062
SMEBS/G038114	3/8 x 1 1/4	1550	1.25	1.38	0.125
SMEBS/G012112	1/2 x 1 1/2	2600	1.50	1.75	0.250
SMEBS/G058134	5/8 x 1 3/4	5200	1.75	2.25	0.500
SMEBS/G034002	3/4 x 2	7200	2.00	2.75	0.875
SMEBS/G078214	7/8 x 2 1/4	10600	2.25	3.25	1.500
SMEBS/G001212	1 x 2 1/2	13300	2.50	3.75	2.180
SMEBS/G114003	1 1/4 x 3	21000	3.00	4.50	3.800
SMEBS/G112312	1 1/2 x 3 1/2	24000	3.50	5.50	7.000

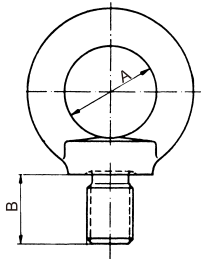
*Ultimate load is 5 times working load limit

DIN 582 RING NUT



Stock No.	Size	W.L.L. (tons)	Dimensions (mm)		Weight (kgs)
			A	B	
582E/S06	M6	0.07	20	8.5	0.05
582E/S08	M8	0.14	20	8.5	0.05
582E/S10	M10	0.23	25	10.0	0.09
582E/S12	M12	0.34	30	11.0	0.16
582E/S16	M16	0.70	35	13.0	0.24
582E/S20	M20	1.20	40	16.0	0.36
582E/S22	M22	1.50	45	18.0	0.58
582E/S24	M24	1.80	50	20.0	0.72
582E/S27	M27	2.50	50	20.0	0.70
582E/S30	M30	3.60	60	25.0	1.32
582E/S33	M33	4.30	60	25.0	1.30
582E/S36	M36	5.10	70	30.0	2.08
582E/S39	M39	6.10	70	30.0	2.02

DIN 580 EYE SCREW



Stock No.	Size	W.L.L. (tons)	Dimensions (mm)		Weight (kgs)
			A	B	
580E/S06	M6	0.07	16	13	0.05
580E/S08	M8	0.14	20	15	0.06
580E/S10	M10	0.23	25	18	0.11
580E/S12	M12	0.34	30	22	0.18
580E/S14	M14	0.49	35	28	0.27
580E/S16	M16	0.70	35	28	0.28
580E/S20	M20	1.20	40	30	0.45
580E/S22	M22	1.50	45	35	0.67
580E/S24	M24	1.80	50	38	0.87
580E/S27	M27	2.50	50	38	0.88
580E/S30	M30	3.60	60	45	1.66
580E/S33	M33	4.30	60	45	1.72
580E/S36	M36	5.10	70	55	2.65
580E/S39	M39	5.10	70	55	2.80



New York
Tel: 1-212-717-1496
Fax: 1-212-717-1499
<http://dragonsteelproducts.com>
E-mail: sales@dragonsteelproducts.com

Qingdao
Tel: 86-532-81970686
Fax: 86-532-81970685
E-mail: qingdao@dragonsteelproducts.com

Shanghai
Tel: 86-21-54810680
Fax: 86-21-54810003
E-mail: sho@dragonwirerope.com

SHACKLES

EYE NUT

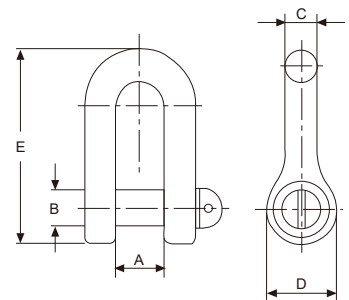
Stock No.	Std Tap Size	W.L.L. (lbs)	Stock Size	Overall Length	Weight (lbs)
ENUTHG014	1/4	520	1/4	1 11/16	0.09
ENUTHG516	5/16	850	1/4	1 11/16	0.09
ENUTHG038	3/8	1250	5/16	2 1/16	0.18
ENUTHG716	7/16	1700	3/8	2 1/2	0.29
ENUTHG012	1/2	2250	3/8	2 1/2	0.29
ENUTHG058	5/8	3600	1/2	3 3/16	0.58
ENUTHG034	3/4	5200	5/8	3 7/8	1.00
ENUTHG078	7/8	7200	3/4	4 5/16	1.70
ENUTHG001	1	10000	7/8	5	2.75
ENUTHG118	1 1/8	12300	7/8	5	2.75
ENUTHG114	1 1/4	15500	1	5 3/4	3.85
ENUTHG138	1 3/8	18500	1 1/8	6 1/4	5.00
ENUTHG112	1 1/2	22500	1 1/4	6 3/4	6.70
ENUTHG002	2	40000	1 1/2	10	18.70

*Ultimate load is 5 times working load limit



GALVANIZED DIN 82101 SHACKLE, Form A

Stock No.	W.L.L. (lbs)	Dimensions (mm)					Weight (kgs)
		A	B	C	D	E	
82101SHM05	100	7	5	5	10	28	0.013
82101SHM06	160	8	6	6	12	33	0.021
82101SHM08	250	11	8	8	16	44	0.048
82101SHM10	400	14	10	10	20	55	0.083
82101SHM12	600	17	12	12	24	66	0.156
82101SHM16	1000	21	16	15	32	88	0.330
82101SHM20	1600	27	20	19	40	110	0.710
82101SHM22	2000	30	22	21	44	121	0.940
82101SHM24	2500	33	24	23	48	132	1.350
82101SHM27	3000	38	27	26	54	150	1.890
82101SHM30	4000	42	30	29	60	165	2.530
82101SHM36	5000	47	36	33	72	198	4.000
82101SHM39	6300	53	39	37	78	215	5.100
82101SHM45	8000	60	45	41	90	248	7.920
82101SHM48	10000	66	48	45	96	264	9.870
82101SHM52	12000	73	52	50	104	286	13.68
82101SHM60	16000	81	60	55	120	330	20.23
82101SHM68	20000	90	68	61	136	374	28.72
82101SHM72	25000	100	72	67	144	396	34.00



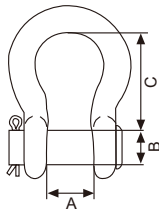
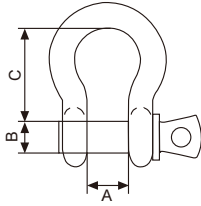
New York
Tel: 1-212-717-1496
Fax: 1-212-717-1499
<http://dragonsteelproducts.com>
E-mail: sales@dragonsteelproducts.com

Qingdao
Tel: 86-532-81970686
Fax: 86-532-81970685
E-mail: qingdao@dragonsteelproducts.com

Shanghai
Tel: 86-21-54810680
Fax: 86-21-54810003
E-mail: sho@dragonwirerope.com



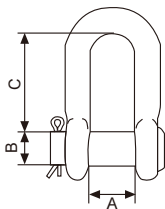
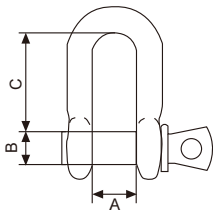
HOT DIP GALVANIZED DROP FORGED ANCHOR SHACKLE



Stock No.	Nominal Size (in)	W.L.L. (tons)	Dimensions (in)			Weight (lbs) Screw Pin Type	Weight (lbs) Round Pin Type
			A	B	C		
HGLR316SPAS/RPAS	3/16	1/3	0.38	0.25	0.88	0.06	0.06
HGLR014SPAS/RPAS	1/4	1/2	0.47	0.31	1.13	0.10	0.13
HGLR516SPAS/RPAS	5/16	3/4	0.53	0.38	1.22	0.19	0.18
HGLR038SPAS/RPAS	3/8	1	0.66	0.44	1.44	0.31	0.29
HGLR716SPAS/RPAS	7/16	1 1/2	0.75	0.50	1.69	0.38	0.38
HGLR012SPAS/RPAS	1/2	2	0.81	0.63	1.88	0.72	0.71
HGLR058SPAS/RPAS	5/8	3 1/4	1.06	0.75	2.38	1.37	1.50
HGLR034SPAS/RPAS	3/4	4 3/4	1.25	0.88	2.81	2.35	2.32
HGLR078SPAS/RPAS	7/8	6 1/2	1.44	1.00	3.31	3.62	3.49
HGLR001SPAS/RPAS	1	8 1/2	1.69	1.13	3.75	5.03	5.00
HGLR118SPAS/RPAS	1 1/8	9 1/2	1.81	1.25	4.25	7.41	6.97
HGLR114SPAS/RPAS	1 1/4	12	2.03	1.38	4.69	9.05	9.75
HGLR138SPAS/RPAS	1 3/8	13 1/2	2.25	1.50	5.25	13.53	13.25
HGLR112SPAS/RPAS	1 1/2	17	2.38	1.63	5.75	17.20	17.25
HGLR134SPAS/RPAS	1 3/4	25	2.88	2.00	7.00	27.78	29.46
HGLR002SPAS/RPAS	2	35	3.25	2.25	7.75	45.00	45.75
HGLR212SPAS/RPAS	2 1/2	55	4.13	2.75	10.50	85.75	87.12

*Ultimate load is 6 times working load limit

HOT DIP GALVANIZED DROP FORGED CHAIN SHACKLE



Stock No.	Nominal Size (in)	W.L.L. (tons)	Dimensions (in)			Weight (lbs) Screw Pin Type	Weight (lbs) Round Pin Type
			A	B	C		
HGLR014PCS/RPCS	1/4	1/2	0.47	0.31	0.88	0.11	0.11
HGLR516PCS/RPCS	5/16	3/4	0.53	0.38	1.03	0.17	0.18
HGLR038PCS/RPCS	3/8	1	0.66	0.44	1.25	0.28	0.25
HGLR716PCS/RPCS	7/16	1 1/2	0.75	0.50	1.44	0.43	0.40
HGLR012PCS/RPCS	1/2	2	0.81	0.63	1.63	0.59	0.50
HGLR058PCS/RPCS	5/8	3 1/4	1.06	0.75	2.00	1.25	1.21
HGLR034PCS/RPCS	3/4	4 3/4	1.25	0.88	2.38	2.63	2.00
HGLR078PCS/RPCS	7/8	6 1/2	1.44	1.00	2.81	3.16	3.28
HGLR001PCS/RPCS	1	8 1/2	1.69	1.13	3.19	4.75	4.75
HGLR118PCS/RPCS	1 1/8	9 1/2	1.81	1.25	3.58	6.75	6.30
HGLR114PCS/RPCS	1 1/4	12	2.03	1.38	3.94	9.06	9.00
HGLR138PCS/RPCS	1 3/8	13 1/2	2.25	1.50	4.38	11.63	12.00
HGLR112PCS/RPCS	1 1/2	17	2.38	1.63	4.81	15.95	16.15
HGLR134PCS/RPCS	1 3/4	25	2.88	2.00	5.75	26.75	29.96
HGLR002PCS/RPCS	2	35	3.25	2.25	6.75	42.31	43.25
HGLR212PCS/RPCS	2 1/2	55	4.13	2.75	8.00	71.15	73.33

*Ultimate load is 6 times working load limit



New York
Tel: 1-212-717-1496
Fax: 1-212-717-1499
<http://dragonsteelproducts.com>
E-mail: sales@dragonsteelproducts.com

Qingdao
Tel: 86-532-81970686
Fax: 86-532-81970685
E-mail: qingdao@dragonsteelproducts.com

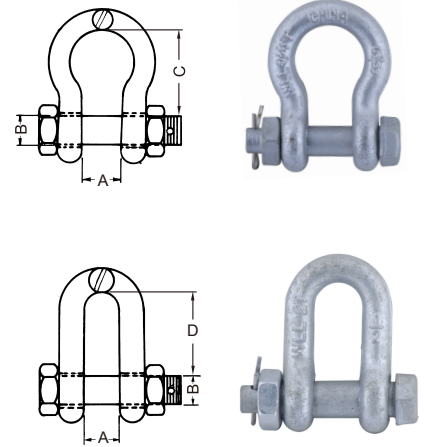
Shanghai
Tel: 86-21-54810680
Fax: 86-21-54810003
E-mail: sho@dragonwirerope.com

SHACKLES

HOT DIP GALVANIZED DROP FORGED BOLT-TYPE SHACKLE

Stock No.	Nominal Size (in)	W.L.L. (tons)	Dimensions (in)				Weight (lbs) Bow Type	Weight (lbs) Dee Type
			A	B	C	D		
HGLR012SAS/SCS	1/2	2	0.81	0.63	1.88	1.61	0.79	0.75
HGLR058SAS/SCS	5/8	3 1/4	1.06	0.75	2.38	2.00	1.68	1.47
HGLR034SAS/SCS	3/4	4 3/4	1.25	0.86	2.81	2.38	2.72	2.52
HGLR078SAS/SCS	7/8	6 1/2	1.44	1.00	3.31	2.81	3.95	3.85
HGLR001SAS/SCS	1	8 1/2	1.69	1.13	3.75	3.19	5.66	5.55
HGLR118SAS/SCS	1 1/8	9 1/2	1.81	1.25	4.25	3.58	8.27	7.60
HGLR114SAS/SCS	1 1/4	12	2.03	1.38	4.69	3.94	11.71	10.81
HGLR138SAS/SCS	1 3/8	13 1/2	2.25	1.50	5.25	4.38	15.83	13.75
HGLR112SAS/SCS	1 1/2	17	2.38	1.63	5.75	4.81	20.80	18.50
HGLR134SAS/SCS	1 3/4	25	2.88	2.00	7.00	5.75	33.91	31.40
HGLR002SAS/SCS	2	35	3.25	2.25	7.75	6.75	52.25	46.75
HGLR212SAS/SCS	2 1/2	55	4.13	2.75	10.50	8.00	98.25	85.00
HGLR003SAS/SCS	3	85	5.00	3.25	13.00	8.50	154.00	124.25

*Ultimate load is 6 times working load limit



U.S. TYPE COMMERCIAL SHACKLE

Stock No.	Nominal Size (in)	W.L.L. (kgs)	Pin Dia (in)	Weight (lbs)	
				Dee Type	Bow Type
USC316SPAS/SPCS	3/16	200	1/4	0.044	0.044
USC014SPAS/SPCS	1/4	300	5/16	0.088	0.088
USC516SPAS/SPCS	5/16	500	3/8	0.110	0.110
USC038SPAS/SPCS	3/8	750	7/16	0.265	0.265
USC716SPAS/SPCS	7/16	1000	1/2	0.415	0.418
USC012SPAS/SPCS	1/2	1500	5/8	0.436	0.440
USC058SPAS/SPCS	5/8	2000	3/4	1.317	1.320
USC034SPAS/SPCS	3/4	3000	7/8	1.896	1.915
USC078SPAS/SPCS	7/8	3500	1	3.050	3.080
USC001SPAS/SPCS	1	5000	1 1/8	4.356	4.400
USC118SPAS/SPCS	1 1/8	6000	1 1/4	6.535	6.600
USC114SPAS/SPCS	1 1/4	7500	1 3/8	8.276	8.360
USC138SPAS/SPCS	1 3/8	8500	1 1/2	11.980	12.100
USC112SPAS/SPCS	1 1/2	10500	1 3/4	16.335	16.500



HEAVY DUTY WEBBING SHACKLE

Stock No.	Pin Dia. (in)	For Strap (in)	W.L.L. (lbs)	Weight (lbs)
HDWS034	3/4	2	8000	1.60
HDWS078	7/8	4	10800	3.10
HDWS001	1	6	18000	4.80
HDWS114	1 1/4	12	24000	9.40



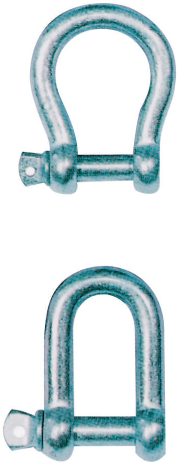
New York
Tel: 1-212-717-1496
Fax: 1-212-717-1499
<http://dragonsteelproducts.com>
E-mail: sales@dragonsteelproducts.com

Qingdao
Tel: 86-532-81970686
Fax: 86-532-81970685
E-mail: qingdao@dragonsteelproducts.com

Shanghai
Tel: 86-21-54810680
Fax: 86-21-54810003
E-mail: sho@dragonwire rope.com



EUROPEAN TYPE COMMERCIAL SHACKLE



Stock No.	Size (mm)	W.L.L. (kgs)	Inside Length (mm)	Weight (kgs)	
				Large Bow Type	Large Dee Type
EUC05SPAS/SPCS	5	80	19	0.019	0.018
EUC06SPAS/SPCS	6	100	25	0.034	0.032
EUC08SPAS/SPCS	8	200	32	0.070	0.067
EUC10SPAS/SPCS	10	320	38	0.130	0.126
EUC12SPAS/SPCS	12	520	51	0.260	0.235
EUC16SPAS/SPCS	16	800	64	0.500	0.494
EUC20SPAS/SPCS	20	1100	76	0.800	0.790
EUC22SPAS/SPCS	22	1500	89	1.300	1.280
EUC25SPAS/SPCS	25	2100	100	2.000	1.980
EUC28SPAS/SPCS	28	3000	115	3.000	2.970
EUC32SPAS/SPCS	32	4000	120	4.300	4.250
EUC38SPAS/SPCS	38	5000	148	6.800	6.730
EUC45SPAS/SPCS	45	7000	170	15.000	14.850
EUC50SPAS/SPCS	50	8000	185	16.000	15.840
EUC57SPAS/SPCS	57	10000	215	24.000	23.760
EUC63SPAS/SPCS	63	14000	245	33.000	32.670

TRAWLING CHAIN SHACKLE WITH SQUARE HEAD PIN



Stock No.	Nominal Size (in)	W.L.L. (kgs)	Dimensions (in)		Weight (lbs)
			Inside Length	Inside Width at Pin	
TRC014SSPAS/SPCS	1/4	100	7/8	15/32	0.12
TRC516SSPAS/SPCS	5/16	200	1 1/32	1/2	0.14
TRC038SSPAS/SPCS	3/8	300	1 1/4	11/16	0.26
TRC012SSPAS/SPCS	1/2	500	1 5/8	13/16	0.49
TRC058SSPAS/SPCS	5/8	800	2	1 1/16	1.10
TRC034SSPAS/SPCS	3/4	1000	2 3/8	1 1/4	2.20
TRC078SSPAS/SPCS	7/8	1500	2 13/16	1 7/16	3.28
TRC001SSPAS/SPCS	1	2000	3 23/32	1 31/32	3.96
TRC118SSPAS/SPCS	1 1/8	3000	4 5/32	2 3/16	6.16
TRC114SSPAS/SPCS	1 1/4	3500	4 23/32	2 17/32	9.46
TRC134SSPAS/SPCS	1 3/4	7000	6 11/16	3 17/32	10.0
TRC002SSPAS/SPCS	2	8000	7 9/32	3 15/16	15.0
TRC214SSPAS/SPCS	2 1/4	10000	8 15/32	4 11/32	22.0
TRC212SSPAS/SPCS	2 1/2	14000	9 21/32	4 23/32	30.0



New York
Tel: 1-212-717-1496
Fax: 1-212-717-1499
<http://dragonsteelproducts.com>
E-mail: sales@dragonsteelproducts.com

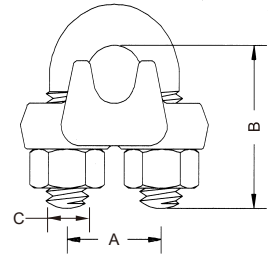
Qingdao
Tel: 86-532-81970686
Fax: 86-532-81970685
E-mail: qingdao@dragonsteelproducts.com

Shanghai
Tel: 86-21-54810680
Fax: 86-21-54810003
E-mail: sho@dragonwirerope.com

WIRE ROPE CLIPS

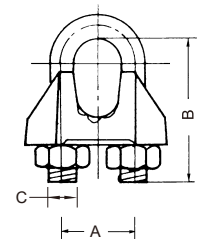
HOT DIP GALVANIZED DROP FORGED WIRE ROPE CLIP

Stock No.	Rope Size (in)	Weight Per 100 (lbs)	Dimensions (in)		
			A	B	C
DFWCHG018	1/8	6	0.47	0.72	0.22
DFWCHG316	3/16	10	0.59	0.97	0.25
DFWCHG014	1/4	20	0.75	1.03	0.31
DFWCHG516	5/16	30	0.88	1.38	0.38
DFWCHG038	3/8	47	1.00	1.50	0.44
DFWCHG716	7/16	76	1.19	1.88	0.50
DFWCHG012	1/2	80	1.19	1.88	0.50
DFWCHG916	9/16	104	1.31	2.25	0.56
DFWCHG058	5/8	106	1.31	2.38	0.56
DFWCHG034	3/4	150	1.50	2.75	0.62
DFWCHG078	7/8	212	1.75	3.12	0.75
DFWCHG001	1	260	1.88	3.50	0.75
DFWCHG118	1 1/8	290	2.00	3.88	0.75
DFWCHG114	1 1/4	430	2.31	4.25	0.88
DFWCHG138	1 3/8	460	2.38	4.63	0.88
DFWCHG112	1 1/2	540	2.59	4.94	0.88
DFWCHG158	1 5/8	700	2.75	5.31	1.00
DFWCHG134	1 3/4	925	3.06	5.75	1.13
DFWCHG002	2	1300	3.38	6.44	1.25
DFWCHG214	2 1/4	1600	3.88	7.13	1.25
DFWCHG212	2 1/2	1900	4.13	7.69	1.25



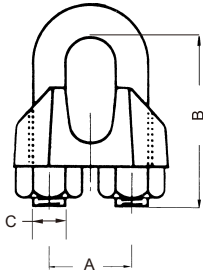
ELECTRO GALVANIZED MALLEABLE WIRE ROPE CLIP

Stock No.	Rope Size (in)	Torque in lbs (ft)	Weight Per 100 (lbs)	Dimensions (in)		
				A	B	C
MWCEG116	1/16	2	3	0.38	0.65	0.15
MWCEG018	1/8	3	4	0.50	0.81	0.18
MWCEG316	3/16	4.5	6.3	0.56	0.94	0.25
MWCEG014	1/4	15	13	0.75	1.19	0.31
MWCEG516	5/16	15	15	0.75	1.31	0.31
MWCEG038	3/8	30	21	0.88	1.63	0.38
MWCEG716	7/16	40	37	1.06	2.00	0.44
MWCEG012	1/2	45	37	1.06	2.00	0.44
MWCEG916	9/16	50	59	1.25	2.31	0.50
MWCEG058	5/8	75	59	1.25	2.31	0.50
MWCEG034	3/4	75	84	1.31	2.56	0.56
MWCEG078	7/8	130	125	1.63	3.06	0.63
MWCEG001	1	130	166	1.88	3.44	0.63
MWCEG118	1 1/8	200	243	2.00	4.00	0.75



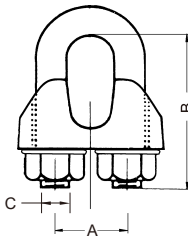
WIRE ROPE CLIPS

DIN 741 ELECTRO GALVANIZED WIRE ROPE CLIP



Stock No.	Rope Size (mm)	Weight per 100 (kgs)	Dimensions (mm)		
			A	B	C
741WCEG003	3	1.40	9	16	4
741WCEG005	5	1.50	11	19	5
741WCEG065	6.5	2.10	13	23	5
741WCEG008	8	4.10	16	28	6
741WCEG010	10	6.80	19	34	8
741WCEG011	11	7.20	20	45	8
741WCEG013	13	13.00	24	46	10
741WCEG014	14	13.50	25	47	10
741WCEG016	16	21.00	29	51	12
741WCEG019	19	28.00	32	63	12
741WCEG022	22	40.00	37	71	14
741WCEG026	26	44.00	41	81	14
741WCEG030	30	66.00	48	94	16
741WCEG034	34	85.00	52	104	16
741WCEG040	40	104.00	58	124	16
741WCEG050	50	164.00	68	152	18

DIN 1142 ELECTRO GALVANIZED WIRE ROPE CLIP



Stock No.	Rope Size (mm)	Weight per 100 (kgs)	Dimensions (mm)		
			A	B	C
1142WRYZ005	5	2.10	12	20	5
1142WRYZ065	6.5	4.00	14	26	6
1142WRYZ008	8	8.20	18	33	8
1142WRYZ010	10	9.20	20	37	8
1142WRYZ013	13	27.50	27	52	12
1142WRYZ016	16	43.00	32	62	14
1142WRYZ019	19	49.00	36	69	14
1142WRYZ022	22	68.00	40	80	16
1142WRYZ026	26	117.00	46	91	20
1142WRYZ030	30	140.00	54	107	20
1142WRYZ034	34	213.00	58	119	22
1142WRYZ040	40	268.00	68	135	24

HOT DIP GALVANIZED DROP FORGED FIST GRIP CLIP



Stock No.	Rope Size (in)	Weight (lbs)	Stock No.	Rope Size (in)	Weight (lbs)
DFC31614FG	3/16-1/4	0.180	DFC91658FG	9/16-5/8	0.998
DFC00516FG	5/16	0.279	DFC00034FG	3/4	1.746
DFC00038FG	3/8	0.399	DFC00078FG	7/8	2.245
DFC00716FG	7/16	0.699	DFC00001FG	1	2.994



New York
Tel: 1-212-717-1496
Fax: 1-212-717-1499
<http://dragonsteelproducts.com>
E-mail: sales@dragonsteelproducts.com

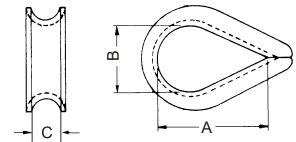
Qingdao
Tel: 86-532-81970686
Fax: 86-532-81970685
E-mail: qingdao@dragonsteelproducts.com

Shanghai
Tel: 86-21-54810680
Fax: 86-21-54810003
E-mail: sho@dragonwirerope.com

THIMBLES

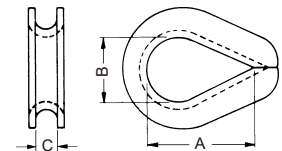
GALVANIZED STANDARD WIRE ROPE THIMBLE

Stock No.	Rope Dia (in)	Weight Per 100 (lbs)	Dimensions (in)		
			A	B	C
THLDH/G018000	1/8	3.50	1.31	0.69	0.16
THLDH/G316000	3/16	3.50	1.31	0.69	0.22
THLDH/G014000	1/4	3.50	1.31	0.69	0.28
THLDH/G516000	5/16	4.00	1.50	0.81	0.34
THLDH/G038000	3/8	6.70	1.63	0.94	0.41
THLDH/G012000	1/2	12.50	1.88	1.13	0.53
THLDH/G058000	5/8	34.50	2.25	1.38	0.66
THLDH/G034000	3/4	47.10	2.50	1.63	0.78
THLDH/G078000	7/8	84.60	3.50	1.88	0.94
THLDH/G001000	1	97.50	4.25	2.50	1.06
THLDH/G118114	1 1/8 - 1 1/4	175.00	4.50	2.75	1.31
THLDH/G138000	1 3/8	278.52	7.54	3.54	1.42
THLDH/G112000	1 1/2	313.28	8.11	4.13	1.56
THLDH/G158000	1 5/8	379.72	9.06	4.33	1.69
THLDH/G134000	1 3/4	487.96	9.59	4.33	1.81
THLDH/G178000	1 7/8	512.60	10.40	4.50	2.05
THLDH/G200000	2	616.00	10.63	4.50	2.09
THLDH/G212000	2 1/2	880.00	11.63	5.98	2.52



HOT DIP GALVANIZED HEAVY DUTY WIRE ROPE THIMBLE

Stock No.	Rope Dia (in)	Weight Per 100 (lbs)	Dimensions (in)		
			A	B	C
THHDH/G014000	1/4	6.50	1.63	0.88	0.28
THHDH/G516000	5/16	11.80	1.88	1.06	0.34
THHDH/G038000	3/8	21.60	2.13	1.13	0.41
THHDH/G716000	7/16	34.70	2.38	1.25	0.47
THHDH/G012000	1/2	51.00	2.75	1.50	0.53
THHDH/G916000	9/16	51.00	2.75	1.50	0.59
THHDH/G058000	5/8	75.70	3.25	1.75	0.66
THHDH/G034000	3/4	158.10	3.75	2.00	0.78
THHDH/G078000	7/8	177.80	4.25	2.25	0.94
THHDH/G001000	1	313.90	4.50	2.50	1.06
THHDH/G118114	1 1/8 - 1 1/4	400.00	5.13	2.88	1.31
THHDH/G114138	1 1/4 - 1 3/8	811.00	6.25	3.50	1.44
THHDH/G138112	1 3/8 - 1 1/2	1294.80	6.50	3.50	1.56
THHDH/G158000	1 5/8	1700.00	8.00	4.00	1.72
THHDH/G134000	1 3/4	1775.00	9.00	4.50	1.84
THHDH/G178002	1 7/8 - 2	2775.00	12.00	6.00	2.09
THHDH/G214000	2 1/4	3950.00	14.00	7.00	2.38
THHDH/G238000	2 3/8	4884.00	14.88	7.00	2.52
THHDH/G212000	2 1/2	6270.00	15.70	7.40	2.62
THHDH/G234000	2 3/4	6626.00	16.46	7.40	2.90
THHDH/G278000	2 7/8	7920.00	17.45	7.72	2.99
THHDH/G003000	3	8470.00	18.31	7.72	3.15
THHDH/G312000	3 1/2	9680.00	19.88	9.45	3.74



New York
Tel: 1-212-717-1496
Fax: 1-212-717-1499
<http://dragonsteelproducts.com>
E-mail: sales@dragonsteelproducts.com

Qingdao
Tel: 86-532-81970686
Fax: 86-532-81970685
E-mail: qingdao@dragonsteelproducts.com

Shanghai
Tel: 86-21-54810680
Fax: 86-21-54810003
E-mail: sho@dragonwire.com



GALVANIZED GUSSETED HEAVY DUTY WIRE ROPE THIMBLE



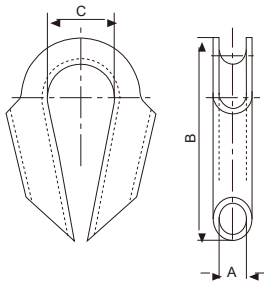
Stock No.	Rope Dia (in)	Weight Per 100 (lbs)	Rope Dia (in)	Weight Per 100 (lbs)
THGHDHG014	1/4	7.70	3/4	158.66
THGHDHG516	5/16	14.30	7/8	197.58
THGHDHG038	3/8	27.43	1	312.40
THGHDHG012	1/2	56.39	1 1/8 - 1 1/4	429.00
THGHDHG058	5/8	81.84	1 3/8 - 1 1/2	1232.00

GALVANIZED BS464 WIRE ROPE THIMBLE



Stock No.	Rope Dia (in)	Weight Per 100 (lbs)	Rope Dia (in)	Weight Per 100 (lbs)
TH464HDG08	8	7.70	22	69.00
TH464HDG09	9	8.00	25	105.00
TH464HDG11	11	12.00	29	140.00
TH464HDG12	12	16.00	32	172.00
TH464HDG14	14	16.00	36	250.00
TH464HDG16	16	32.00	38	370.00
TH464HDG17	17	39.00	41	370.00
TH464HDG19	19	57.00	44	660.00

PIPE TYPE THIMBLE



Stock No.	Rope Dia (in)	Dimensions (mm)			Weight (lbs)
		A	B	C	
PTG212	10	12	90	23	0.55
PTG215	12	15	105	27	0.92
PTG217	14	17	115	27	1.10
PTG219	16	19	120	32	1.32
PTG222	18	22	140	35	1.65
PTG225	22	25	180	45	3.08
PTG228	24	28	180	45	3.85
PTG230	26	30	195	47	4.40
PTG235	30	35	215	60	5.28
PTG240	36	40	240	65	6.82
PTG245	39	45	260	70	7.26
PTG250	44	50	280	75	8.93
PTG255	46	55	298	85	10.56
PTG260	52	60	308	88	14.52
PTG265	56	65	312	88	15.83
PTG270	62	70	332	90	17.16
PTG275	65	75	342	94	17.60



New York
Tel: 1-212-717-1496
Fax: 1-212-717-1499
<http://dragonsteelproducts.com>
E-mail: sales@dragonsteelproducts.com

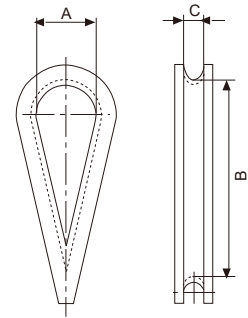
Qingdao
Tel: 86-532-81970686
Fax: 86-532-81970685
E-mail: qingdao@dragonsteelproducts.com

Shanghai
Tel: 86-21-54810680
Fax: 86-21-54810003
E-mail: sho@dragonwirerope.com

THIMBLES

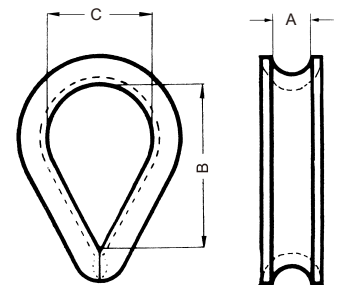
AN THIMBLE

Stock No.	Dimensions (mm)			Weight Per 100 (lbs)
	A	B	C	
THAN100G03	8.89	17.07	2.38	0.38
THAN100G04	8.89	17.86	3.57	0.40
THAN100G05	10.16	20.24	4.37	0.66
THAN100G06	12.70	25.40	5.16	0.80
THAN100G08	17.78	35.72	6.75	1.00
THAN100G10	22.86	45.64	8.33	2.00
THAN100G12	25.40	50.80	9.92	3.80



GALVANIZED DIN 6899 TYPE B THIMBLE

Stock No.	Size (mm)	Dimensions (mm)			Weight Per 100 (kgs)
		A	B	C	
TH6899BG025	2.5	3	19	12	0.50
TH6899BG035	3.5	4	21	13	0.80
TH6899BG004	4	5	23	14	1.00
TH6899BG005	5	6	25	16	1.60
TH6899BG006	6	7	28	18	1.90
TH6899BG007	7	8	32	20	3.00
TH6899BG009	9	10	38	24	4.70
TH6899BG011	11	12	45	28	6.80
TH6899BG13A	13A	13	48	30	8.00
TH6899BG13B	13B	14	51	32	10.00
TH6899BG015	15	16	58	36	14.50
TH6899BG016	16	17	61	38	18.00
TH6899BG017	17	18	64	40	20.00
TH6899BG018	18	20	72	45	29.00
TH6899BG020	20	22	80	50	32.00
TH6899BG022	22	24	90	56	47.00
TH6899BG024	24	26	99	62	59.00
TH6899BG026	26	28	112	70	80.00
TH6899BG028	28	30	120	75	110.00
TH6899BG030	30	32	128	80	123.00
TH6899BG032	32	34	152	92	156.00
TH6899BG034	34	36	160	100	176.00
TH6899BG036	36	38	176	110	192.00
TH6899BG038	38	40	184	115	292.00
TH6899BG040	40	42	192	120	320.00



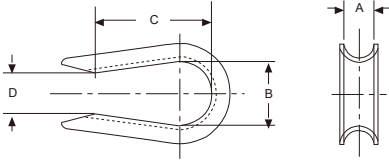
New York
Tel: 1-212-717-1496
Fax: 1-212-717-1499
<http://dragonsteelproducts.com>
E-mail: sales@dragonsteelproducts.com

Qingdao
Tel: 86-532-81970686
Fax: 86-532-81970685
E-mail: qingdao@dragonsteelproducts.com

Shanghai
Tel: 86-21-54810680
Fax: 86-21-54810003
E-mail: sho@dragonwirerope.com



OPEN PATTERN THIMBLE



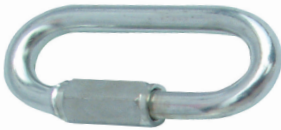
Stock No.	Rope Dia (in)	Dimensions (in)				Weight Per 100 (lbs)
		A	B	C	D	
TH014OP	1/4	0.28	0.69	1.41	0.38	3.00
TH516OP	5/16	0.34	0.81	1.53	0.50	3.80
TH038OP	3/8	0.44	0.94	1.72	0.62	7.00
TH012OP	1/2	0.53	1.12	1.47	0.75	12.50
TH058OP	5/8	0.66	1.38	2.34	1.00	25.00

DIN3091 WIRE ROPE THIMBLE



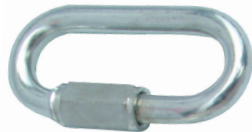
Stock No.	Size (mm)	Hole Dia (mm)	Weight (kgs)	Size (mm)	Hole Dia (mm)	Weight (kgs)
TH3091P08	8	14	0.12	22	38	2.14
TH3091P10	10	18	0.23	24	41	2.95
TH3091P12	12	21	0.36	26	44	3.49
TH3091P14	14	25	0.62	28	47	4.09
TH3091P16	16	28	0.79	32	53	5.80
TH3091P18	18	31	1.04	36	59	9.00
TH3091P20	20	35	1.51	40	65	12.74

GALVANIZED WIDE JAW QUICK LINK



Stock No.	Size (mm)	W.L.L. (lbs)	Weight Per 100 (lbs)
QL03W	3	200	1.70
QL05W	5	550	4.80
QL06W	6	770	9.10
QL08W	8	1430	21.78
QL10W	10	1760	32.80
QL12W	12	2755	60.50
QL14W	14	5200	84.70

GALVANIZED QUICK LINK



Stock No.	Size (mm)	W.L.L. (lbs)	Weight Per 100 (lbs)
QL03	3	300	1.54
QL035	3.5	400	1.76
QL04	4	500	2.64
QL05	5	660	4.40
QL06	6	880	7.70
QL07	7	1300	14.30
QL08	8	1760	17.16
QL09	9	2200	24.20
QL10	10	2640	29.70
QL11	11	2900	40.70
QL12	12	3300	55.00
QL14	14	6100	77.00
QL16	16	8100	110.00



New York
Tel: 1-212-717-1496
Fax: 1-212-717-1499
<http://dragonsteelproducts.com>
E-mail: sales@dragonsteelproducts.com

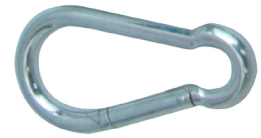
Qingdao
Tel: 86-532-81970686
Fax: 86-532-81970685
E-mail: qingdao@dragonsteelproducts.com

Shanghai
Tel: 86-21-54810680
Fax: 86-21-54810003
E-mail: sho@dragonwirerope.com

SNAP HOOKS

DIN 5299C GALVANIZED SNAP HOOK

Stock No.	Size (mm)	W.L.L. (lbs)	Weight Per 100 (lbs)
SPH04040	4x40	200	1.87
SPH05050	5x50	220	3.96
SPH06060	6x60	260	6.16
SPH07070	7x70	400	9.90
SPH08080	8x80	500	15.40
SPH09090	9x90	550	19.80
SPH10100	10x100	770	31.68
SPH11120	11x120	990	42.24
SPH12140	12x140	1200	59.40
SPH13160	13x160	1400	77.00
SPH14180	14x180	1600	110.00
SPH15200	15x200	1850	154.00



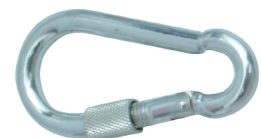
GALVANIZED SNAP HOOK WITH EYELET

Stock No.	Size (mm)	W.L.L. (lbs)	Weight Per 100 (lbs)
SPH04040E	4x40	200	1.89
SPH05050E	5x50	220	4.40
SPH06060E	6x60	260	6.60
SPH07070E	7x70	400	11.00
SPH08080E	8x80	500	16.50
SPH09090E	9x90	550	21.56
SPH10100E	10x100	770	35.20
SPH11120E	11x120	990	46.20
SPH12140E	12x140	1200	60.50
SPH13160E	13x160	1400	78.76
SPH14180E	14x180	1600	111.98
SPH15200E	15x200	1850	156.20



GALVANIZED SNAP HOOK WITH SCREW

Stock No.	Size (mm)	W.L.L. (lbs)	Weight Per 100 (lbs)
SPH05050S	5x50	220	4.40
SPH06060S	6x60	260	6.60
SPH07070S	7x70	400	11.00
SPH08080S	8x80	500	16.50
SPH09090S	9x90	550	21.56
SPH10100S	10x100	770	35.20
SPH11120S	11x120	990	46.20
SPH12140S	12x140	1200	59.40
SPH13160S	13x160	1400	79.20



New York
Tel: 1-212-717-1496
Fax: 1-212-717-1499
<http://dragonsteelproducts.com>
E-mail: sales@dragonsteelproducts.com

Qingdao
Tel: 86-532-81970686
Fax: 86-532-81970685
E-mail: qingdao@dragonsteelproducts.com

Shanghai
Tel: 86-21-54810680
Fax: 86-21-54810003
E-mail: sho@dragonwire rope.com



GALVANIZED DELTA QUICK LINK



Stock No.	Size (mm)	W.L.L. (lbs)	Weight Per 100pcs (lbs)
DQL035	3.5	200	2.02
DQL05	5	330	5.06
DQL06	6	550	8.84
DQL08	8	1210	19.74
DQL10	10	1320	34.15
DQL12	12	2425	63.25
DQL14	14	3970	88.55
DQL16	16	4850	126.50

*Square shape available

ALUMINIUM SNAP HOOK

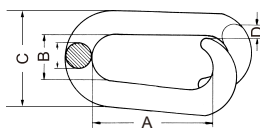


Stock No.	Size (mm)	Weight Per 100pcs (lbs)
SPH05050AL	5x50	1.10
SPH06060AL	6x60	1.98
SPH07070AL	7x70	3.52
SPH08080AL	8x80	5.50
SPH09090AL	9x90	7.26
SPH10100AL	10x100	9.68

COLD SHUT



Stock No.	Size (in)	W.L.L. (lbs)	Inside Length	Inside Width	Weight (lbs)
CS316	3/16	525	1 1/16	5/16	0.03
CS014	1/4	925	1 3/16	3/8	0.06
CS516	5/16	1450	1 7/16	13/32	0.09
CS038	3/8	2110	1 1/4	5/8	0.18
CS716	7/16	2850	1 3/8	13/16	0.26
CS012	1/2	3750	1 9/16	13/16	0.38
CS058	5/8	5850	2 1/4	3/4	0.78
CS034	3/4	8425	2 1/2	7/8	1.30
CS078	7/8	11475	3 3/8	1	2.00
CS001	1	15000	3 7/8	1 3/16	3.25



LAP LINK

Stock No.	Size (in)	Dimensions (mm)				Weight (lbs)
		A	B	C	D	
LK316001	3/16x1	25	13	23	5	0.009
LK014114	1/4x1 1/4	32	12.7	25	6	0.010
LK516112	5/16x1 1/2	38	16	32	8	0.019
LK038158	3/8x1 5/8	41	19	39	10	0.037
LK012212	1/2x2 1/2	63.5	25	50	12.5	0.070



New York
Tel: 1-212-717-1496
Fax: 1-212-717-1499
<http://dragonsteelproducts.com>
E-mail: sales@dragonsteelproducts.com

Qingdao
Tel: 86-532-81970686
Fax: 86-532-81970685
E-mail: qingdao@dragonsteelproducts.com

Shanghai
Tel: 86-21-54810680
Fax: 86-21-54810003
E-mail: sho@dragonwirerope.com

SLEEVES

STEEL FERRULE



ALUMINIUM SLEEVE, HOURGLASS TYPE

Stock No.	Size (in)	Weight Per 1000pcs (kgs)	Stock No.	Size (in)	Weight Per 1000pcs (kgs)
ALSL116H	1/16	0.41	ALSL516H	5/16	22.00
ALSL564H	5/64	0.73	ALSL038H	3/8	30.00
ALSL332H	3/32	1.45	ALSL716H	7/16	60.00
ALSL018H	1/8	2.90	ALSL012H	1/2	24.00
ALSL532H	5/32	3.63	ALSL058H	5/8	110.00
ALSL316H	3/16	7.17	ALSL078H	7/8	266.00
ALSL732H	7/32	9.50	ALSL034H	3/4	275.00
ALSL014H	1/4	10.00	ALSL001H	1	410.00
ALSL932H	9/32	20.00	-	-	-



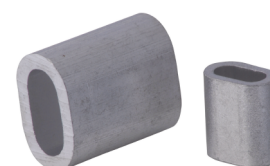
ALUMINIUM SLEEVE, ROUND TYPE

Stock No.	Size (in)	Weight Per 1000pcs (kgs)	Stock No.	Size (in)	Weight Per 1000pcs (kgs)
ALSL116R	1/16	0.35	ALSL316R	3/16	6.33
ALSL332R	3/32	1.26	ALSL014R	1/4	9.12
ALSL018R	1/8	2.50	ALSL516R	5/16	20.15
ALSL532R	5/32	3.72	ALSL038R	3/8	26.27



ALUMINIUM SLEEVE, OVAL TYPE

Stock No.	Size (mm)	Weight Per 1000pcs (kgs)	Stock No.	Size (mm)	Weight Per 1000pcs (kgs)
ALSL0150	1.5	0.21	ALSL1000	10.0	26.40
ALSL0200	2.0	0.24	ALSL1100	11.0	35.80
ALSL0250	2.5	0.49	ALSL1200	12.0	45.80
ALSL0300	3.0	0.84	ALSL1300	13.0	59.70
ALSL0350	3.5	1.32	ALSL1400	14.0	73.50
ALSL0400	4.0	1.81	ALSL1600	16.0	111.00
ALSL0450	4.5	2.61	ALSL1800	18.0	159.00
ALSL0500	5.0	3.57	ALSL2000	20.0	217.00
ALSL0600	6.0	5.88	ALSL2200	22.0	292.00
ALSL0650	6.5	7.55	ALSL2400	24.0	376.00
ALSL0700	7.0	9.53	ALSL2600	26.0	480.00
ALSL0800	8.0	12.70	ALSL2800	28.0	603.00
ALSL0900	9.0	19.80	ALSL3200	32.0	897.00



New York
Tel: 1-212-717-1496
Fax: 1-212-717-1499
<http://dragonsteelproducts.com>
E-mail: sales@dragonsteelproducts.com

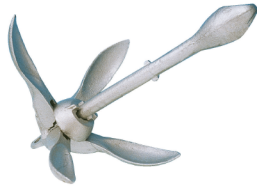
Qingdao
Tel: 86-532-81970686
Fax: 86-532-81970685
E-mail: qingdao@dragonsteelproducts.com

Shanghai
Tel: 86-21-54810680
Fax: 86-21-54810003
E-mail: sho@dragonwireurope.com



SMALL ANCHORS

GALVANIZED FOLDING ANCHOR



Type A



Type B

Stock No.	Weight (kgs)	Stock No.	Weight (kgs)
	Type A		Type B
FDA015A	1.5	FDA007B	0.7
FDA025A	2.5	FDA014B	1.4
FDA032A	3.2	FDA023B	2.3
FDA040A	4.0	FDA035B	3.5
FDA060A	6.0	FDA055B	5.5
FDA080A	8.0	FDA075B	7.5
-	-	FDA100B	10.0
-	-	FDA120B	12.0
-	-	FDA150B	15.0



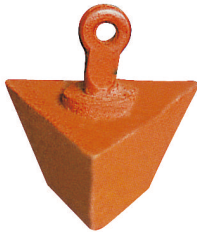
DANFORTH ANCHOR

From 1lbs to 100lbs

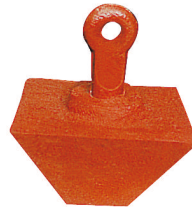
CAST MUSHROOM ANCHOR



CAST TRIANGLE ANCHOR



CAST PYRAMIDAL ANCHOR



Stock No.	Weight
TRA0025	25lbs
TRA0050	50lbs
TRA0100	100lbs
TRA0200	200lbs
TRA0300	300lbs
TRA0400	400lbs
TRA0500	500lbs
TRA0600	600lbs
TRA0800	800lbs

Stock No.	Weight
PYA0025	25lbs
PYA0050	50lbs
PYA0100	100lbs
PYA0200	200lbs
PYA0300	300lbs
PYA0400	400lbs
PYA0500	500lbs
PYA0600	600lbs
PYA0800	800lbs

Stock No.	Weight
MRA0025	25lbs
MRA0050	50lbs
MRA0075	75lbs
MRA0100	100lbs
MRA0150	150lbs
MRA0200	200lbs
MRA0250	250lbs
MRA0300	300lbs
MRA0350	350lbs
MRA0400	400lbs
MRA0600	500lbs
MRA0600	600lbs
MRA 800	800lbs
MRA1000	1000lbs
MRA2000	2000lbs



New York
Tel: 1-212-717-1496
Fax: 1-212-717-1499
<http://dragonsteelproducts.com>
E-mail: sales@dragonsteelproducts.com

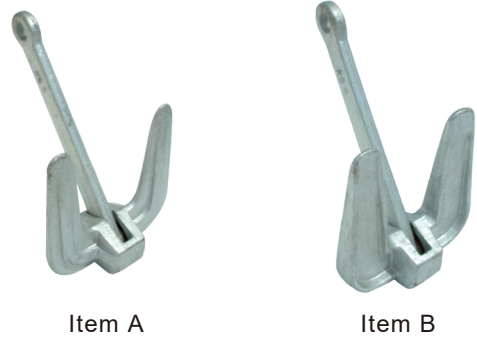
Qingdao
Tel: 86-532-81970686
Fax: 86-532-81970685
E-mail: qingdao@dragonsteelproducts.com

Shanghai
Tel: 86-21-54810680
Fax: 86-21-54810003
E-mail: sho@dragonwirerope.com

SMALL ANCHORS

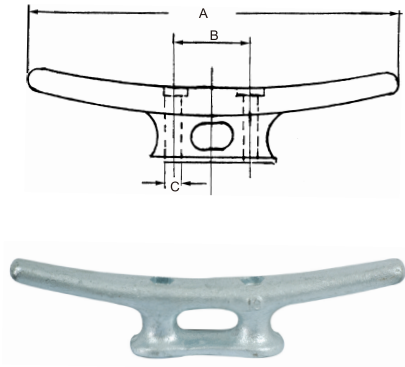
GALVANIZED HALL TYPE C ANCHOR

Stock No.	Weight (kgs)	Stock No.	Weight (kgs)
	Item A		Item B
HLCA017A	1.7	HLCA020B	2.0
HLCA021A	2.1	HLCA030B	3.0
HLCA025A	2.5	HLCA040B	4.0
HLCA028A	2.8	HLCA060B	6.0
HLCA037A	3.7	HLCA080B	8.0
HLCA040A	4.0	HLCA100B	10.0
HLCA060A	6.0	-	-
HLCA063A	6.3	-	-
HLCA080A	8.0	-	-
HLCA091A	9.1	-	-
HLCA100A	10.0	-	-
HLCA120A	12.0	-	-
HLCA150A	15.0	-	-



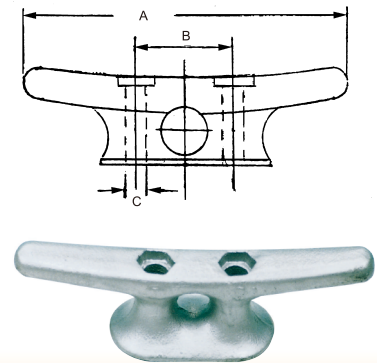
HOT DIP GALVANIZED LIGHT DUTY MALLEABLE CLEAT

Stock No.	Size (in)	Dimensions (in)			Bolt	Weight (lbs)
		A	B	C		
MCLT0312L	3 1/2	3.50	0.83	0.22	#10	0.13
MCLT0400L	4	4.00	0.91	0.26	#12	0.22
MCLT0500L	5	5.00	1.08	0.26	#12	0.33
MCLT0600L	6	5.88	1.25	0.31	1/4	0.38
MCLT0800L	8	8.00	1.63	0.38	5/16	1.00
MCLT1000L	10	10.25	2.38	0.44	3/8	2.00
MCLT1200L	12	12.25	3.83	0.44	3/8	3.60
MCLT1400L	14	14.31	4.25	0.57	1/2	5.88
MCLT1800L	18	18.00	5.38	0.69	5/8	11.00
MCLT2400L	24	24.00	6.30	0.98	7/8	33.80

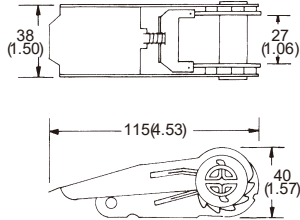
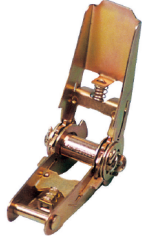


HOT DIP GALVANIZED HEAVY DUTY MALLEABLE CLEAT

Stock No.	Size (in)	Dimensions (in)			Bolt	Weight (lbs)
		A	B	C		
MCLT08H	8	8.63	2.00	0.56	1/2	3.25
MCLT10H	10	10.00	2.44	0.56	1/2	5.50
MCLT12H	12	12.00	3.38	0.75	5/8	10.00
MCLT15H	15	15.31	3.56	0.85	3/4	13.25
MCLT18H	18	18.13	3.88	0.85	3/4	20.50



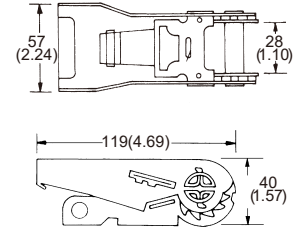
RATCHET BUCKLES



701A

1" Light Duty

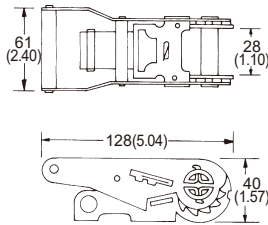
Breaking Strength: 800kgs/1760lbs



701C-011

1" One Piece Wide Handle

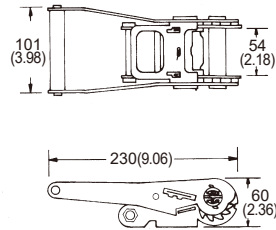
Breaking Strength: 1,500kgs/3,300lbs



701E-011

1" Wide Handle

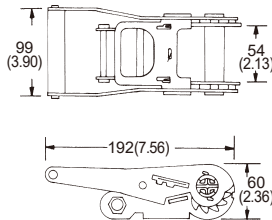
Breaking Strength: 1,500kgs/3,300lbs



703AP-011

2" Long Handle, Double Security Lock

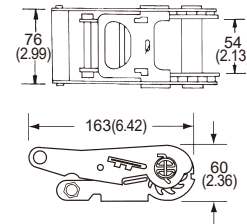
Breaking Strength: 5,000kgs/11,000lbs
6,000kgs/13,200lbs



703BP-011

2" Medium Handle,
Double Security Lock

Breaking Strength: 5,000kgs/11,000lbs
6,000kgs/13,200lbs



703CP-011

2" Short Handle, Double Security Lock

Breaking Strength: 5,000kgs/11,000lbs
6,000kgs/13,200lbs

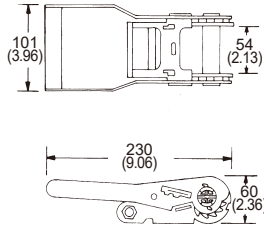


New York
Tel: 1-212-717-1496
Fax: 1-212-717-1499
<http://dragonsteelproducts.com>
E-mail: sales@dragonsteelproducts.com

Qingdao
Tel: 86-532-81970686
Fax: 86-532-81970685
E-mail: qingdao@dragonsteelproducts.com

Shanghai
Tel: 86-21-54810680
Fax: 86-21-54810003
E-mail: sho@dragonwirerope.com

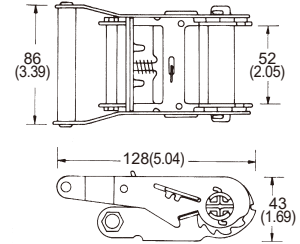
RATCHET BUCKLES



703AP-021

2" One Piece Long Handle,
Double Security Lock

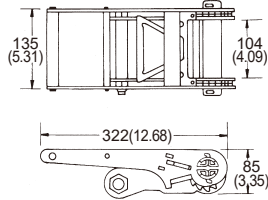
Breaking Strength: 5,000kgs/11,000lbs
6,000kgs/13,200lbs



703EW

2" Wide Handle, Light Duty

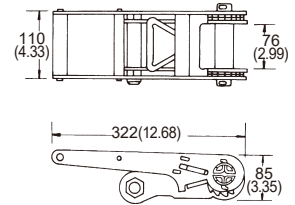
Breaking Strength: 2,000kgs/4,400lbs
703EW-3T: Breaking Strength: 3,000kgs/6,600lbs



704A

4" Long Handle

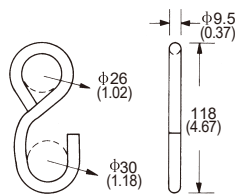
Breaking Strength: 10,896kgs/24,000lbs



704P

3" Long Handle

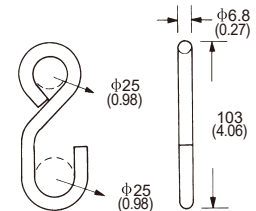
Breaking Strength: 10,000kgs/22,000lbs



Y-1816

1" S Hook

Breaking Strength: 1,100kgs/2,500lbs



Y-1817

1" S Hook

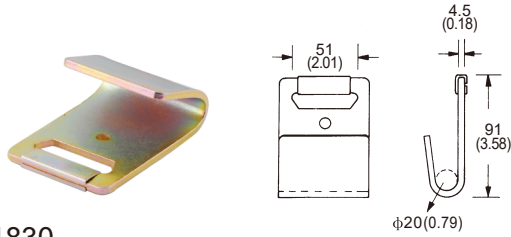
Breaking Strength: 340kgs/750lbs

New York
Tel: 1-212-717-1496
Fax: 1-212-717-1499
<http://dragonsteelproducts.com>
E-mail: sales@dragonsteelproducts.com

Qingdao
Tel: 86-532-81970686
Fax: 86-532-81970685
E-mail: qingdao@dragonsteelproducts.com

Shanghai
Tel: 86-21-54810680
Fax: 86-21-54810003
E-mail: sho@dragonwirerope.com

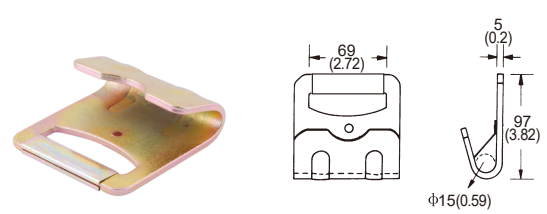




Y-1830

2" Flat Hook

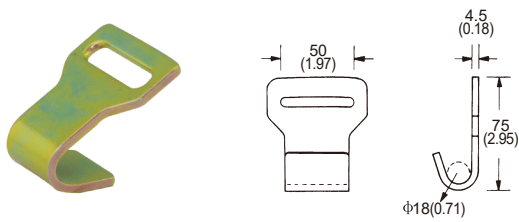
Breaking Strength: 4,540kgs/10,000lbs
 Y-1830-D: With Defender; Y-1830-K: With Keeper
 Y-1830-DK: With Defender+Keeper



Y-1831

4" Flat Hook

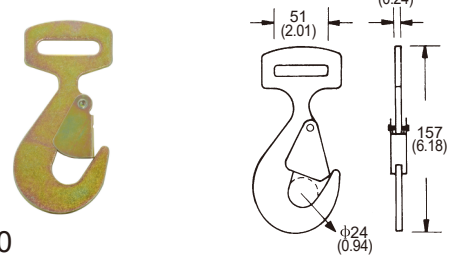
Breaking Strength: 6,800kgs/15,000lbs
 Y-1830-D: With Defender; Y-1831-K: With Keeper
 Y-1830-DK: With Defender+Keeper



Y-1832

2" Flat Hook

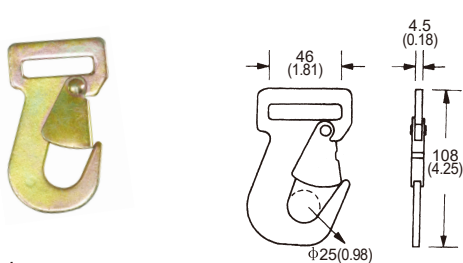
Breaking Strength: 2,270kgs/5,000lbs



Y-1840

2" Snap Hook

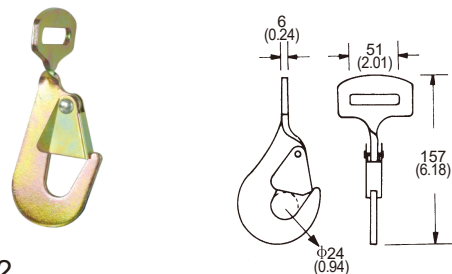
Breaking Strength: 5,000kgs/11,000lbs



Y-1841

2" Flat Snap Hook

Breaking Strength: 2,724kgs/6,000lbs



Y-1842

2" Twisted Snap Hook

Breaking Strength: 5,000kgs/11,000lbs

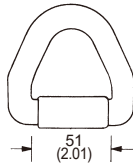


New York
 Tel: 1-212-717-1496
 Fax: 1-212-717-1499
<http://dragonsteelproducts.com>
 E-mail: sales@dragonsteelproducts.com

Qingdao
 Tel: 86-532-81970686
 Fax: 86-532-81970685
 E-mail: qingdao@dragonsteelproducts.com

Shanghai
 Tel: 86-21-54810680
 Fax: 86-21-54810003
 E-mail: sho@dragonwirerope.com

METAL HOOKS



Y-1853

2" Metal Delta Ring

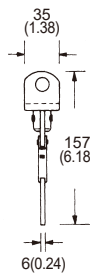
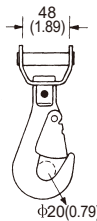
Breaking Strength: 5,000kgs/11,000lbs
Y-1853-ND: Without Defender



SLFH01S

Single Security Lanyard Forged Hook

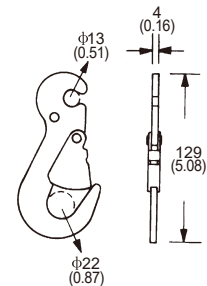
Breaking Strength: 4,540kgs/10,000lbs
Weight: 0.59lbs



Y-1857

1 3/4" Swivel Snap Hook

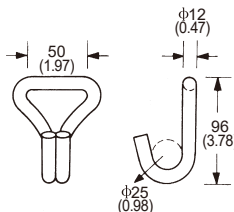
Breaking Strength: 3,178kgs/7,000lbs



Y-1856

Conversion Snap Hook

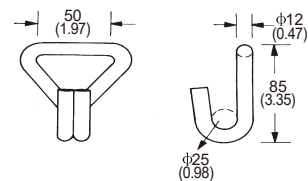
Breaking Strength: 3,000kgs/6,600lbs



Y-1820B

2" Double J Hook

Breaking Strength: 5,000kgs/11,000lbs



Y-1820A

2" Double J Hook

Breaking Strength: 5,000kgs/11,000lbs



METAL HOOKS



Y-1861

Double Security Lanyard Forged Hook

Breaking Strength: 2,270kgs/5,000lbs

Weight: 0.64lbs



SLFH01D

Double Security Lanyard Forged Hook

Breaking Strength: 2,270kgs/5,000lbs

Weight: 0.71lbs



SLFH02D

Double Security Lanyard Forged Hook

Breaking Strength: 2,270kgs/5,000lbs

Weight: 1.58lbs



SLFH03D

Double Security Lanyard Forged Hook

Breaking Strength: 2,270kgs/5,000lbs

Weight: 1.12lbs



SLFH04D

Double Security Lanyard Forged Hook

Breaking Strength: 2,270kgs/5,000lbs

Weight: 0.66lbs



SLFH05D

Double Security Lanyard Forged Hook

Breaking Strength: 2,270kgs/5,000lbs

Weight: 1.21lbs



New York

Tel: 1-212-717-1496

Fax: 1-212-717-1499

<http://dragonsteelproducts.com>

E-mail: sales@dragonsteelproducts.com

Qingdao

Tel: 86-532-81970686

Fax: 86-532-81970685

E-mail: qingdao@dragonsteelproducts.com

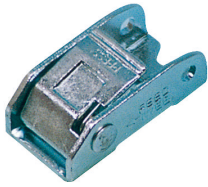
Shanghai

Tel: 86-21-54810680

Fax: 86-21-54810003

E-mail: sho@dragonwirerope.com

CAM BUCKLES



64
(2.52)

28
(1.10)

29
(1.14)

Y-1823

1" Cam Buckle

Breaking Strength: 680kgs/1,500lbs



45
(1.77)

25
(0.98)

18
(0.71)

Y-1824

1" Cam Buckle

Breaking Strength: 250kgs/550lbs



52
(2.05)

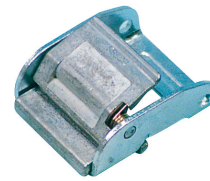
26
(1.02)

22
(0.87)

Y-1824C

1" Cam Buckle

Breaking Strength: 350kgs/770lbs



74
(2.91)

54
(2.13)

35
(1.38)

Y-1825A

2" Cam Buckle

Breaking Strength: 1,360kgs/3,000lbs

WINCH BAR



Y-709 Winch Bar

Y-709A Combination Bar

New York
Tel: 1-212-717-1496
Fax: 1-212-717-1499
<http://dragonsteelproducts.com>
E-mail: sales@dragonsteelproducts.com

Qingdao
Tel: 86-532-81970686
Fax: 86-532-81970685
E-mail: qingdao@dragonsteelproducts.com

Shanghai
Tel: 86-21-54810680
Fax: 86-21-54810003
E-mail: sho@dragonwirerope.com



WINCHES



WINCHES01



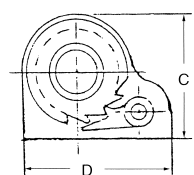
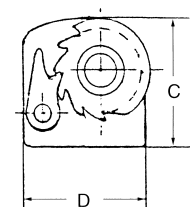
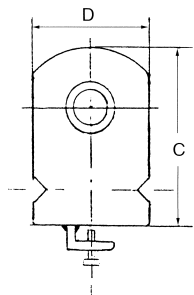
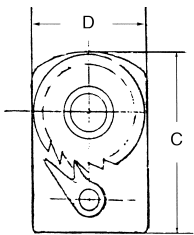
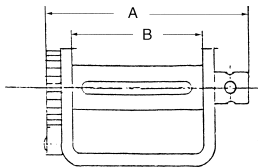
WINCHES02



WINCHES04



WINCHES12



Stock No.	Items	Dimensions (in)				Weight (lbs)
		A	B	C	D	
WINCHES01	Standard Weld-On Webbing Winch	8 1/8	4 7/8	5 1/2	3 1/2	8.40
WINCHES02	Standard Sliding Webbing Winch	8 1/8	5	5 3/16	4	8.00
WINCHES03	Standard Portable Webbing Winch	8 1/8	4 7/8	5 1/2	3 1/2	9.10
WINCHES04	Standard Portable Webbing Winch with One Set Screw	8 1/8	4 7/8	5 1/2	3 1/2	9.40
WINCHES05	Standard Portable Webbing Winch	8 1/8	4 7/8	5 1/2	3 1/2	9.60
WINCHES06	Storable Weld-On Webbing Winch	8 1/8	4 7/8	6 1/2	3 1/2	9.60
WINCHES07	Low Profile Sliding Webbing Winch	11	7 3/4	6	4	12.30
WINCHES08	Standard Sliding Webbing Winch	8 1/8	4 7/8	6	4	9.10
WINCHES09	Storable Disc Webbing Winch for 2" Webbing	6 1/2	3 3/8	8 3/4	3 1/2	10.90
WINCHES10	Storable Sliding Webbing Winch	8 1/8	4 7/8	7 1/2	4	10.50
WINCHES11	Storable Disc Webbing Winch for 3" Webbing	7 1/2	4 7/8	8 3/4	3 1/2	11.30
WINCHES12	Low Profile Weld-On Webbing Winch	8 1/8	4 7/8	3 7/8	4	7.40
WINCHES13	Low Profile Portable Webbing Winch (Bracket Only)	8 1/8	4 7/8	3 7/8	4	8.20
WINCHES14	Low Profile Portable Webbing Winch	8 1/8	4 7/8	3 7/8	4	8.30
WINCHES15	Low Profile Portable Webbing Winch With 2 Set Screws	8 1/8	4 7/8	3 7/8	4	8.50
WINCHES16	Storable Disc Webbing Winch For 4" Webbing	8 1/8	4 7/8	8 3/4	3 1/2	11.70
WINCHES17	Standard Weld-On Cable Winch With 1/2" Diameter Post/Hole	8 1/8	4 7/8	5 1/2	3 1/2	8.70
WINCHES18	Leg Bracket Winches (Webbing Only)	8 1/8	4 7/8	3 7/8	4 7/8	6.50
WINCHES19	Leg Bracket Winches (Webbing or Cable)	9 3/8	6 5/8	3 7/8	4 7/8	7.30
WINCHES20	Box Winches (Webbing Only)	8 3/4	7 1/2	5 3/8	4	12.00
WINCHES21	Box Winches (Webbing or Cable)	10 5/8	9 3/8	5 3/8	4	12.50
WINCHES22	Low Profile Weld-On Combination Webbing & Cable Winch	9 3/8	6 1/2	4 5/16	4	9.30
WINCHES23	Standard Weld-On Combination Webbing & Cable Winch	9 3/8	6 1/2	5 3/8	3 1/2	9.80
WINCHES24	Low Profile 3 Bar Winch	10 1/8	6 1/2	5 3/8	4	11.80
WINCHES25	Standard 3 Bar Winch	10 1/8	6 1/2	5 3/8	3 1/2	11.80

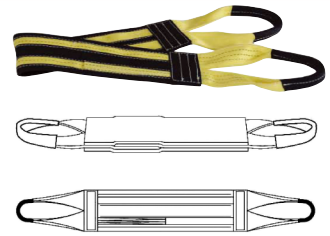
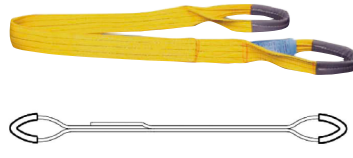
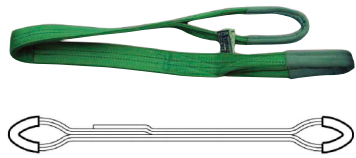


New York
 Tel: 1-212-717-1496
 Fax: 1-212-717-1499
<http://dragonsteelproducts.com>
 E-mail: sales@dragonsteelproducts.com

Qingdao
 Tel: 86-532-81970686
 Fax: 86-532-81970685
 E-mail: qingdao@dragonsteelproducts.com

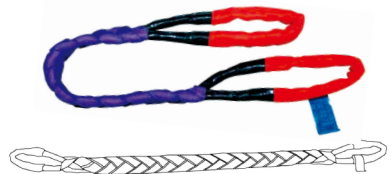
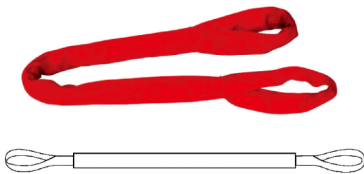
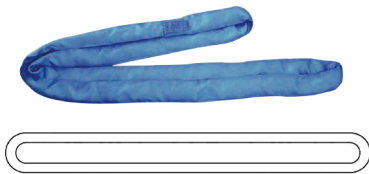
Shanghai
 Tel: 86-21-54810680
 Fax: 86-21-54810003
 E-mail: sho@dragonwirerope.com

WEBBING SLINGS



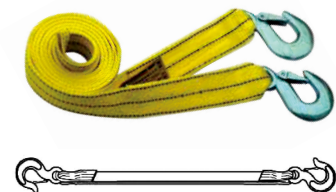
Specifications available upon request.

ROUND SLINGS



Specifications available upon request.

TOW STRAPS



Specifications available upon request.

New York
Tel: 1-212-717-1496
Fax: 1-212-717-1499
<http://dragonsteelproducts.com>
E-mail: sales@dragonsteelproducts.com

Qingdao
Tel: 86-532-81970686
Fax: 86-532-81970685
E-mail: qingdao@dragonsteelproducts.com

Shanghai
Tel: 86-21-54810680
Fax: 86-21-54810003
E-mail: sho@dragonwirerope.com



RATCHET STRAPS



Description	W.L.L. (lbs)	B.S. (lbs)
1" Ratchet Strap	700	2100
2" Ratchet Strap	3300	10000
3" Ratchet Strap	5000	15000
4" Ratchet Strap	5000	15000

Normal Lengths are 27 or 30 feet. Custom lengths available.
Most common end fittings are flat hooks and wire hooks.
Other end fittings available.
Further product information available upon request.

WINCH STRAPS

Description	W.L.L. (lbs)	B.S. (lbs)
2" Winch Strap	3300	10000
3" Winch Strap	5000	15000
4" Winch Strap	5000	15000

Normal Lengths are 27 or 30 feet. Custom lengths available.
Most common end fittings are flat hooks and wire hooks.
Other end fittings available.
Further product information available upon request.



New York
Tel: 1-212-717-1496
Fax: 1-212-717-1499
<http://dragonsteelproducts.com>
E-mail: sales@dragonsteelproducts.com

Qingdao
Tel: 86-532-81970686
Fax: 86-532-81970685
E-mail: qingdao@dragonsteelproducts.com

Shanghai
Tel: 86-21-54810680
Fax: 86-21-54810003
E-mail: sho@dragonwirerope.com

PULLEYS AND BLOCKS

REGULAR WOOD BLOCK, SINGLE SHEAVE

Stock No.	Sheave Dia (in)	W.L.L. (lbs)	Rope Dia (in)	Weight (lbs)	End Fitting
RWB03HSS	3	500	3/8	0.99	Hook
RWB03SSS	3	500	3/8	1.00	Shackle
RWB04HSS	4	1000	1/2	1.76	Hook
RWB04SSS	4	1000	1/2	1.81	Shackle
RWB05HSS	5	1200	5/8	3.30	Hook
RWB05SSS	5	1200	5/8	3.35	Shackle
RWB06HSS	6	1800	3/4	5.02	Hook
RWB06SSS	6	2000	1	5.51	Shackle
RWB08HSS	8	2800	1	9.03	Hook
RWB08SSS	8	3000	1 1/4	12.00	Shackle
RWB10HSS	10	4000	1 1/8	15.97	Hook
RWB10SSS	10	5000	1 1/8	23.02	Shackle
RWB12HSS	12	5000	1 1/4	25.11	Hook
RWB12SSS	12	6800	1 1/4	31.06	Shackle
RWB14SSS	14	9600	1 3/4	52.86	Shackle
RWB16SSS	16	12000	2	68.06	Shackle

*Ultimate load is 4 times working load limit



REGULAR WOOD BLOCK, DOUBLE SHEAVE

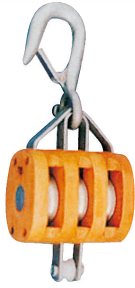
Stock No.	Sheave Dia (in)	W.L.L. (lbs)	Rope Dia (in)	Weight (lbs)	End Fitting
RWB03HDS	3	800	3/8	1.76	Hook
RWB03SDS	3	800	3/8	1.80	Shackle
RWB04HDS	4	1400	1/2	2.99	Hook
RWB04SDS	4	1400	1/2	3.06	Shackle
RWB05HDS	5	1800	5/8	4.75	Hook
RWB05SDS	5	1800	5/8	4.97	Shackle
RWB06HDS	6	2500	3/4	8.49	Hook
RWB06SDS	6	3300	1	8.70	Shackle
RWB08HDS	8	3800	1	13.97	Hook
RWB08SDS	8	5100	1	17.93	Shackle
RWB10HDS	10	6000	1 1/8	23.98	Hook
RWB10SDS	10	7700	1 1/8	33.00	Shackle
RWB12HDS	12	8000	1 1/4	39.16	Hook
RWB12SDS	12	10600	1 1/4	47.96	Shackle
RWB14SDS	14	15000	1 3/4	79.86	Shackle
RWB16SDS	16	19000	2	110.00	Shackle

*Ultimate load is 4 times working load limit



PULLEYS AND BLOCKS

REGULAR WOOD BLOCK, TRIPLE SHEAVE



Stock No.	Sheave Dia (in)	W.L.L. (lbs)	Rope Dia (in)	Weight (lbs)	End Fitting
RWB03HTS	3	1200	3/8	3.13	Hook
RWB03STS	3	1200	3/8	3.30	Shackle
RWB04HTS	4	1800	1/2	5.25	Hook
RWB04STS	4	1800	1/2	5.51	Shackle
RWB05HTS	5	2400	5/8	6.19	Hook
RWB05STS	5	2400	5/8	7.57	Shackle
RWB06HTS	6	3200	3/4	13.22	Hook
RWB06STS	6	3200	3/4	14.91	Shackle
RWB08HTS	8	4800	1	20.19	Hook
RWB08STS	8	4800	1	21.15	Shackle
RWB10HTS	10	8000	1 1/8	32.43	Hook
RWB10STS	10	8000	1 1/8	34.14	Shackle
RWB12HTS	12	10000	1 1/4	52.32	Hook
RWB12STS	12	10000	1 1/4	55.07	Shackle

*Ultimate load is 4 times working load limit



TRY NET BLOCK, HOT DIP GALVANIZED

Stock No.	Sheave Dia (in)	W.L.L. (tons)	Rope Dia (in)	Weight (lbs)
TNB06	6	5	1	23.13
TNB08	8	10	1 3/8	57.20

*Ultimate load is 4 times working load limit



TRAWL BLOCK, HOT DIP GALVANIZED

Stock No.	Sheave Dia (in)	W.L.L. (tons)	Rope Dia (in)	Weight (lbs)
TRB04	4	2	5/8	11.33
TRB06	6	5	1	22.72
TRB08	8	10	1 3/8	60.72
TRB12	12	10	1 7/8	82.72
TRB16	16	20	2	126.87
TRB22	22	30	3 1/2	308.00

*Ultimate load is 4 times working load limit



HAY FORK PULLEYS, ELECTRO GALVANIZED

Stock No.	Sheave Dia (in)	W.L.L. (tons)	Rope Dia (in)	Weight (lbs)
HFP04M	4	1	1 1/4MR	6.38
HFP04W	4	1	1/2 WR	6.29
HFP06M	6	2	1 1/2MR	14.63
HFP06W	6	2	5/8 WR	13.42

*Ultimate load is 4 times working load limit



New York
Tel: 1-212-717-1496
Fax: 1-212-717-1499
<http://dragonsteelproducts.com>
E-mail: sales@dragonsteelproducts.com

Qingdao
Tel: 86-532-81970686
Fax: 86-532-81970685
E-mail: qingdao@dragonsteelproducts.com

Shanghai
Tel: 86-21-54810680
Fax: 86-21-54810003
E-mail: sho@dragonwirerope.com

PULLEYS AND BLOCKS

SNATCH BLOCK WITH EYE, HOT DIP GALVANIZED

Stock No.	Sheave Dia (in)	W.L.L. (lbs)	Rope Dia (in)	Weight (lbs)
SB06EHG	6	2400	7/8	7.92
SB08EHG	8	4800	1 1/8	13.10
SB10EHG	10	6600	1 1/4	20.57
SB12EHG	12	9600	1 1/2	56.10

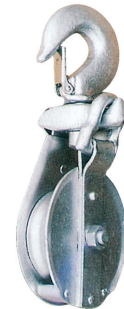
*Ultimate load is 4 times working load limit



SNATCH BLOCK WITH HOOK, HOT DIP GALVANIZED

Stock No.	Sheave Dia (in)	W.L.L. (lbs)	Rope Dia (in)	Weight (lbs)
SB06HHG	6	2400	7/8	8.25
SB08HHG	8	4800	1 1/8	14.30
SB10HHG	10	6600	1 1/4	27.0
SB12HHG	12	9600	1 1/2	57.20

*Ultimate load is 4 times working load limit



SNATCH BLOCK WITH SHACKLE

Stock No.	Sheave Dia (in)	W.L.L. (tons)	Rope Dia (in)	Weight (lbs)
SB03S	3	1.5	4-6	2.86
SB04S	4	3	6-9	4.85
SB05S	5	4.5	8-12	8.37
SB06S	6	6	10-14	17.84
SB08S	8	8	14-18	30.84

*Ultimate load is 4 times working load limit



SNATCH BLOCK WITH EYE

Stock No.	Sheave Dia (in)	W.L.L. (tons)	Rope Dia (in)	Weight (lbs)
SB03E	3	1.5	4-6	3.52
SB04E	4	3	6-9	6.04
SB05E	5	4.5	8-12	9.91
SB06E	6	6	10-14	19.60
SB08E	8	8	14-18	33.04

*Ultimate load is 4 times working load limit



PULLEYS AND BLOCKS

SINGLE SHEAVE PULLEY



Stock No.	Sheave Dia (in)	Rope Dia (in)	Weight (lbs)
PUL012S	1/2	5/32	0.05
PUL034S	3/4	3/16	0.10
PUL001S	1	1/4	0.12
PUL114S	1 1/4	5/16	0.19
PUL112S	1 1/2	5/16	0.32
PUL002S	2	7/16	0.57
PUL212S	2 1/2	1/2	0.98
PUL003S	3	5/8	1.38

*Ultimate load is 4 times working load limit

RIGGING BLOCK, ELECTRO GALVANIZED



Stock No.	Sheave Dia (in)	W.L.L. (tons)	Weight (lbs)
RB002	2	0.25	0.638
RB003	3	0.75	2.20
RB004	4	1	3.30
RB005	5	1.5	7.128

*Ultimate load is 4 times working load limit

LIGHT TYPE SNATCH BLOCK TAIL BOARD



Stock No.	Sheave Dia (in)	W.L.L. (tons)	Rope Dia (in)	Weight (lbs)
LSB0300TB	3	2	3/8	3.08
LSB0412TB	4 1/2	4	1/2	5.98
LSB0600TB	6	8	3/4	14.96
LSB0800TB	8	8	3/4	20.90
LSB1000TB	10	8	3/4	28.82
LSB1200TB	12	8	3/4	35.86

*Ultimate load is 4 times working load limit

LIGHT TYPE SNATCH BLOCK WITH HOOK



Stock No.	Sheave Dia (in)	W.L.L. (tons)	Rope Dia (in)	Weight (lbs)
LSB0300H	3	2	3/8	4.97
LSB0412H	4 1/2	4	1/2	12.67
LSB0600H	6	8	3/4	26.40
LSB0800H	8	8	3/4	34.76
LSB1000H	10	8	3/4	41.80
LSB1200H	12	8	3/4	48.40
LSB1400H	14	8	3/4	55.00
LSB1600H	16	15	7/8	129.80
LSB1800H	18	15	1	151.80

*Ultimate load is 4 times working load limit



New York
Tel: 1-212-717-1496
Fax: 1-212-717-1499

<http://dragonsteelproducts.com>

E-mail: sales@dragonsteelproducts.com

Qingdao

Tel: 86-532-81970686

Fax: 86-532-81970685

E-mail: qingdao@dragonsteelproducts.com

Shanghai

Tel: 86-21-54810680

Fax: 86-21-54810003

E-mail: sho@dragonwirerope.com

PULLEYS AND BLOCKS

LIGHT TYPE SNATCH BLOCK WITH SHACKLE

Stock No.	Sheave Dia (in)	W.L.L. (tons)	Rope Dia (in)	Weight (lbs)
LSB0300S	3	2	3/8	3.08
LSB0412S	4 1/2	4	1/2	13.77
LSB0600S	6	8	3/4	27.54
LSB0800S	8	8	3/4	35.86
LSB1000S	10	8	3/4	42.90
LSB1200S	12	8	3/4	49.57
LSB1400S	14	8	3/4	56.17
LSB1600S	16	15	7/8	136.40
LSB1800S	18	15	1	158.40

*Ultimate load is 4 times working load limit



HEAVY TYPE SNATCH BLOCK WITH HOOK

Stock No.	Sheave Dia (in)	W.L.L. (tons)	Rope Dia (in)	Weight (lbs)
HSB06H	6	12	7/8	48.4
HSB08H	8	15	7/8	61.6
HSB10H	10	15	7/8	76.3

*Ultimate load is 4 times working load limit



HEAVY TYPE SNATCH BLOCK WITH SHACKLE

Stock No.	Sheave Dia (in)	W.L.L. (tons)	Rope Dia (in)	Weight (lbs)
HSB06S	6	12	7/8	58.3
HSB08S	8	15	7/8	68.2
HSB10S	10	15	7/8	82.5

*Ultimate load is 4 times working load limit



HEAVY TYPE SNATCH BLOCK TAIL BOARD

Stock No.	Sheave Dia (in)	W.L.L. (tons)	Rope Dia (in)	Weight (lbs)
HSB06TB	6	12	7/8	29.1
HSB08TB	8	15	7/8	36.3
HSB10TB	10	15	7/8	50.9

*Ultimate load is 4 times working load limit



PULLEYS AND BLOCKS

SUPER TYPE SNATCH BLOCK WITH HOOK



Stock No.	Sheave Dia (in)	W.L.L. (tons)	Rope Dia (in)	Weight (lbs)
SSB08H	8	20	1 1/8	98.00
SSB10H	10	20	1 1/8	105.9
SSB12H	12	20	1 1/8	118.25
SSB14H	14	20	1 1/8	140.8

*Ultimate load is 4 times working load limit

SUPER TYPE SNATCH BLOCK WITH SHACKLE



Stock No.	Sheave Dia (in)	W.L.L. (tons)	Rope Dia (in)	Weight (lbs)
SSB08S	8	20	1 1/8	101.9
SSB10S	10	20	1 1/8	116.1
SSB12S	12	20	1 1/8	132
SSB14S	14	20	1 1/8	154.6

*Ultimate load is 4 times working load limit

SUPER TYPE SNATCH BLOCK TAIL BOARD



Stock No.	Sheave Dia (in)	W.L.L. (tons)	Rope Dia (in)	Weight (lbs)
SSB08TB	8	20	1 1/8	49.5
SSB10TB	10	20	1 1/8	65.45
SSB12TB	12	20	1 1/8	81.95
SSB14TB	14	20	1 1/8	103.03

*Ultimate load is 4 times working load limit

LIGHT TYPE SNATCH BLOCK DOUBLE SHEAVES WITH HOOK



Stock No.	Sheave Dia (in)	W.L.L. (tons)	Rope Dia (in)	Weight (lbs)
LSB0412HDS	4 1/2	4	1/2	22
LSB0600HDS	6	12	3/4	59.8
LSB0800HDS	8	12	3/4	70.8
LSB1000HDS	10	12	3/4	86.9
LSB1200HDS	12	12	3/4	110
LSB1400HDS	14	12	3/4	122.7

*Ultimate load is 4 times working load limit



New York
Tel: 1-212-717-1496
Fax: 1-212-717-1499
<http://dragonsteelproducts.com>
E-mail: sales@dragonsteelproducts.com

Qingdao
Tel: 86-532-81970686
Fax: 86-532-81970685
E-mail: qingdao@dragonsteelproducts.com

Shanghai
Tel: 86-21-54810680
Fax: 86-21-54810003
E-mail: sho@dragonwirerope.com

PULLEYS AND BLOCKS

LIGHT TYPE SNATCH BLOCK DOUBLE SHEAVES WITH SHACKLE

Stock No.	Sheave Dia (in)	W.L.L. (tons)	Rope Dia (in)	Weight (lbs)
LSB0412SDS	4 1/2	4	1/2	22.0
LSB0600SDS	6	12	3/4	60.5
LSB0800SDS	8	12	3/4	71.5
LSB1000SDS	10	12	3/4	88.0
LSB1200SDS	12	12	3/4	111.1
LSB1400SDS	14	12	3/4	123.8

*Ultimate load is 4 times working load limit



GIN BLOCK

Stock No.	Sheave Dia (in)	Rope Dia (in)	Weight (lbs)
GB10H	10	1	10.56
GB12H	12	1	14.85
GB14H	14	1	18.10



SS SWIVEL BLOCK WITH SQUARE HEAD, SINGLE SHEAVE

Stock No.	Dia Of Sheave (mm)	Thickness Of Sheave (mm)	W.L.L. (lbs)	Weight (lbs)
SBSH0050SSS	50	21	1000	0.90
SBSH0075SSS	75	21	1450	1.95
SBSH0100SSS	100	26	2000	3.55
SBSH100ASSS	100A	34	2000	3.75



SS SWIVEL BLOCK WITH ROUND HEAD, SINGLE SHEAVE

Stock No.	Dia Of Sheave (mm)	Thickness Of Sheave (mm)	W.L.L. (lbs)	Weight (lbs)
SBRH025SSS	25	16	550	0.28
SBRH032SSS	32	16	600	0.41
SBRH050SSS	50	21	1000	0.83



SS SWIVEL BLOCK WITH ROUND HEAD, DOUBLE SHEAVE

Stock No.	Dia Of Sheave (mm)	Thickness Of Sheave (mm)	W.L.L. (lbs)	Weight (lbs)
SBRH025DSS	25	16	550	0.43
SBRH032DSS	32	16	600	0.63
SBRH050DSS	50	21	1000	1.28



CHAIN BLOCKS

HSZ-A619 SERIES CHAIN BLOCK



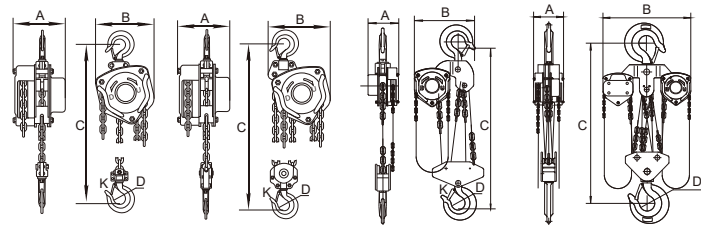
SUPER QUALITY

One of the best sellers.

Capacity ranges from 0.5t to 20t.

Heavy duty of 30t, 50t is available.

Other colors available.



0.5T-2T

3T,5T

10T

20T

Stock No.	Capacity (tons)	Standard (m)	Running Test Load (KN)	Effort Required To Lift Rated Load (N)	Strands Of Load Chain	Diameter Of Load Chain (mm)	Dimensions (mm)					Net Weight (kgs)	Extra Weight Per Meter Of Extra Lift (kgs)
							A	B	C	D	K		
HSZ-A619-0.5	0.5	2.5	7.5	231	1	6	131	127	270	35.0	30	10	1.8
HSZ-A619-1	1.0	2.5	15.0	309	1	6	140	158	317	35.5	28	12	1.8
HSZ-A619-1.5	1.5	2.5	22.5	320	1	8	161	174	399	45.0	36	19	2.4
HSZ-A619-2	2.0	3.0	30.0	360	1	8	161	187	414	42.5	33.5	20	2.4
HSZ-A619-3	3.0	3.0	45.0	340	2	8	161	199	465	50.0	40	27	3.8
HSZ-A619-5	5.0	3.0	62.5	414	2	10	186	253	636	64.0	50	45.5	5.4
HSZ-A619-10	10	3.0	125	414	4	10	207	398	798	85.0	64	83	9.8
HSZ-A619-20	20	3.0	250	414x2	8	10	215	650	890	110	85	193	19.6



New York
Tel: 1-212-717-1496
Fax: 1-212-717-1499
<http://dragonsteelproducts.com>
E-mail: sales@dragonsteelproducts.com

Qingdao
Tel: 86-532-81970686
Fax: 86-532-81970685
E-mail: qingdao@dragonsteelproducts.com

Shanghai
Tel: 86-21-54810680
Fax: 86-21-54810003
E-mail: sho@dragonwirerope.com

CHAIN BLOCKS

OTHER MODELS OF CHAIN BLOCKS

Detailed specification available upon request.



HSZ-B SERIES



HSZ-A622 SERIES



HSZ-A600 SERIES (LIGHT DUTY)



360* CHAIN BLOCK

New York
Tel: 1-212-717-1496
Fax: 1-212-717-1499
<http://dragonsteelproducts.com>
E-mail: sales@dragonsteelproducts.com

Qingdao
Tel: 86-532-81970686
Fax: 86-532-81970685
E-mail: qingdao@dragonsteelproducts.com

Shanghai
Tel: 86-21-54810680
Fax: 86-21-54810003
E-mail: sho@dragonwirerope.com



LEVER BLOCKS

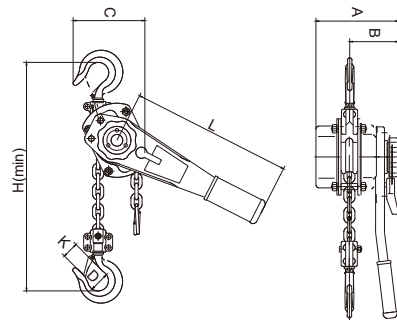
HSH-A616 SERIES LEVER BLOCK



SUPER QUALITY

One of the best sellers.

Heavy duty though light weight.



Stock No.	Capacity (tons)	Standard Lift (m)	Running Test Load (KN)	Effort Required To Lift Rated Load (N)	Strands Of Load Chain	Diameter Of Load Chain (mm)	Dimensions (mm)							Net Weight (kgs)	Extra Weight Per Meter Of Extra Lift (kgs)
							A	B	C	D	H	L	K		
HSH-A616-0.75	0.75	1.5	12	140	1	6	145	86	122	37	320	280	30	7.5	0.8
HSH-A616-1.5	1.5	1.5	24	220	1	8	175	100	130	45	380	410	36	11.5	1.4
HSH-A616-3	3	1.5	45	320	1	10	203	118	150	50	480	410	40	21	2.2
HSH-A616-6	6	1.5	94.5	340	2	10	203	118	205	64	620	410	50	31.5	4.4
HSH-A616-9	9	1.5	118.8	360	3	10	203	118	316	85	700	410	58	47	6.6



New York
Tel: 1-212-717-1496
Fax: 1-212-717-1499
<http://dragonsteelproducts.com>
E-mail: sales@dragonsteelproducts.com

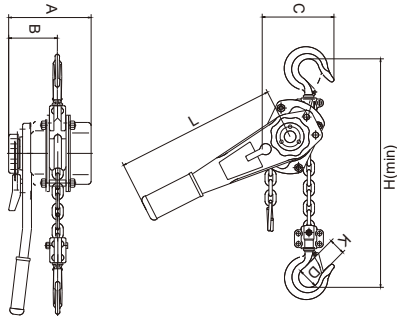
Qingdao
Tel: 86-532-81970686
Fax: 86-532-81970685
E-mail: qingdao@dragonsteelproducts.com

Shanghai
Tel: 86-21-54810680
Fax: 86-21-54810003
E-mail: sho@dragonwirerope.com

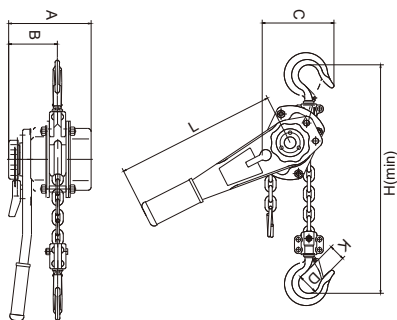
LEVER BLOCKS

OTHER MODELS OF LEVER BLOCKS

Detailed specification available upon request.



HSH-A622 SERIES



HSH-A620 SERIES

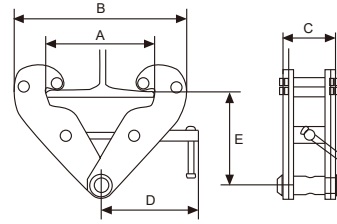
New York
Tel: 1-212-717-1496
Fax: 1-212-717-1499
<http://dragonsteelproducts.com>
E-mail: sales@dragonsteelproducts.com

Qingdao
Tel: 86-532-81970686
Fax: 86-532-81970685
E-mail: qingdao@dragonsteelproducts.com

Shanghai
Tel: 86-21-54810680
Fax: 86-21-54810003
E-mail: sho@dragonwirepe.com

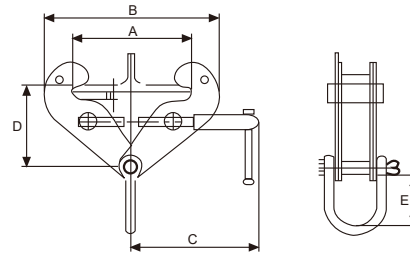


JG SERIES BEAM CLAMP



Stock No.	Capacity (kgs)	Adjustable beam width (mm)	Dimensions (mm)							Weight (kgs)	
			A		B		C	D	E		
			max	min	max	min			max		
JG-1	1000	75-230	278	183	380	64	217	150	90	3.5	
JG-2	2000	75-230	278	183	380	76	217	150	90	4.5	
JG-3	3000	80-320	356	220	500	100	277	220	145	9.5	
JG-5	5000	90-320	356	220	500	112	277	220	145	11.0	
JG-10	10000	90-320	356	250	500	120	285	230	160	16.0	

JBC SERIES BEAM CLAMP



Stock No.	Capacity (kgs)	Adjustable beam width (mm)	Dimensions (mm)							Weight (kgs)	
			A		B		C	D			E
			max	min	max	min		max			
JBC-1A	1000	75-230	284	180	375	220	102	160	29	4	
JBC-2A	2000	75-230	284	180	375	220	102	160	28	5	
JBC-3A	3000	80-320	365	220	498	271	168	240	60	9	
JBC-5A	5000	90-320	365	220	498	271	168	240	57	11	
JBC-10A	10000	90-320	356	250	514	280	172	240	55	18	



New York
Tel: 1-212-717-1496
Fax: 1-212-717-1499
<http://dragonsteelproducts.com>
E-mail: sales@dragonsteelproducts.com

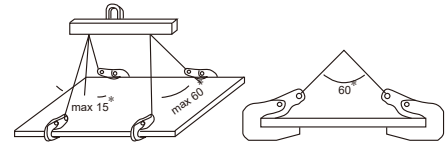
Qingdao
Tel: 86-532-81970686
Fax: 86-532-81970685
E-mail: qingdao@dragonsteelproducts.com

Shanghai
Tel: 86-21-54810680
Fax: 86-21-54810003
E-mail: sho@dragonwirerope.com

CLAMPS

JPD SERIES HORIZONTAL LIFTER (FORGED)

Stock No.	Capacity/pair (kgs)	Test Load (kgs)	Opening Size (mm)	Net Weight (kgs)
JPD-1.0	1000	2000	3-18	2.0
JPD-2.0	2000	4000	3-22	4.4
JPD-3.0	3000	6000	12-35	8.9



OTHER MODELS

Detailed specification available upon request.



YDG Series
Horizontal Lifter



LA Series
Horizontal Lifter



DFM Series
Turning Lifter (Forged)



PPD Series
Horizontal Lifter

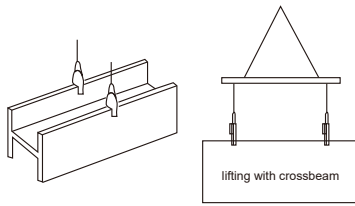


Concrete Pipe
Lifting Clamp



Multi Steel Plate
Lifting Clamp





JCD VERTICAL LIFTING CLAMP (DSQH MODEL)

Stock No.	Capacity/pair (kgs)	Test Load (kgs)	Opening Size (mm)	Net Weight (kgs)
JCD-0.8	800	1600	0-16	2.8
JCD-1.0	1000	2000	0-20	5.5
JCD-2.0	2000	4000	0-25	6.0
JCD-3.2	3200	6400	0-35	10.0
JCD-5.0	5000	10000	0-50	18.0
JCD-8.0	8000	16000	0-60	26.0
JCD-10	10000	15000	0-80	35.0
JCD-12	12000	18000	20-90	48.0
JCD-16	16000	24000	40-100	69.5
JCD-20	20000	30000	60-120	87.0



OTHER MODELS

Detailed specification available upon request.



ECD Vertical Lifting Clamp



YQC Jerrican Clamp



PQC Clamp for Plastic Drum



CDK Vertical Lifting Clamp



CDD Vertical Lifting Clamp



New York
Tel: 1-212-717-1496
Fax: 1-212-717-1499
<http://dragonsteelproducts.com>
E-mail: sales@dragonsteelproducts.com

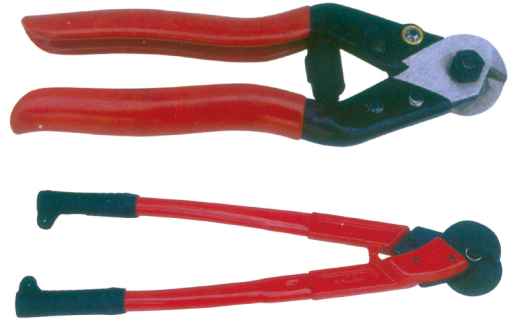
Qingdao
Tel: 86-532-81970686
Fax: 86-532-81970685
E-mail: qingdao@dragonsteelproducts.com

Shanghai
Tel: 86-21-54810680
Fax: 86-21-54810003
E-mail: sho@dragonwirerope.com

CUTTING, BENDING*SWAGING TOOLS

WIRE ROPE CUTTER

Length	Max. Cable Diameter	kg/pc
8"	3/16" (5mm)	0.25
18"	1/2" (12mm)	1.80
24"	5/8" (16mm)	3.00
36"	3/4" (20mm)	6.00
42"	7/8" (24mm)	8.25



JAPANESE TYPE

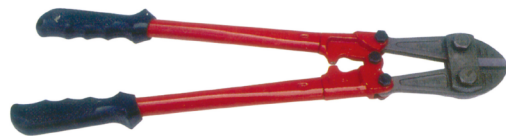
Length	Max. Cable Diameter	kg/pc
18"	1/2" (12mm)	1.70
32"	5/8" (16mm)	4.00



BOLT CUTTER

GGG-C-740d, Type II, Class 3*4 Standard
Maximum hardness of bolt: HRC40

Length	Max. Cable Diameter	kg/pc
Soft Material		
12"	3/16" (5mm)	0.85
14"	1/4" (7mm)	1.00
18"	5/16" (8mm)	1.80
24"	3/8" (10mm)	2.75
30"	1/2" (13mm)	4.40
36"	5/8" (16mm)	6.00
42"	3/4" (19mm)	9.75
Medium Material		
12"	5/32" (4mm)	0.85
14"	3/16" (5mm)	1.00
18"	1/4" (6mm)	1.80
24"	5/16" (8mm)	2.75
30"	3/8" (10mm)	4.40
36"	1/2" (12mm)	6.00
42"	7/16" (14mm)	9.75



New York
Tel: 1-212-717-1496
Fax: 1-212-717-1499
<http://dragonsteelproducts.com>
E-mail: sales@dragonsteelproducts.com

Qingdao
Tel: 86-532-81970686
Fax: 86-532-81970685
E-mail: qingdao@dragonsteelproducts.com

Shanghai
Tel: 86-21-54810680
Fax: 86-21-54810003
E-mail: sho@dragonwirerope.com



CUTTING, BENDING*SWAGING TOOLS

MINI SWAGING TOOL



Length	Max. Sleeve Size	kg/pc
8"	1/8" (3mm)	0.25
11"	1/8" (3mm)	0.40

MULTI-FUNCTION SWAGING TOOL

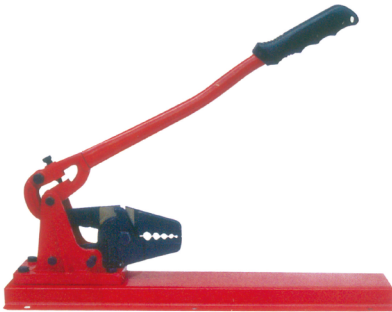
For swaging 1/16" -3/16" aluminum sleeves, cutting 3/16" and below cables.



Length	Max. Sleeve Size	kg/pc
24"	1/16"(6mm)	3.00

MULTI-FUNCTION SWAGING TOOL, BENCH TYPE

For swaging 1/16"-3/16" aluminum sleeves.



Length	Max. Sleeve Size	kg/pc
24"	3/16"(6mm)	3.00

30" SWAGING TOOL

For swaging 5/32", 1/4" and 5/16" aluminum sleeves.

36" SWAGING TOOL

For swaging 3/8", aluminum sleeves.



New York
Tel: 1-212-717-1496
Fax: 1-212-717-1499
<http://dragonsteelproducts.com>
E-mail:sales@dragonsteelproducts.com

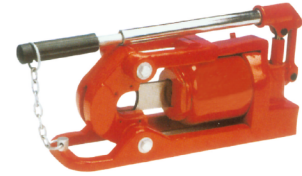
Qingdao
Tel: 86-532-81970686
Fax: 86-532-81970685
E-mail:qingdao@dragonsteelproducts.com

Shanghai
Tel: 86-21-54810680
Fax: 86-21-54810003
E-mail:sho@dragonwirerope.com

CUTTING, BENDING*SWAGING TOOLS

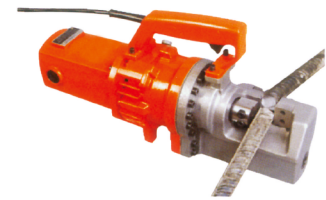
WIRE ROPE CUTTER

Stock No.	Cutting Range (mm)	Blade Travel (mm)	Net Weight (kgs)	Max. Overall size (mm)
B30	8-30	30	18.5	440x130x190
C40	8-40	63	34.0	510x155x215
D50	8-50	63	34.0	510x155x215



REINFORCING STEEL BAR CUTTER

Cutting Range			Power Supply	Weight (kgs)
SD345 Deformed Reinforcing Bar (Dia.mm)	PC Reinforcing Steel Bar (Dia.mm)	Spring Steel (Dia.mm)		
16	14	11	220V 50Hz	12
19	17	12		14
22	19	14		15
25	22	16		21

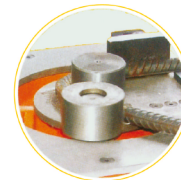


110V,60HZ is available.

Portable design for convenient operation.

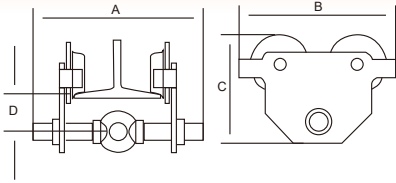
STEEL BAR BENDER

Stock No.	Bending Range	Net Weight (kgs)
RB-25	6-25mm(bar dia.)	91



PLAIN TROLLEYS

GCT 616 SERIES PLAIN TROLLEY



Capacity	I-beam Width	Weight (kgs)	Dimensions (mm)			
			A	B	C	D
0.5t	68-126	5.0	208	186	200	150
1.0t	80-146	7.8	242	225	253	170
2.0t	80-168	10.2	280	260	310	180
3.0t	88-168	22.8	300	300	357	190
5.0t	100-180	34.5	316	353	400	210
10.0t	122-203	75.6	343	470	520	220

OTHER MODELS

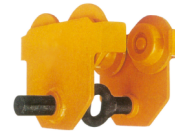
Detailed specification available upon request.



GCT 610 Series



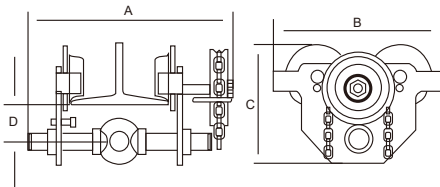
GCT 619 Series



GCT 620 Series

GEARED TROLLEYS

GCL 616 SERIES GEARED TROLLEY



Capacity	I-beam Width	Weight (kgs)	Dimensions (mm)			
			A	B	C	D
0.5t	68-126	8.0	283	186	200	150
1.0t	80-146	11.8	317	225	253	170
2.0t	80-168	14.5	360	260	310	180
3.0t	88-168	27.6	380	300	357	180
5.0t	100-180	40.2	400	353	400	210
10t	122-203	81.0	443	470	520	220
20t	122-203	220.0	465	630	568	290

OTHER MODELS

Detailed specification available upon request.



GCL 610 Series



GCL 619 Series



GCL 620 Series



New York
Tel: 1-212-717-1496
Fax: 1-212-717-1499
<http://dragonsteelproducts.com>
E-mail: sales@dragonsteelproducts.com

Qingdao
Tel: 86-532-81970686
Fax: 86-532-81970685
E-mail: qingdao@dragonsteelproducts.com

Shanghai
Tel: 86-21-54810680
Fax: 86-21-54810003
E-mail: sho@dragonwirerope.com

PALLET TRUCKS

CBY-11A HYDRAULIC HAND PALLET TRUCK

Stock No.		CBY-IIA
Capacity	kg	2000/2500
Fork Width	mm	550 684
Fork Length	mm	1100 1220
Lowered Height	mm	85/75
Max. Fork Height	mm	195/185
Max. Lifting Height	mm	*110
Format of Front Wheel		Single/Double
Material Of Wheel		Nylon/Rubber/Polyurethane
Truck Weight	kg	80-85
Packing Qty (20'container)	pcs	180 144



OTHER MODELS

Detailed specification available upon request.



Stock No.: CBY-I
Capacity: 1000kgs



Stock No.: SL-4000/5000
Capacity: 4000/5000kgs

More models are available.

Detailed specification will be provided upon request.

New York

Tel: 1-212-717-1496

Fax: 1-212-717-1499

<http://dragonsteelproducts.com>

E-mail: sales@dragonsteelproducts.com

Qingdao

Tel: 86-532-81970686

Fax: 86-532-81970685

E-mail: qingdao@dragonsteelproducts.com

Shanghai

Tel: 86-21-54810680

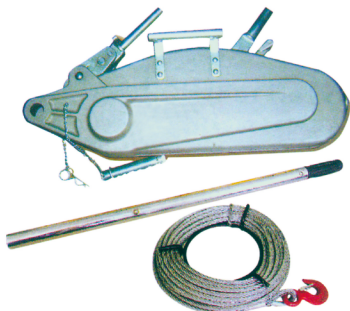
Fax: 86-21-54810003

E-mail: sho@dragonwirerope.com



WIRE ROPE WINCHES

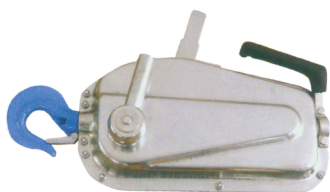
HEAVY DUTY WIRE ROPE WINCH



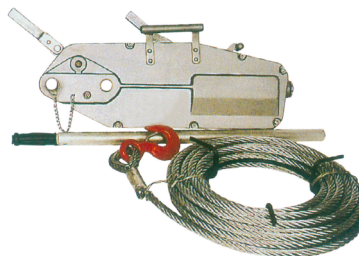
Stock No.	Rated Capacity (tons)	Rope Length (m)
ST0.8	0.8	20
ST1.6	1.6	20
ST3.2	3.2	20
ST5.4	5.4	20

OTHER MODELS

Detailed specification available upon request.



HSS Series



ZNL Series



ZNL Series(Iron Housing)

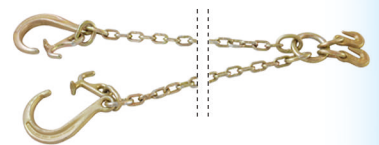
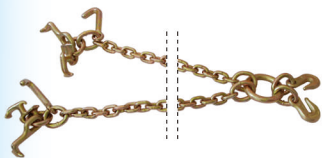


New York
Tel: 1-212-717-1496
Fax: 1-212-717-1499
<http://dragonsteelproducts.com>
E-mail: sales@dragonsteelproducts.com

Qingdao
Tel: 86-532-81970686
Fax: 86-532-81970685
E-mail: qingdao@dragonsteelproducts.com

Shanghai
Tel: 86-21-54810680
Fax: 86-21-54810003
E-mail: sho@dragonwirerope.com

CHAIN ASSEMBLIES



Specifications available upon request.